



St. Marys Road, NW10

£1,895 Per week

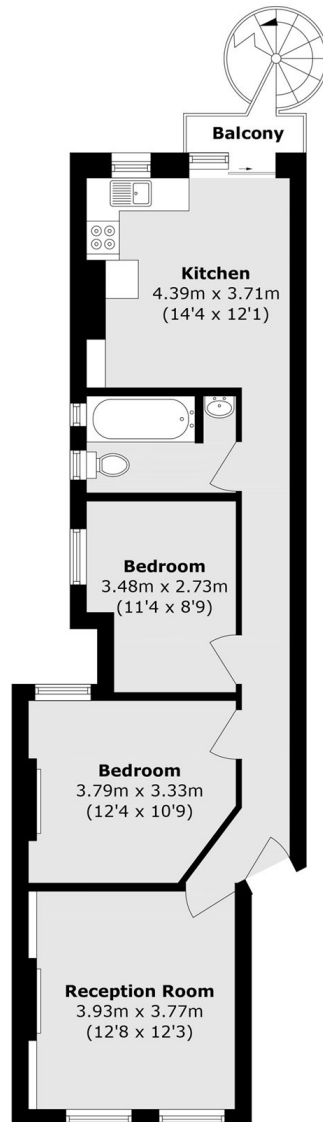
Set within a charming Victorian mansion block, this second-floor flat offers two well-proportioned double bedrooms, a bright south-facing reception room overlooking the front of the building, and a generous eat-in kitchen to the rear. The property benefits from access to a communal garden and excellent built-in storage throughout.

St. Mary's Road is a quiet residential street conveniently positioned for the shops, cafés and local amenities of Harlesden, as well as the green open spaces of Roundwood Park. Excellent transport links are close by, including Harlesden and Willesden Junction stations (Bakerloo Line & Overground), providing quick and reliable connections across London.

Features

- Two Double Bedrooms
- Separate Eat-In Kitchen
- South Facing Reception
- Communal Garden
- Modern Interior
- Close To Roundwood Park

St. Marys Road, London, NW10



Total area (approx.): 65.8 sq. m (708.3 sq. ft)
Balcony area (approx.): 1.4 sq. m (15.0 sq. ft)