



Southwold Mansions

Widley Road, W9

Asking Price £750,000

Positioned on the garden level of this popular purpose-built mansion flat is this three bedroom apartment spanning approximately 840 square feet offering direct access onto communal gardens.

Apartments of this configuration and size are rare within the block. The accommodation comprises, a charming reception room to the front, separate fully fitted kitchen, master bedroom with plentiful storage, a large second bedroom, and a third double bedroom. All are served by a family bathroom.

Southwold Mansions is situated close to all the local amenities offered by this fashionable area, including boutiques shops, cafes on Elgin Avenue (approx. 0.3 Miles) Paddington Recreation Ground with an outstanding Children's play area, tennis courts, running track and the underground (approx. 0.3 miles) at Maida Vale (Bakerloo Line).

CHESTERTONS



Southwold Mansions

Widley Road, W9

- A charming 3 bedroom apartment spanning approx. 840 square feet.
- Benefitting from a share in the freehold and exceptionally long underlying lease.
- The apartment has direct access onto communal gardens.
- Southwold Mansions is positioned within close proximity of transport links and the greenery of Paddington Recreation Ground.



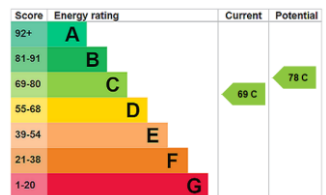
Tenure: Share of Freehold 976 years 7 months

Service Charge: £4,771.08 pa

Ground Rent: £0

Local Authority: City of Westminster

Council Tax Band: D



Chestertons Little Venice Sales

26 Clifton Road

Maida Vale

London

W9 1SX

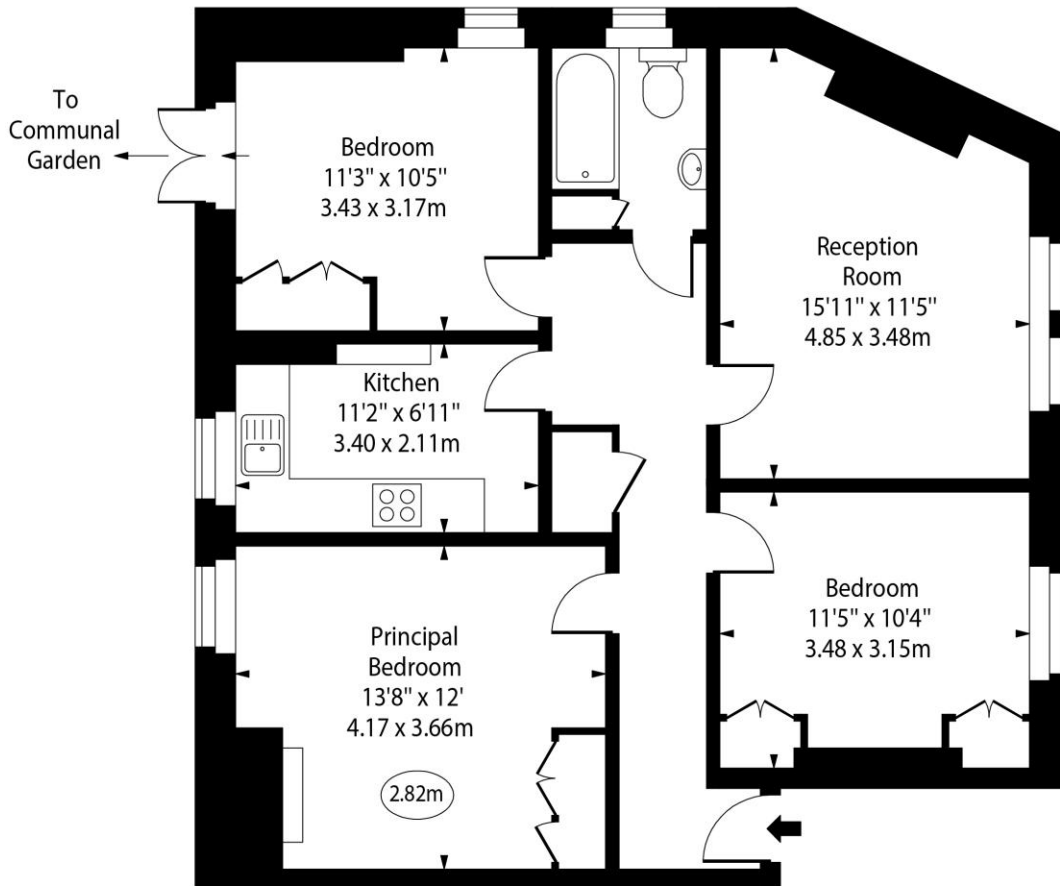
littlevenice@chestertons.co.uk

020 7286 4632

chestertons.co.uk

Southwold Mansions,
Widley Road, W9

○ - Ceiling Height



Lower Ground Floor

Approx Gross Internal Area 837 Sq Ft - 77.76 Sq M

Every attempt has been made to ensure the accuracy of the floor plan shown. However, all measurements, fixtures, fittings, and data shown are approximate interpretations and for illustrative purposes only. Measured according to the RICS. Not To Scale.

www.goldlens.co.uk
Ref. No. 031431E

