



19 Furzehatt Avenue, Plymstock, Plymouth, Devon, PL9 8LJ

# Price £495,000



Situated within the highly sought-after Fletcher Estate in the heart of Plymstock, this beautifully presented and recently refurbished three-bedroom detached bungalow is offered to the market with no onward chain, providing a fantastic opportunity for buyers seeking a home that is ready to move straight into.

Finished to an excellent standard throughout, the accommodation comprises a welcoming and generously proportioned lounge featuring a large picture window and patio doors that overlook and provide access to the private south-facing rear garden, creating a bright and inviting living space.

The recently installed contemporary kitchen/dining room has been thoughtfully designed with a stylish range of fitted units and work surfaces, incorporating a built-in hob and oven, integrated fridge freezer, and plumbing and space for a washing machine. The dining area provides ample space for family meals and entertaining.

There are three well-proportioned bedrooms, all served by a modern family bathroom fitted with a contemporary suite, together with a separate WC for added convenience.

Externally, the property continues to impress. To the front, a driveway provides off-road parking and access to the garage, while a lawned garden with mature hedging offers an attractive degree of privacy. To the rear, the enclosed south-facing garden enjoys a sunny aspect and is predominantly laid to lawn, complemented by a patio seating area that is ideal for outdoor dining and relaxation.

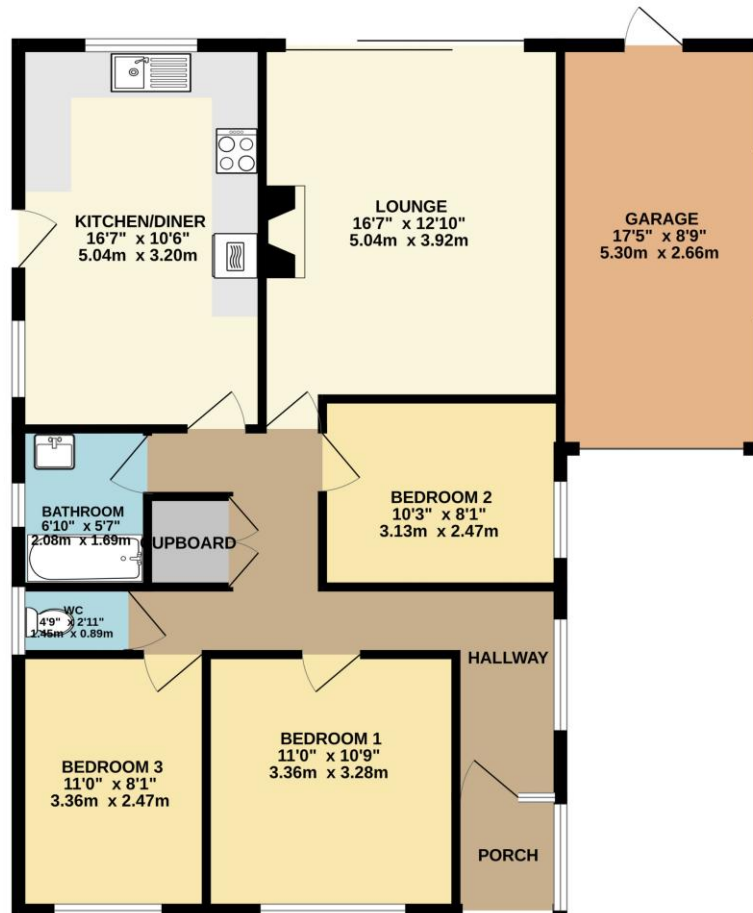
Located in one of Plymstock's most popular residential areas, Furzehatt Avenue is conveniently positioned close to a wide range of local amenities. The Broadway Shopping Centre offers an excellent selection of shops, cafés, supermarkets and everyday services, while well-regarded primary and secondary schools are within easy reach. Regular public transport links provide access to Plymouth city centre, and the beautiful South Hams coastline, nearby parks, and scenic waterfront walks at Mount Batten and Jennycliff are all just a short drive away.

Combining modern accommodation, a desirable location, and beautifully presented gardens, this exceptional detached bungalow must be viewed to be fully appreciated.



To view this property call Lang Town & Country Estate Agents on **01752 456000**.





TOTAL FLOOR AREA: 1023 sq.ft. (95.1 sq.m.) approx.  
 Measurements are approximate. Not to scale. Illustrative purposes only.  
 Made with Metropix ©2026



Lang Town & Country

6 The Broadway

Plymstock

Plymouth

PL9 7AU

Tel: 01752 456000

Email: [plymstockoffice@langtownandcountry.com](mailto:plymstockoffice@langtownandcountry.com)

Lang Town & Country endeavour to ensure the accuracy of property details produced and displayed, we have not tested any apparatus, equipment, fixtures, fittings or services and so cannot verify that they are connected, in working order or fit for purpose. A buyer must check the availability of any property and make an appointment to view before embarking on any journey to see a property.

