



- Link-Detached
- 3 Bedrooms
- 20'5" Lounge Diner
- Generous Rear Garden & Garage
- Full Renovation Required
- Popular Village Location
- NO ONWARD CHAIN
- Call Today To View!

Willowfield Avenue, Nettleham, LN2 2TH
£245,000





Offered for sale with no onward chain, this 3 bedroom link-detached 1970s property presents an excellent renovation opportunity, located in the sought-after village of Nettleham. The accommodation briefly comprises a welcoming entrance hall, a spacious 20'5" lounge/diner, and a kitchen. To the first floor, there are two double bedrooms, a single bedroom measuring 6'5" x 8'10", and a family bathroom. Externally, the property enjoys a generous rear garden, currently in an overgrown state and requiring landscaping, along with driveway parking for one vehicle and access to a single garage. Nettleham is a highly regarded village offering an excellent range of local amenities including a doctor's surgery, public house, Co-op food store, independent retailers, a primary school, and a regular bus service to and from Lincoln city centre. For further information or to arrange a viewing, please contact Starkey & Brown. Council Tax Band: B. Freehold.



Entrance Hall

Front door entry to the front aspect, uPVC double-glazed window to the front aspect, and an airing cupboard housing a hot water cylinder.

Downstairs WC

Low-level WC and a uPVC double-glazed window to the side aspect, stairs rising to the first floor, understairs storage cupboard housing the utility meters.

Lounge Diner

20' 5" x 10' 11" (6.22m x 3.32m)

Sliding uPVC doors to the rear aspect, uPVC double-glazed window to the front aspect, and a radiator.

Kitchen

10' 6" x 8' 10" (3.20m x 2.69m)

Range of base and eye level units and counter worktops, space and plumbing for appliances, uPVC double-glazed window to the rear aspect, a radiator, and an external door leading onto the passageway giving access to the rear garden.

First Floor Landing

uPVC double-glazed window to the front aspect, access to bedrooms and bathroom.

Master Bedroom

10' 1" x 10' 4" (3.07m x 3.15m)

uPVC double-glazed window to the front aspect and a radiator.

Bedroom 2

9' 7" x 11' 0" max (2.92m x 3.35m)

uPVC double-glazed window to the rear aspect and a radiator.

Bedroom 3

6' 5" x 8' 10" (1.95m x 2.69m)

uPVC double-glazed window to the rear aspect and a radiator.

Bathroom

6' 10" x 5' 6" (2.08m x 1.68m)

Three-piece suite comprising a panelled bath, a low-level WC, a pedestal hand wash basin unit, a radiator, and a uPVC double-glazed obscured window to the side aspect.

Outside Rear

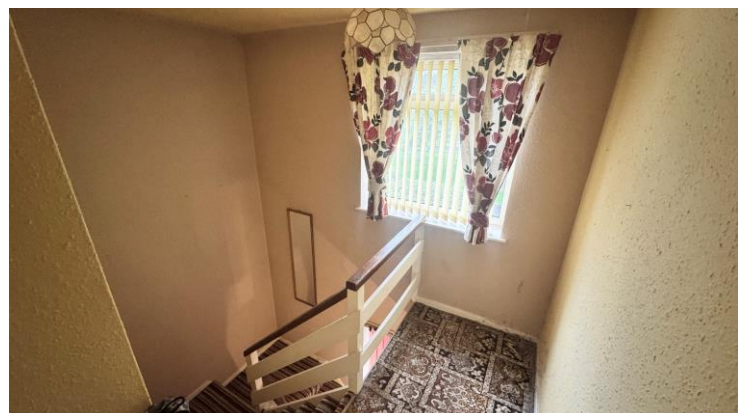
The garden is currently in an overgrown condition. Having a generously sized plot and in need of landscaping. External access from the rear to the front of the property.

Outside Front

Lawned front garden with driveway parking for a minimum of 1 vehicle. Access to:

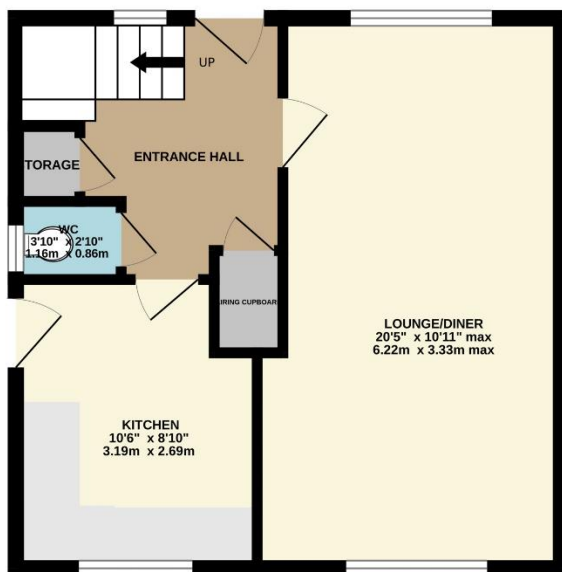
Single Garage

Having an up-and-over door and lighting.

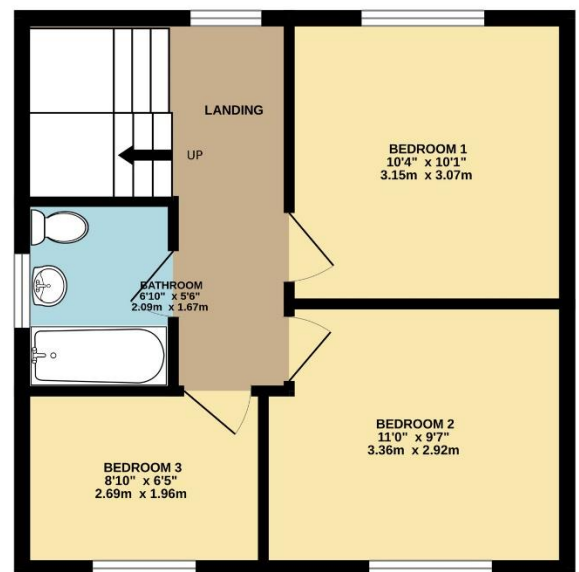




GROUND FLOOR
394 sq.ft. (36.6 sq.m.) approx.



FIRST FLOOR
394 sq.ft. (36.6 sq.m.) approx.



TOTAL FLOOR AREA : 788 sq.ft. (73.2 sq.m.) approx.

Whilst every attempt has been made to ensure the accuracy of the floorplan contained here, measurements of doors, windows, rooms and any other items are approximate and no responsibility is taken for any error, omission or mis-statement. This plan is for illustrative purposes only and should be used as such by any prospective purchaser. The services, systems and appliances shown have not been tested and no guarantee as to their operability or efficiency can be given.
Made with Metropix ©2025

In order that we can assist you with your move as smoothly and efficiently as possible, our preferred Mortgage Adviser, can offer you advice on all your mortgage and protection needs, tailored to your individual circumstances. It will also be part of our qualifying process that you speak with our Mortgage Adviser when we ask the vendor to consider your offer. Your details may be passed onto third parties, please advise us if you do not wish this to happen.

Money Laundering regulations 2003: It is a mandatory requirement that all purchasers and sellers produce identification documentation before we can proceed with any sale. We thank you for your co-operation. Services: We regret that none of the services, equipment or appliances at the property have been tested by ourselves and therefore we cannot guarantee their working order or condition. Potential purchasers are strongly advised to carry out their own tests or enquiries before finalising their purchase. These particulars are issued as a general guide and do not form part of any contract nor do they at any stage represent factual information. Starkey & Brown trading as Starkey & Brown Ltd, 34 Silver Street, Lincoln, LN2 1EH. Company Registration Number 6081031

The information is provided and maintained by Starkey & Brown Estate Agents, Lincoln. Please contact selling agent or developer directly to obtain any information which may be available under the terms of the Energy Performance and Buildings (Certificates & Inspections) (England & Wales) Regulations 2007 and the Home Information Pack Regulations 2007.

Important Information:

All measurements are approximate. We have not tested any appliances or services within this property and cannot verify them to be in working order or within the vendors/s ownership. We have not verified the tenure of the property, type of construction or the condition thereof. Intending purchasers should make appropriate enquiries through their own solicitors and surveyor etc, prior to exchange of contract.

34 Silver Street, Lincoln, Lincolnshire, LN2 1EH
T: 01522 845845
E: lincoln@starkeyandbrown.co.uk



www.starkeyandbrown.co.uk

