



Tite Street
London, SW3

CHESTERTONS





This bright and spacious duplex occupies the third and fourth floors of a charming end-of-terrace red brick conversion in the heart of Chelsea.

- Direct Lift Access
- 2 Bedrooms
- 2 Bathrooms
- Separate Kitchen
- Terrace

£5,000 pcm

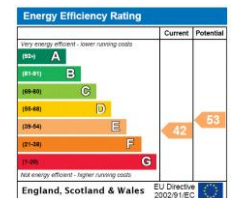
Additional tenant charges apply (fees apply to non-AST tenancies only)

Tenancy Agreement Fee: £300

References per Tenant/Guarantor: £60

Inventory check (approx. £100 – £250 inc. VAT)

chestertons.co.uk/property-to-rent/applicable-fees



Minimum Term: 12 months
Deposit Required: £5,769.23
Local Authority: Kensington and Chelsea
Council Tax Band: G
EPC Rating: E
Furnished

Chestertons Chelsea Lettings

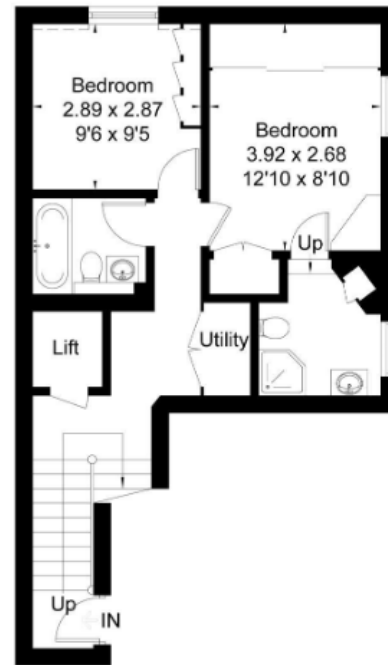
17 Cale Street
 London
 SW3 3QR

chelsealettingsusers@chestertons.co.uk

02075944750

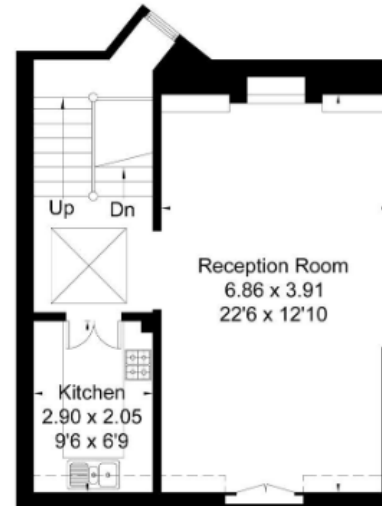
chestertons.co.uk

Approximate Area = 88.9 sq m / 957 sq ft
Including Limited Use Area (1.6 sq m / 17 sq ft)



Third Floor

Area = 44.8 sq m / 482 sq ft
(Limited Use Area = 0.2 sq m / 2 sq ft)



Fourth Floor

Area = 44.1 sq m / 475 sq ft
(Limited Use Area = 1.4 sq m / 15 sq ft)

Surveyed and drawn in accordance with the International Property Measurement Standards (IPMS 2: Residential)
fourwalls-group.com 232813

Chesterton UK Services Limited trading as Chestertons for themselves and for the vendor of this property whose agents they are, give notice that (i) these particulars do not constitute any part of an offer or contract, (ii) all statements contained within these particulars are made without responsibility on the part of Chestertons or the vendor, (iii) whilst made in good faith, none of the statements contained within these particulars are to be relied upon as a statement or representation of fact, (iv) any intending purchasers must satisfy themselves by inspection or otherwise as to the correctness of each of the statements contained within these particulars, (v) the vendor does not make or give either Chestertons or any person in their employment any authority to make or give representation or warranty whatsoever in relation to this property. Wide angle lenses may be used. ©Copyright Chestertons | Chesterton Global Ltd | Registered Office 40 Connaught Street, Hyde Park, London W2 2AB Registered Company Number 05334580.



This paper is
100% recyclable