

## Hawtrey Road, NW3

£6,000 Per calendar month

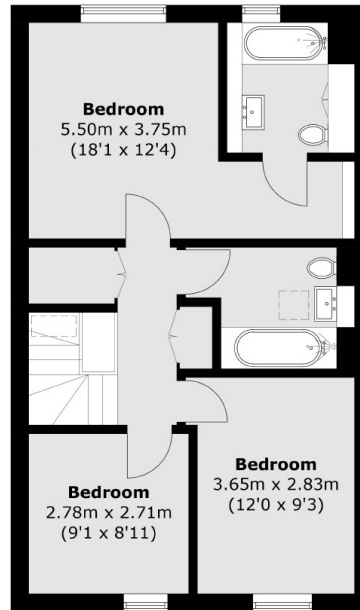
Located within walking distance of Primrose Hill, Chalk Farm and Finchley Road tubes, this spacious townhouse boasts six bedrooms, two bathrooms (one en-suite), and a private garden. The property has been completely refurbished throughout and features a large kitchen/breakfast room, utility room, and a spacious reception room.

Hawtrey Road ideally located for Primrose Hill and Swiss Cottage underground station (Jubilee line) and Chalk Farm (Northern Line).

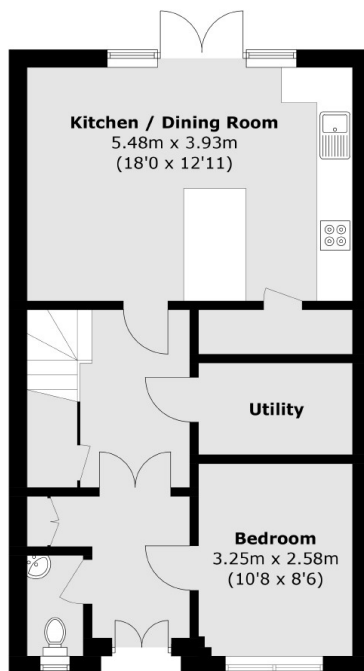
### Features

- Six Bedrooms
- Two Bathrooms
- Open Plan Kitchen
- Private Garden
- House
- Recently Refurbished

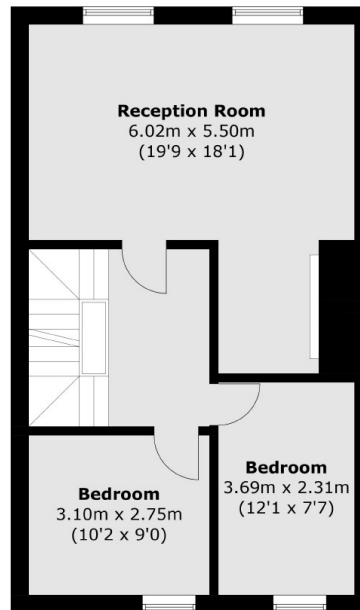
# Hawtrey Road, London, NW3



**Second Floor**



**Ground Floor**



**First Floor**

Total area (approx.): 160.7 sq. m (1,729.8 sq. ft)