



WHITCOME MEWS, TW9

£525,000

Marsh & Parsons are proud to present an immaculate one bedroom flat in the sought after Kew Riverside Development.

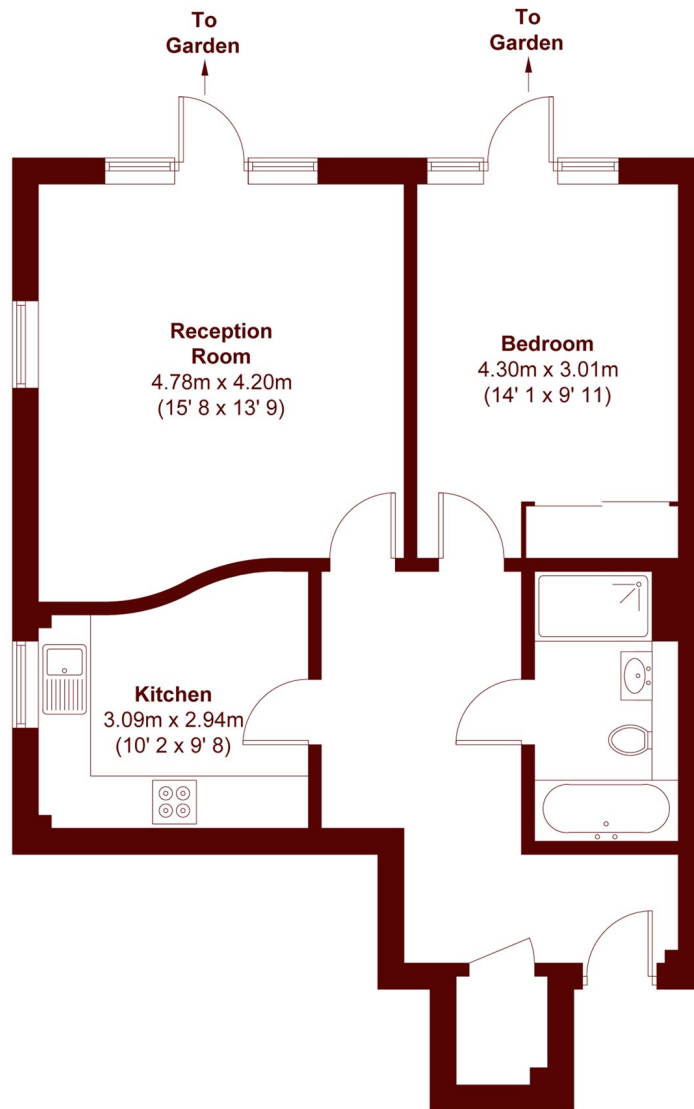
One Bedroom
Ground Floor
Private Garden

Separate Kitchen
Underground Car Park
Chain Free

@marshandparsons
marshandparsons.co.uk

MARSH &
PARSONS

STEP INSIDE WHITCOME MEWS



APPROX. GROSS INTERNAL FLOOR AREA = 657 SQFT / 61 SQM

Barnes & East Sheen
020 8563 8333

Energy Rating: C We aim to make our particulars both accurate and reliable. However, they are not guaranteed; nor do they form part of an offer or contract. If you require clarification on any points then please contact us, especially if you're traveling some distance to view. Please note that appliances and heating systems have not been tested and therefore no warranties can be given as to their good working order

**MARSH &
PARSONS**