



**Price**

**£310,000**

**Leasehold**

2x  1x  1x 

**Bramley Vale, Cranleigh,  
Surrey, GU6**

**cubitt & west**  
Helping you move forwards



## Main features

- Bright & Spacious ground floor apartment with easy access to village
- Shared ownership price equates to 100% but a min of 25% is available
- Juliet Balcony from living Room
- Huge entrance hall with ample storage
- Views over the communal grounds

## Accommodation

### LOWER GROUND FLOOR

Entrance Hallway

Kitchen: 12'4 x 9'2 (3.76m x 2.80m)

Lounge: 14'4 x 12'0 (4.37m x 3.66m)

Bedroom 1: 12'8 x 11'7 (3.86m x 3.53m)

Bedroom 2: 14'4 x 8'7 (4.37m x 2.62m)

Bathroom

### OUTSIDE

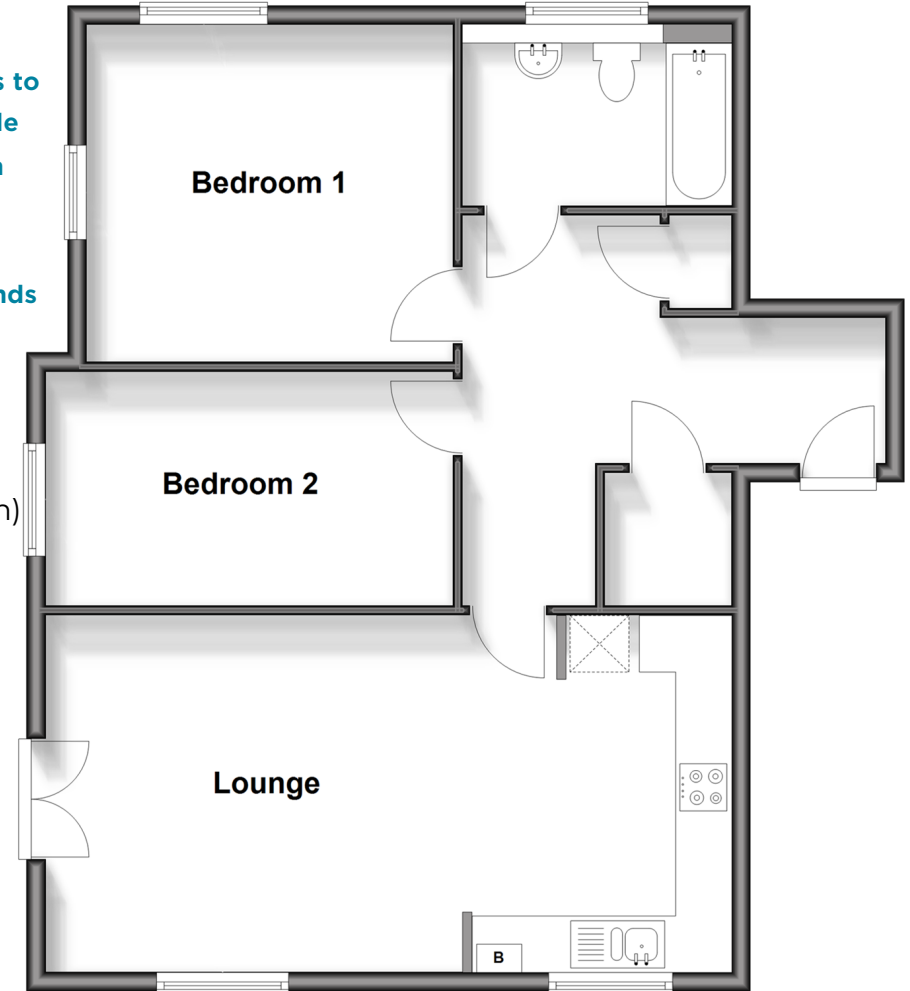
Allocated Parking

Visitor Parking

Communal Gardens

## Lower Ground Floor

Approx. 74.4 sq. metres (800.6 sq. feet)



Call Cranleigh - 01483 271567 ■ [cubittandwest.co.uk](http://cubittandwest.co.uk)

- Legal advice should be taken to verify fixtures/fittings, planning, alterations and/or lease details
- Appliances & services are untested, dimensions are approximate and floor plans are not to scale



20306913/20250422/CH/KAB