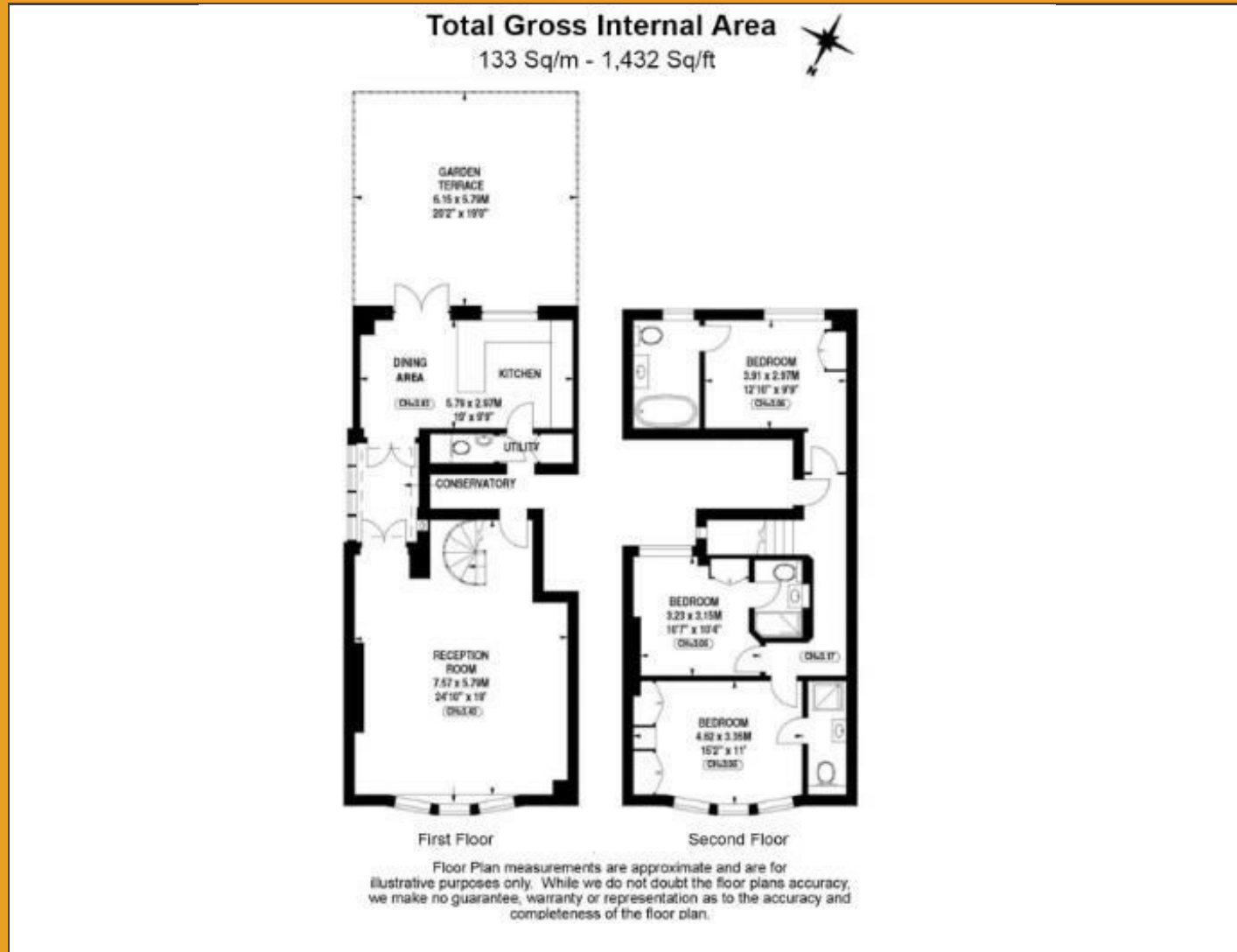


# Floor Plan

**BRICKS.**  
ESTATE AGENTS

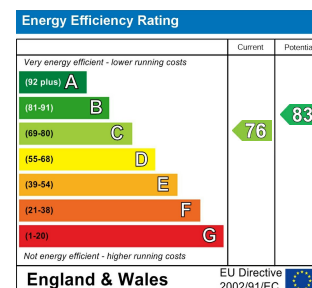


**£3,850,000**

These particulars, whilst believed to be accurate are set out as a general outline only for guidance and do not constitute any part of an offer or contract. Intending purchasers should not rely on them as statements of representation of fact, but must satisfy themselves by inspection or otherwise as to their accuracy. No person in this firms employment has the authority to make or give any representation or warranty in respect of the property.

## Contact Us

- 0203 634 9998
- hello@bricksestateagents.co.uk
- 186 Queens Road, Buckhurst Hill, Essex, IG9 5BD



## Flat 1, 16 Henrietta Street, WC2E 8QH

Bricks Estate Agents proudly presents a unique opportunity to acquire an extraordinary three-bedroom apartment with three en-suite bathrooms and a stunning south-facing garden terrace, nestled on one of Covent Garden's premier streets. Occupying the entire first and second floors of an impressive Victorian red brick townhouse dating back to 1888, this residence seamlessly blends historic charm with contemporary luxury.

# Flat 1, 16 Henrietta Street, WC2E 8QH



- \*Guide Price : £3,850,000\*
- Stunning South-Facing Garden Terrace In Covent Garden
- Grand Victorian Living Room And Bespoke Kitchen Create Inviting Space
- Soaring Ceilings Over Three Meters High Enhance Volume
- Airy Dining Area Connects To Kitchen Through Charming Conservatory
- Extraordinary Three-Bedroom Apartment With En-Suite Bathrooms
- Occupies Entire First And Second Floors Of Victorian Townhouse
- Exquisite Double Bedrooms Feature Luxurious En-Suite Bathrooms
- Traditional Craftsmanship Meets Modern Elegance With Marble Fireplace
- Prime Covent Garden Location With Vibrant Cultural Scene

**Living Room**  
24'10" x 18'11" (7.57 x 5.79)

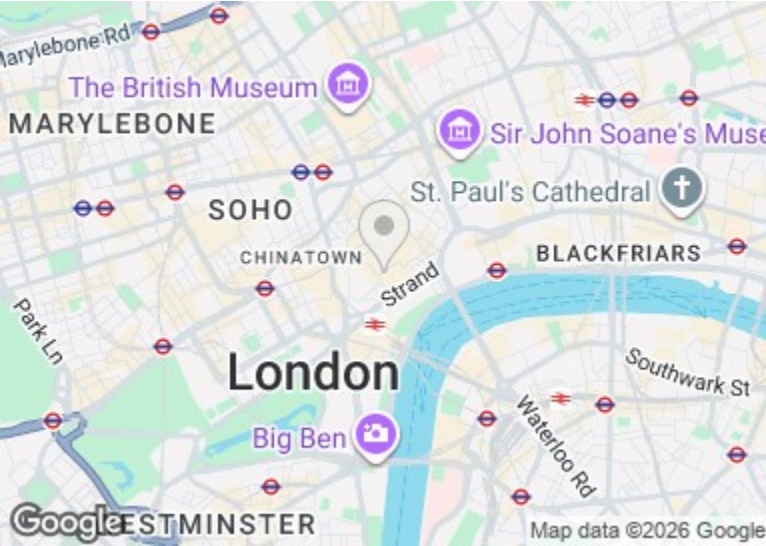
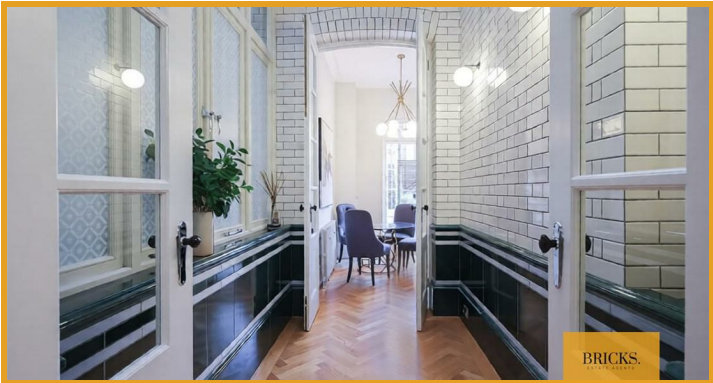
**Kithcen / Dining**  
18'10" x 8'9" (5.75 x 2.67)

**Garden Terrace**  
20'2" x 18'11" (6.15 x 5.79)

**Master Bedroom**  
12'9" x 9'8" (3.91 x 2.97)

**Bedroom Two**  
10'7" x 10'4" (3.23 x 3.15)

**Bedroom Three**  
15'1" x 10'11" (4.62 x 3.35)



**Directions**

**BRICKS.**  
ESTATE AGENTS