



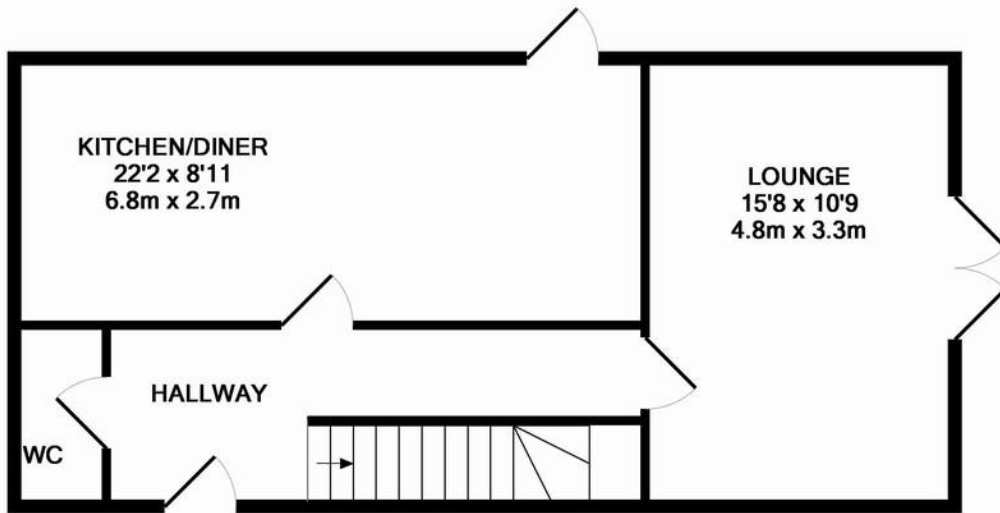
MADISON WALK, EDGBASTON

BIRMINGHAM, B15 2GP

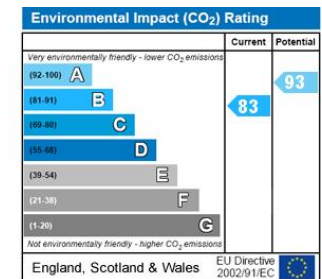
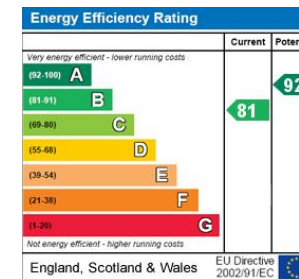
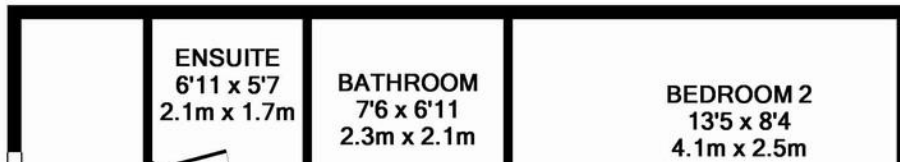
£1800 PCM

PARK CENTRAL | 3 Bedrooms | Garden | Garage | Unfurnished | Walking distance to Five Ways Train Station | Available now.

Davidson



GROUND FLOOR



Davidson

OFFICE
22 Harborne Road
Birmingham
West Midlands
B15 3AA

0121 455 7727
info@davidsonstates.co.uk
www.davidsonstates.co.uk

Agents Note: Whilst every care has been taken to prepare these particulars, they are for guidance purposes only. All measurements are approximate and are for general guidance purposes only and whilst every care has been taken to ensure their accuracy, they should not be relied upon and potential buyers/tenants are advised to recheck the measurements