



**Atherton Court, Eton**  
£349,950 | £2,300 pcm

**OSBORNE HEATH**



The layout of this apartment has been reconfigured by a previous owner resulting in one bedroom being opened out to the kitchen to make open-plan living, and the original living room being turned into a large double bedroom. This could be reversed by adding a stud wall.

The living area and bedroom face south and the apartment is on the top floor so it is filled with natural light and has views of the castle and river. The property includes a modern shower room, modern kitchen and a utility area.

Atherton Court is on Meadow Lane, close to Eton high street and by the River Thames. The property is also within a short walk of Eton College, Windsor and Eton Riverside Station, Windsor Castle and local shops and restaurants. By road Eton is convenient for the M4, M25 and Heathrow Airport.

# Atherton Court

Meadow Lane, Eton

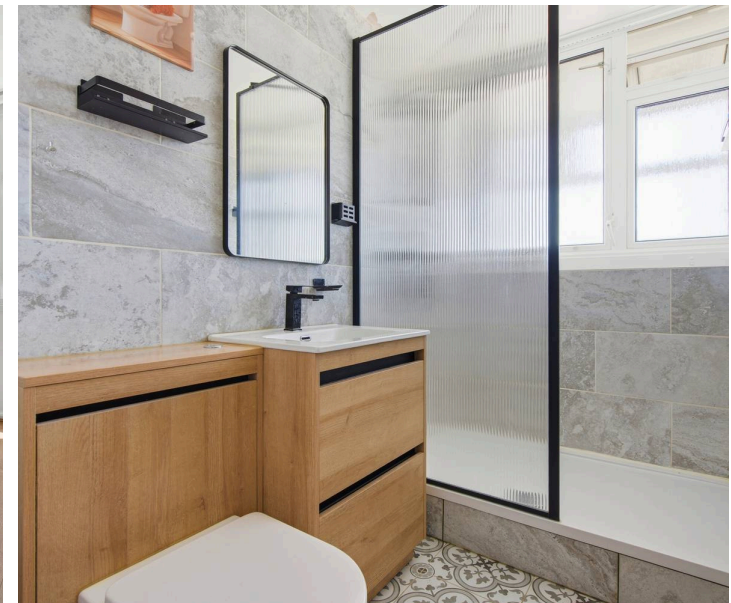
- Two Bedrooms
- Modern Kitchen
- Modern Bathroom
- Top Floor
- View Of Windsor Castle
- View Of River Thames
- Extended Lease
- Close To Shops
- Close To Station
- No Onward Chain

Council Tax band: D

Tenure: Leasehold

EPC Energy Efficiency Rating: D

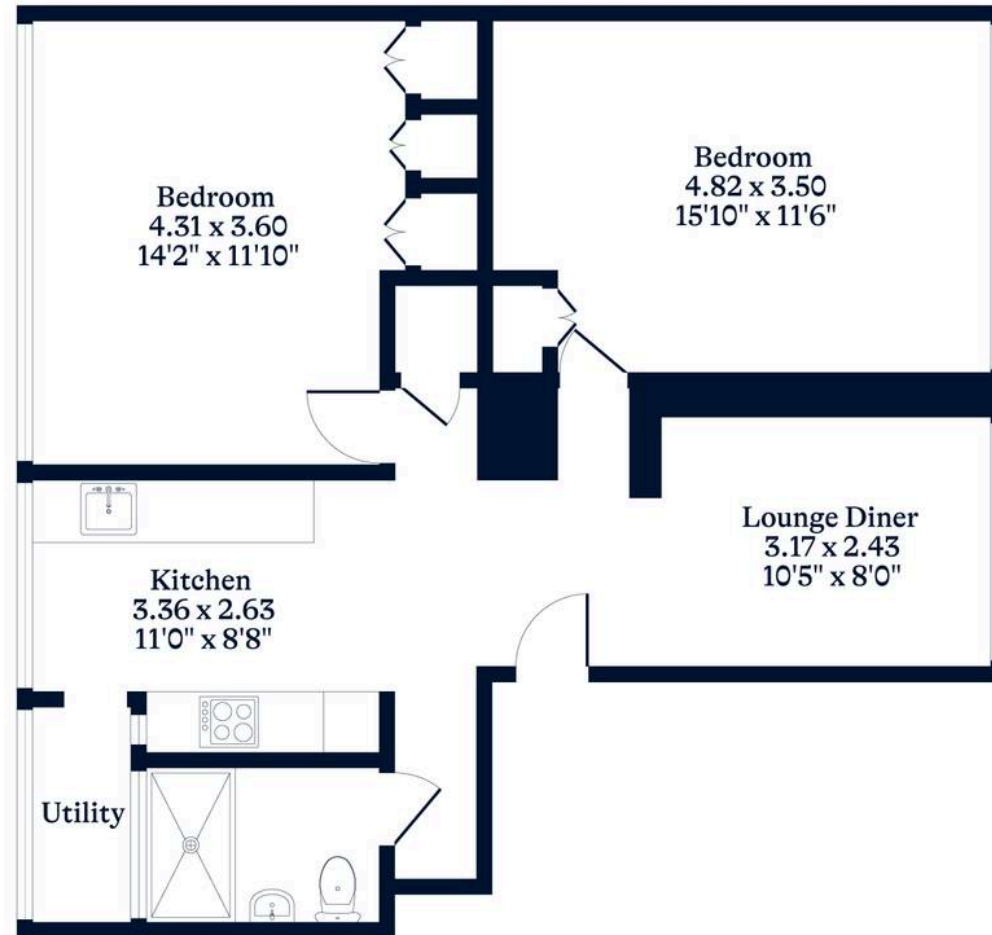
EPC Environmental Impact Rating: D



**APPROXIMATE FLOOR AREA**  
Apartment - 69.00 sq m - 748 sq ft  
(Gross Internal Area)



**NOT TO SCALE**  
This plan is for illustration purposes only



[OSBORNEHEATH.CO.UK](http://OSBORNEHEATH.CO.UK)

This floor plan has been created by Property Shoot Ltd following the RICS code of measuring and is for indicative guidance only. Whilst every attempt has been made to ensure the accuracy of the floor plan contained here, measurements of doors, windows and rooms are approximate and no responsibility is taken for any error, omission or misstatement.

Details shown on this floorplan, including all measurements, areas and proportions cannot be guaranteed by either the provider or estate agency and should not be relied upon.