



Guide Price
£260,000

Freehold

3x  1x  1x 

**Hartington Street,
Chatham, Kent, ME4**

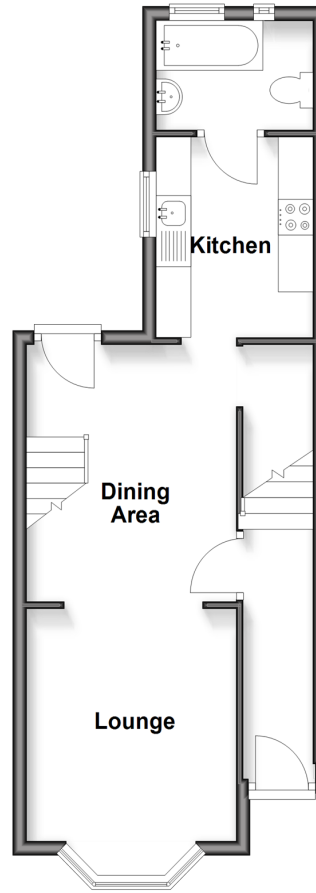
OVER 60?

Secure this property
for up to **59% less!**

Wards
Helping you move forwards

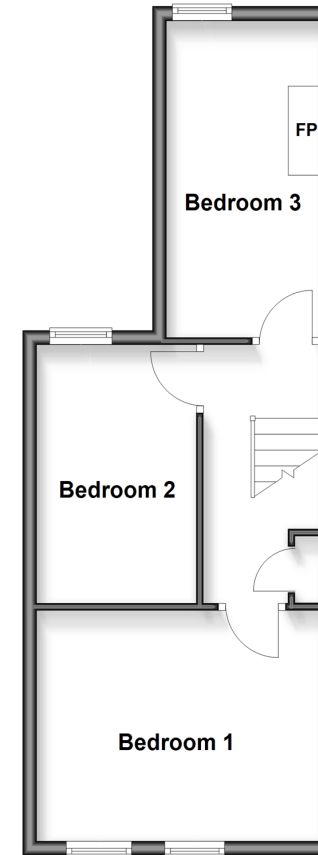
Split Level Ground Floor

Approx. 38.3 sq. metres (412.0 sq. feet)



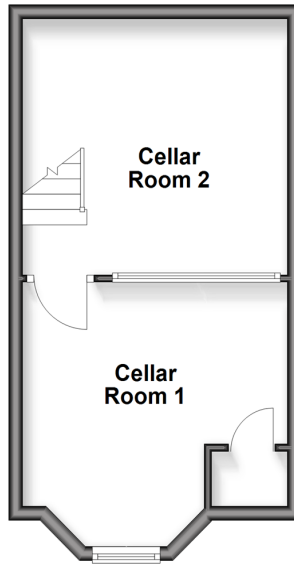
First Floor

Approx. 39.0 sq. metres (419.8 sq. feet)



Basement

Approx. 27.1 sq. metres (291.7 sq. feet)



Accommodation

GROUND FLOOR

Entrance Hall

Lounge: 11'5 x 9'8 (3.48m x 2.95m)

Dining Area: 11'10 x 10'2 (3.61m x 3.10m)

Kitchen: 8'8 x 7'5 (2.64m x 2.26m)

Bathroom

BASEMENT

Cellar Room 1: 12'4 x 11'9 (3.76m x 3.58m)

Cellar Room 2: 12'9 x 12'8 (3.89m x 3.86m)

FIRST FLOOR

Landing

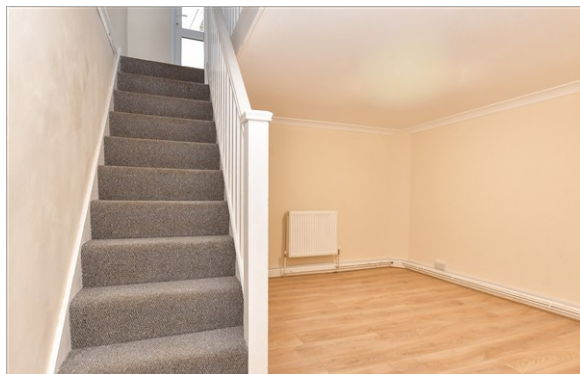
Bedroom 1: 13'3 x 10'8 (4.04m x 3.25m)

Bedroom 2: 11'10 x 7'7 (3.61m x 2.31m)

Bedroom 3: 14'8 x 7'8 (4.47m x 2.34m)

OUTSIDE

Rear Garden



Main features

- End of terrace Victoria house set over 3 floors
- Great opportunity to make a house a home
- Versatile space that can be adapted to suit your needs
- Ideal purchase for a first time buyer or an investor looking to add to portfolio
- Close to local amenities, great schools and transport links



Nearest Schools

Primary Schools: Phoenix Junior Academy 0.3 miles, All Saints C of E Primary, Chatham 0.4 miles, New Road School and Nursery Unit 0.9 miles

Secondary Schools: Victory Academy 0.9 miles,



Transport Information

Train Stations: Chatham 0.5 miles, Rochester 1.5 miles, Strood 2.4 miles



Address

Hartington Street, Chatham, Kent, ME4



Directions

For directions to this property please contact us.



Wards
Helping you move forwards

Call Chatham Branch 01634 841243 ■ wardsofkent.co.uk



- Legal advice should be taken to verify fixtures/fittings, planning, alterations and/or lease details
- Appliances & services are untested, dimensions are approximate and floor plans are not to scale
- Through a Homewise Home For Life Plan people aged 60+ can secure this property for up to 50% less, by purchasing a Lifetime Lease

EPC RATING

CURRENT:	POTENTIAL:
E(43)	D(55)

10435159/20251213/AP/RC