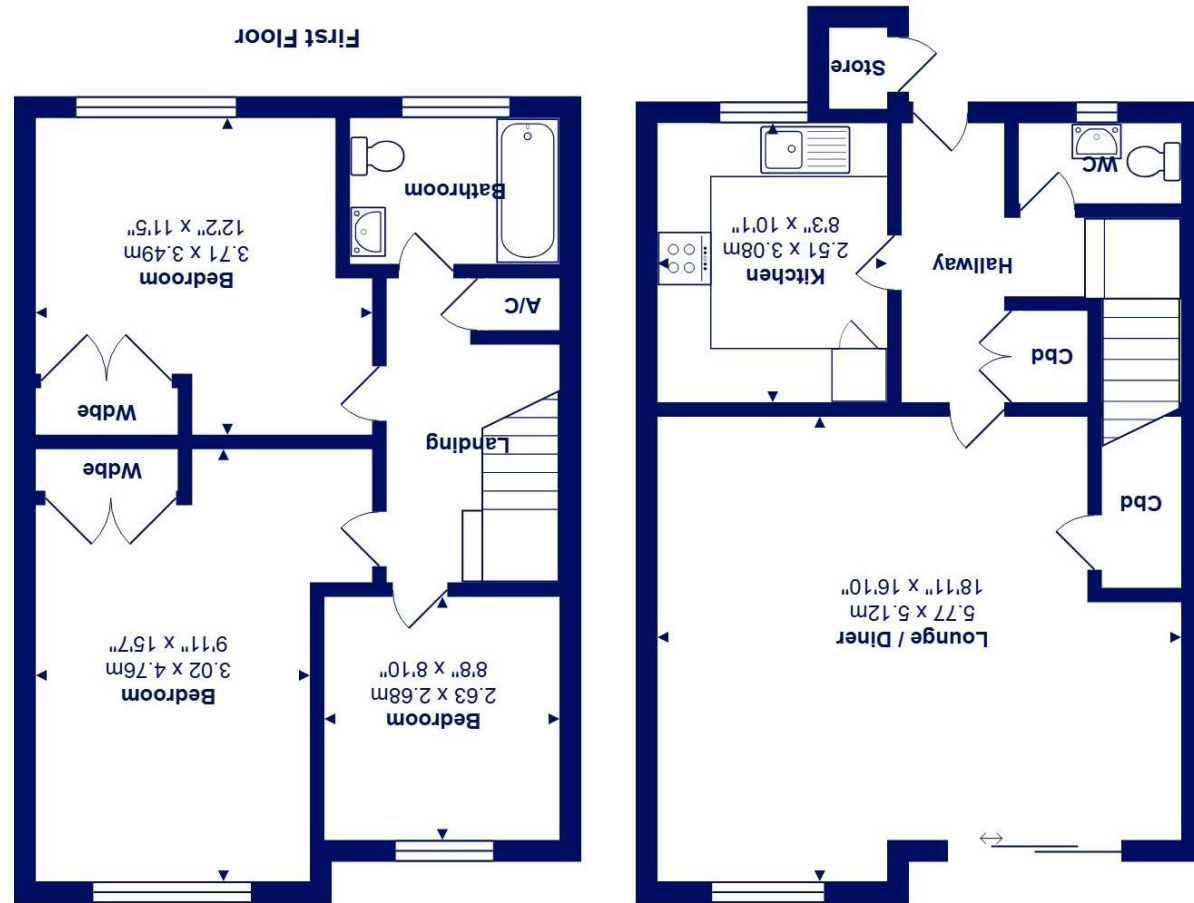




All measurements are approximate and for display purposes only  
Total Area: 94.7 m<sup>2</sup> ... 1019 ft<sup>2</sup>



Ground Floor



89 Rowan Drive, Highcliffe on Sea, BH23 4SH

£425,000

**Mitchells**  
1963 — TODAY

A very nicely presented family home with a show stopping garden that has been superbly landscaped to make the most of the plot. This spacious home enjoys about 1020sq ft of living space with generous bedrooms and a large living room leading onto the south facing sun deck whilst there is a garage and allocated space opposite.

Traditionally built by Hoburne and within the catchment area for both Highcliffe Primary and Comprehensive schools, this super house enjoys a pretty outlook from both the front and back over the stunning gardens. Much care and attention has gone into creating wonderful outside space with various outdoor seating areas that utilise a mix of materials, brick built BBQ and several garden buildings/greenhouse. The local shop is nearby and Nea Meadows Nature Reserve is across the road which is perfect for dog walking or an evening stroll.

- Smartly presented end terrace house with generous room sizes and a tranquil, sylvan backdrop
- Three good sized first floor bedrooms with plenty of fitted cupboards, family bathroom
- Well fitted kitchen with large picture window overlooking the colourful and private front garden- there is even a child's swing on the tree that can be seen through the window!
- Large living room with wood effect vinyl floor and patio doors leading to the sun deck and garden
- Wonderful garden that really needs to be seen to fully appreciate, just superb and with all day sunshine
- Gas fired heating, UPVC double glazing, tasteful decor
- Quiet, no through road with garaging, allocated parking space plus further on road parking
- Close to the bus stop and shops at Saulflands with Highcliffe village and beach about one mile away
- A really nice family home in a great location

EPC Rating Band: C

Council Tax Band: D

Successful buyers will be required to complete online identity checks provided by Lifetime Legal. The cost of these checks is £45 inc. VAT per purchase which is paid in advance, directly to Lifetime Legal. This check verifies your identity in line with our obligations as stipulated by our regulatory body, HMRC

