

Buy. Sell. Rent. Let.



Alexandra Close, Grimsby



2



1



1

When it comes to
property it must be


lovelle



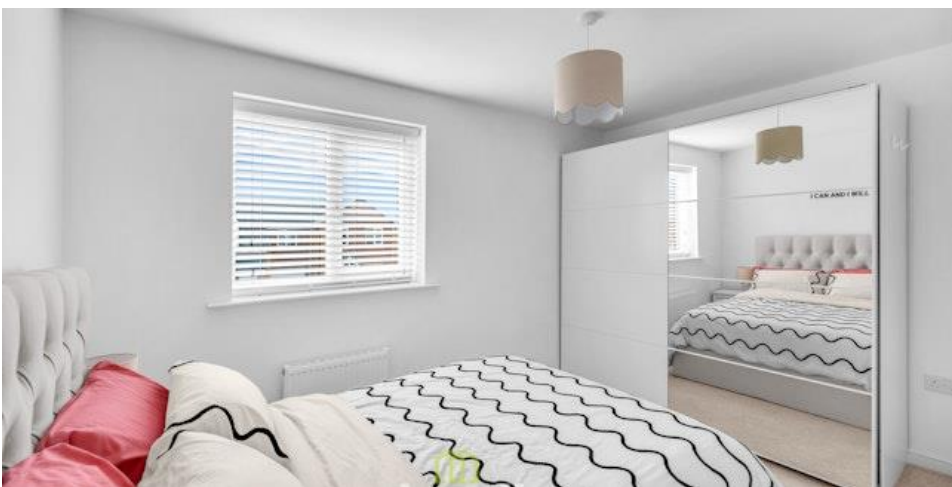
£144,950

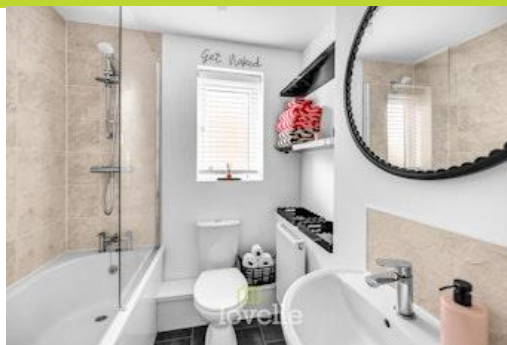


A modern 2023-built two-bedroom semi-detached house for sale in Grimsby, offering a bright lounge, fitted dining kitchen, two double bedrooms, contemporary bathroom, driveway parking and a pleasant garden, well located for the town centre, transport links and local amenities, and available with no onward chain.

Key Features

- Modern Semi-Detached House
- Two Generous Size Bedrooms
- Stunning Kitchen & Bathroom
- Additional GF Toilet
- Driveway & Pleasant Garden
- uPVC DG & GCH
- EPC rating B
- Tenure: Freehold





****NO CHAIN**** Lovelle offer to market this two-bedroom semi-detached house on Macaulay Park in Grimsby, offering modern accommodation suited to first-time buyers, families and couples.

Built in 2023, the property features an entrance porch with access to a cloakroom with WC and sink. The ground floor includes a spacious lounge, stylishly presented with dual aspect windows, providing good natural light. The modern kitchen is fitted with units and contemporary worktops, oven and gas hob, sink, and plumbing for a washer, together with dining space and a large walk-in cupboard, ideal for additional storage.

Upstairs, there are two double bedrooms and a bathroom fitted with a bath with shower over, sink and WC. The house benefits from uPVC double glazing and gas central heating. Externally, there is a driveway and a pleasant garden with a patio area and lawn, suitable for outdoor seating and everyday use. The property is offered with no chain.

The house is well located for Grimsby town centre, which provides a range of shops, supermarkets and services, as well as cafes and restaurants. Nearby green spaces and local walking routes offer opportunities for leisure and exercise.

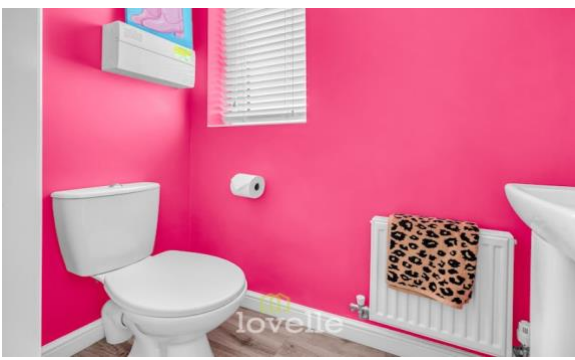
Grimsby Town railway station provides services to destinations including Manchester, Lincoln and Barton-on-Humber, with journey times to Lincoln typically around 1 hour. Regular bus services operate in and around Grimsby, connecting residential areas with the town centre and surrounding districts.

Disclaimer

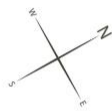
We endeavour to make our sales particulars accurate and reliable, however, they do not constitute or form part of an offer or any contract and none is to be relied upon as statements of representation or fact. Any services, systems and appliances listed in this specification have not been tested by us and no guarantee as to their operating ability or efficiency is given. All measurements have been taken as a guide to prospective buyers only, and are not precise. If you require clarification or further information on any points, please contact us, especially if you are travelling some distance to view.

Mobile and broadband

It is advised that prospective purchasers visit checker.ofcom.org.uk in order to review available wifi speeds and mobile connectivity at the property.



Ground Floor
Approx. 32.9 sq. metres (350.7 sq. feet)



First Floor
Approx. 28.9 sq. metres (310.7 sq. feet)



Total area: approx. 61.4 sq. metres (661.4 sq. feet)

The provided floor plan is intended for general informational purposes only and may not accurately represent the exact dimensions, layout, or features of the property. The floor plan should not be relied upon for making decisions about purchasing, renting, or modifying the property. Actual measurements and features may vary. It is recommended that interested parties conduct a physical inspection of the property to verify the accuracy of the floor plan and obtain specific information about the property's condition, amenities, and any other relevant details.
Plan produced using PlanUp.



lovelle

When it comes to **property**
it must be

01472 251918

grimsby@lovelle.co.uk

