



Falcon

01752 600444

33 Royal Navy Avenue

Keyham, Plymouth, PL2 2AF

Guide Price £210,000 - £220,000



In Brief

Semi detached modern property

Reception Rooms Lining room & Kitchen - Diner

Bedrooms 2 Double Bedrooms

Heating Gas Central Heating

Area 754 Sq Ft

Tenure Freehold

Parking Off street parking and Garage

Council Tax A

Description

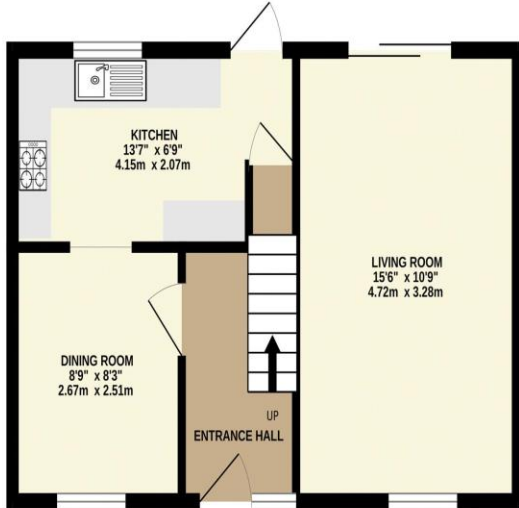
Located on the ever-popular Royal Navy Avenue in Keyham, this well-presented two-bedroom Semi-detached house offers spacious and versatile living in a highly convenient setting, close to Plymouth Dockyard and the Naval Base. The property enjoys off-road parking and a garage, along with a good-sized, level rear garden laid mainly to lawn and featuring a mature tree — ideal for outdoor entertaining or family relaxation. Inside, the accommodation is both modern and comfortable, comprising a living room, a dining area, and a contemporary fitted kitchen with an adjoining diner. Upstairs are two double bedrooms and a family bathroom, with excellent potential to reconfigure the layout to create a third bedroom if desired. Further benefits include gas central heating and double glazing throughout. This attractive home would suit a range of buyers, from young families to professionals seeking easy access to local amenities and transport links. Early viewing is highly recommended.

Need A Mortgage?

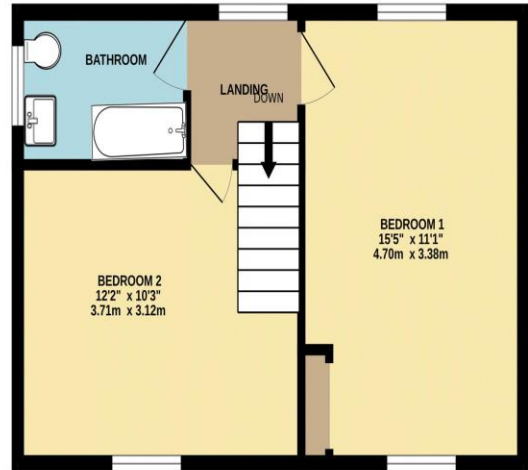
Don't pay more than you need to for your mortgage advice:
ours is only £195 paid when you move!

Floor Plans

GROUND FLOOR
377 sq.ft. (35.0 sq.m.) approx.



1ST FLOOR
377 sq.ft. (35.0 sq.m.) approx.



TOTAL FLOOR AREA: 754 sq.ft. (70.1 sq.m.) approx.
Made with Metropix ©2025

Fixed Price Conveyancing

A complete solution from just £600 with No sale – No Fee



We have not tested any apparatus, equipment, fixtures and fittings or services and so cannot verify that they are connected, in working order or fit for the purpose. Neither have we had sight of the legal documents to verify the Freehold or Leasehold status of any property; or sight of any consents, including Planning Permissions, building Regulations and Breaches of Covenants that may be required for alterations to the property. A buyer is advised to obtain verification from their Solicitor and/or Surveyor. Items shown in photographs are NOT included unless specifically mentioned within the Sales Particulars. Any floor plans on these details are not drawn to scale and are intended for guidance only

Falcon Property is an Introducer to Bradleys Financial Management Ltd. They are appointed representatives of Sesame Ltd who are authorised and regulated by the Financial Services Authority. Bradleys do not charge for mortgage advice, however a fee paying option is available. Typical fee is £195. Bradleys Financial Management: 16 Mannamead Road, Mutley, Plymouth, PL4 7AA

Your home may be repossessed if you do not keep up repayments on your mortgage.

