

CHARMILL

RESIDENTIAL



Boydell Court, St John's Wood NW8

£1,300 Per week



St. Johns Wood Park



Description

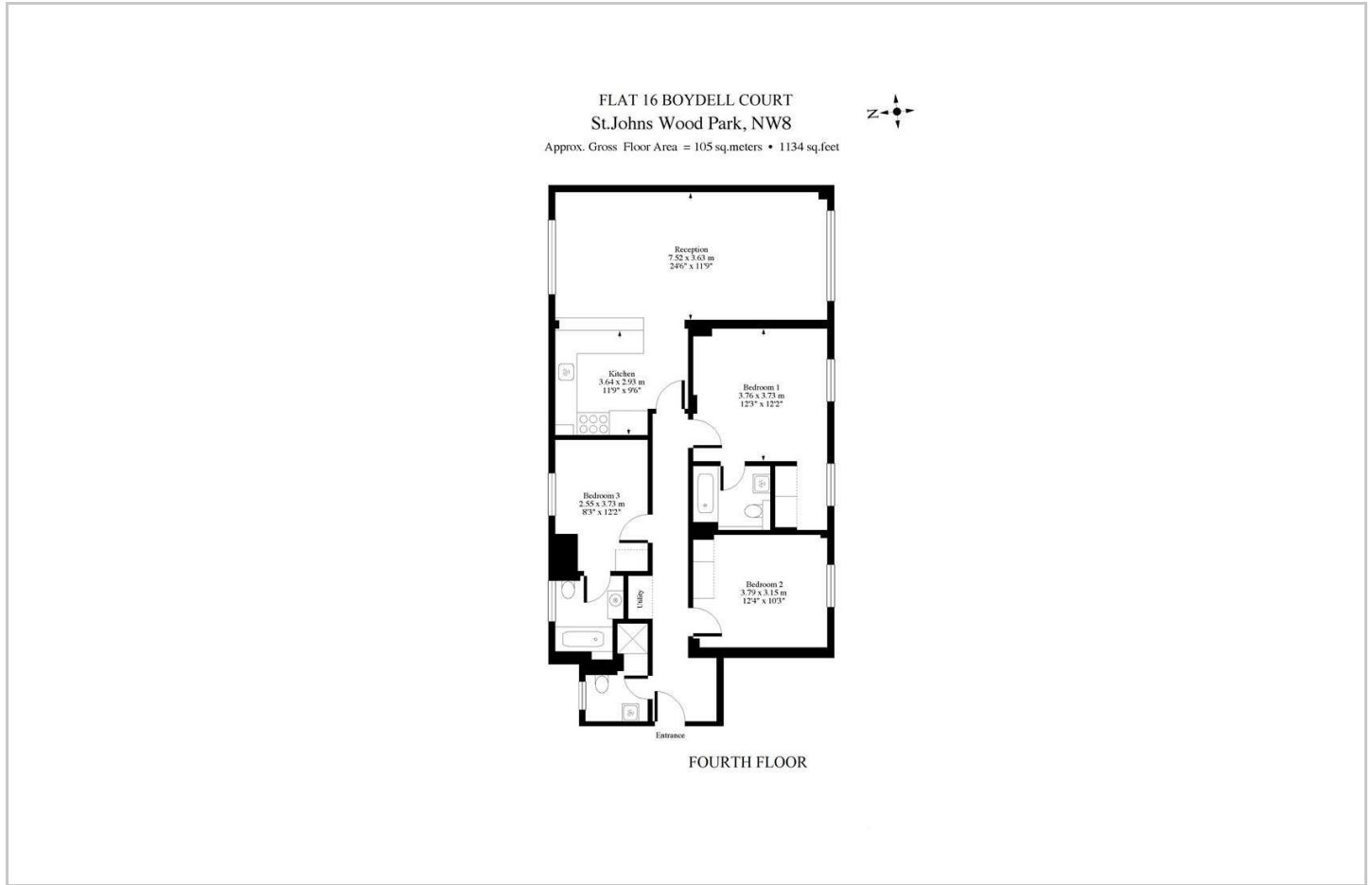
A superb three double bedroom apartment available on a furnished/unfurnished basis within this gated purpose built block in St John's Wood. The apartment is set on the fourth floor and comprises a principal bedroom with en-suite bathroom, two further double bedrooms one with an en-suite bathroom, family shower room, fully fitted integrated kitchen, a large reception/dining room, cloakroom and utility room. The apartment further benefits from air conditioning and a 24 hour porter. St John's Wood is one of the most sought after residential areas in London, situated next to Regent's Park offering a peaceful village atmosphere but yet only minutes from London's West End. The apartment is conveniently located for the shopping and transport facilities of St John's Wood and Swiss Cottage (Jubilee line).

- Three bedrooms
- Second floor
- Furnished/Unfurnished
- Three bathrooms
- 24 hour porter
- Heating & Hotwater included

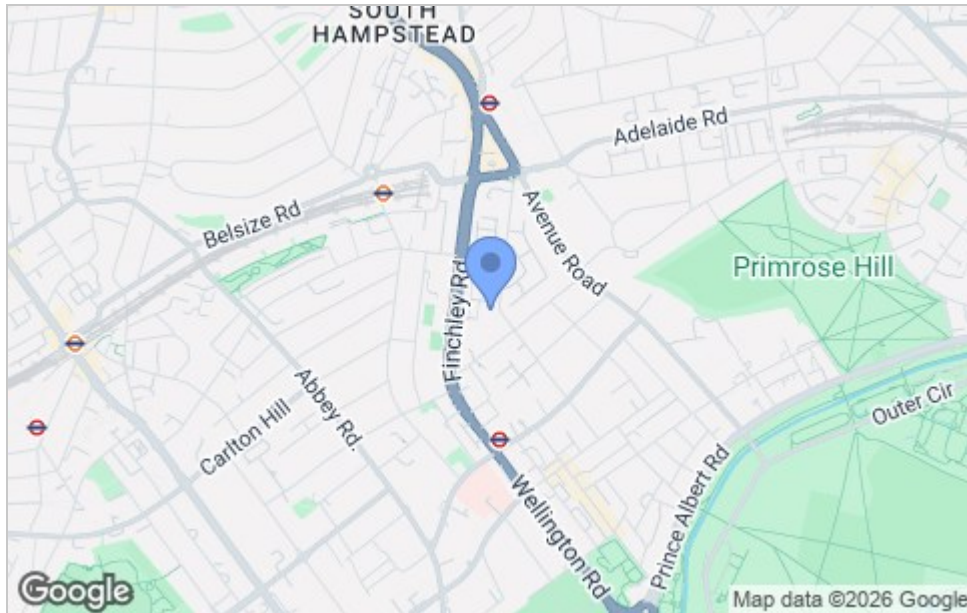




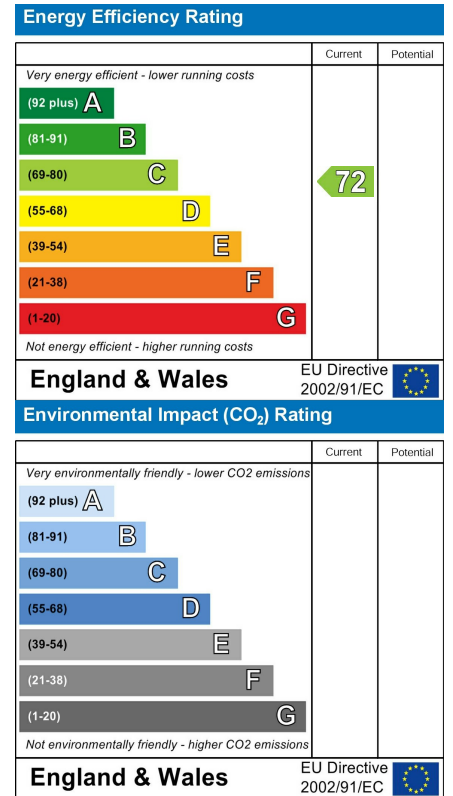
Floor Plan



Area Map



Energy Efficiency Graph



Viewing

Please contact us on 020 7046 6275 if you wish to arrange a viewing appointment for this property or require further information.



These particulars, whilst believed to be accurate are set out as a general outline only for guidance and do not constitute any part of an offer or contract. Intending purchasers should not rely on them as statements of representation of fact, but must satisfy themselves by inspection or otherwise as to their accuracy. No person in this firm's employment has the authority to make or give any representation or warranty in respect of the property.

020 7046 6275 • sales@chamillresidential.co.uk • 51 Maida Vale, Little Venice, London W9 1SD
 charmillresidential.co.uk