



Mile End Road,, London, E1

BUTLER & STAG



Beautifully presented one bedroom apartment with a private balcony, just seconds from Stepney Green underground station.



- One Bedroom Apartment
- Generously Proportioned
- Opposite Stepney Green Tube Station
- Furnished
- Beautifully Presented
- Private Rear Balcony
- Wealth of Local Amenities
- Available from 7th January 2026

This charming first floor residence blends style, comfort and plenty of convenience.



Featuring a gorgeous living space with a tranquil rear balcony, semi open-plan to a stylish kitchen and a welcoming entrance, the apartment is completed by a generously-sized double bedroom, a contemporary bathroom and plenty of delightful finishing touches.

The location is ultra-convenient, with Stepney Green underground station directly opposite, Whitechapel within touching distance and a wealth of amenities and green spaces all on hand.

This must-see property is offered furnished and is available from 7th January 2026.

EPC Rating B
Council Tax Band B



Mile End Road

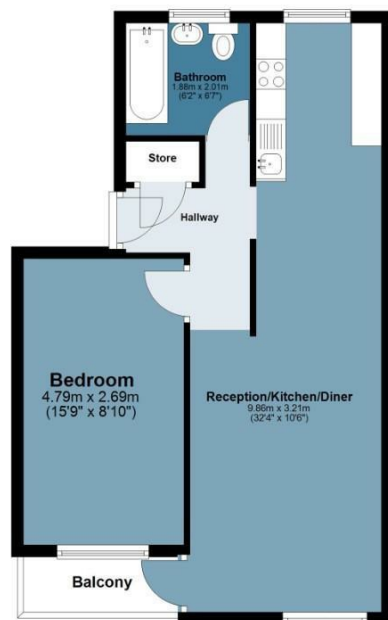
Approx. Gross Internal Area 49.1 Sq M (528.1 Sq Ft)

BUTLER & STAG



First Floor

Approx. 49.1 sq. metres (528.1 sq. feet)



Measurements are approximate and for illustration purposes only. While we do not doubt the accuracy and completeness, we advise you conduct a careful independent assessment of the property to determine monetary value.

© @modephotouk www.modephoto.co.uk

IMPORTANT NOTICE - These particulars have been prepared in good faith and they are not intended to constitute part of an offer or contract. We have not performed a structural survey on this property and the services, appliances and specific fittings have not been tested. All photographs, measurements, floor plans and distances referred to are given as a guide and should not be relied upon.

BUTLER & STAG

☎ 020 8102 1236

🏠 508 Roman Road, Bow, London, E3 5LU

✉ bow@butlerandstag.com

www.butlerandstag.uk