

## South Villas, NW1

£750,000

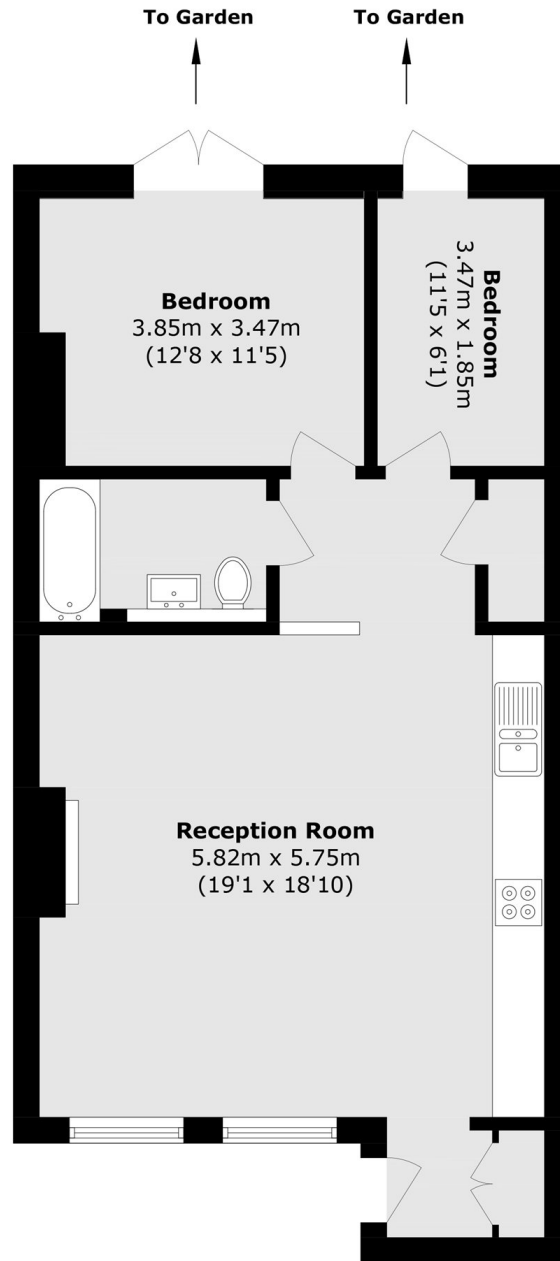
On one of the most sought after tree-lined roads in Camden is this two bedroom maisonette. The property has large windows throughout, an open plan reception room/kitchen and access to a garden.

Set within the Camden Square Conservation area and within the catchment for Camden School for Girls. The shopping and transport facilities of Camden Town are close by, with easy access to Kings Cross/St Pancras.

### Features

- Two Bedrooms
- Private Entrance
- Garden
- Share Of Freehold
- Chain Free
- Great Location

# South Villas, London, NW1



Total area (approx.): 69.1 sq. m (743.7 sq. ft)