



Norwood Crescent, March  
**OIEO £220,000 Freehold**

**Sharman  
Quinney**



# Key Features



- Walking Distance to Local Train Station
- Off Road Parking
- Spacious Family Home
- Cul-de-sac Location
- Well Presented Throughout

## Entrance Hall -

Carpet flooring, access to kitchen, lounge, downstairs WC and under stair storage

## Downstairs WC -

Tiled flooring, window to front, white two-piece suite with wall mounted hand basin and WC

## Kitchen - 3.63m x 3.06m (11'11" x 10'0")

Hard flooring, window to front, accessed from entrance hall and lounge. Fitted with a range of base and wall units, integrated double oven, gas hob and overhead extractor. Space for washing machine and dishwasher, stainless steel sink and wall mounted boiler.

## Lounge - 5.27m x 4.05m (17'3" x 13'3")

Carpet flooring, open into conservatory through





archway and old window opening, which lets in an abundance of natural light.

Conservatory - 4.62m x 3.47m (15'2" x 11'5")  
Hard flooring, spanning the entire width of the house

Bedroom One - 4.08m x 3.21m (13'5" x 10'6")  
Carpet flooring, window to rear

Bedroom Two - 3.68m x 3.21m (12'1" x 10'6")  
Carpet flooring, window to front

Bedroom Three - 3.77m x 1.96m (12'4" x 6'5")  
Hard flooring, window to rear

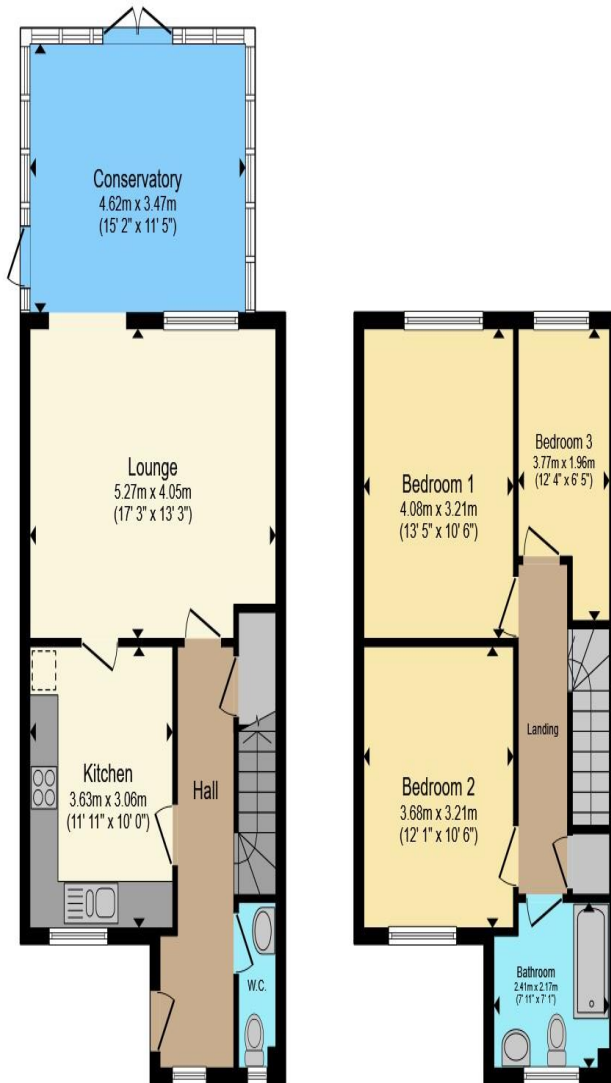
Bathroom - 2.41m x 2.17m (7'11" x 7'1")  
Tiled flooring and walls, window to front, three-piece, white suite comprising of panelled bath with overhead shower and glass screen, pedestal hand wash basin and low-rise WC.

Outside -

The front garden is gravelled for low maintenance and allows for off road parking for multiple cars. A side gate allows access into the private rear garden.

The rear garden is also low maintenance consisting of a decked area, tiled patio and gravel. Along with decorative borders a timber pergola and garden shed.





**Ground Floor**

**First Floor**

Total floor area 107.4 m<sup>2</sup> (1,156 sq.ft.) approx

This floor plan is for illustrative purposes only. It is not drawn to scale. Any measurements, floor areas (including any total floor area), openings and orientation are approximate. No details are guaranteed, they cannot be relied upon for any purpose and they do not form part of any agreement. No liability is taken for any error, omission or misstatement. A party must rely upon its own inspection(s). Powered by [www.propertybox.io](http://www.propertybox.io)

**Sharman  
Quinney**

To view this property call Sharman Quinney on:  
**01354 661166**

# Selling your property?

Contact us to arrange a **FREE** home valuation.

 01354 661166

 8 Broad Street, MARCH, Cambridgeshire, PE15 8TG

 march@sharmanquinney.co.uk

 [www.sharmanquinney.co.uk](http://www.sharmanquinney.co.uk)



 SCAN ME



Sharman Quinney Holdings Limited is registered in England and Wales under company number 4174227, Registered Office is Cumbria House, 16-20 Hockliffe Street, Leighton Buzzard, Bedfordshire, LU7 1GN. VAT Registration Number is 500 2481 05.

1: These particulars do not constitute part or all of an offer or contract. 2: The measurements indicated are supplied for guidance only and as such must be considered incorrect. 3: Potential buyers are advised to recheck the measurements before committing to any expense. 4: Sharman Quinney has not tested any apparatus, equipment, fixtures, fittings or services and it is the buyers interests to check the working condition of any appliances. 5: Sharman Quinney has not sought to verify the legal title of the property and buyers must obtain verification from their legal representative. 6: Intending purchasers will be asked to produce identification documentation at a later stage and we would ask your co-operation in order that there will be no delay in agreeing the sale. Ref: MRC206945 - 0003

