



Hamilton Court, London W9 1QR

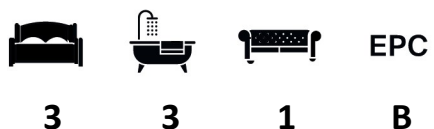
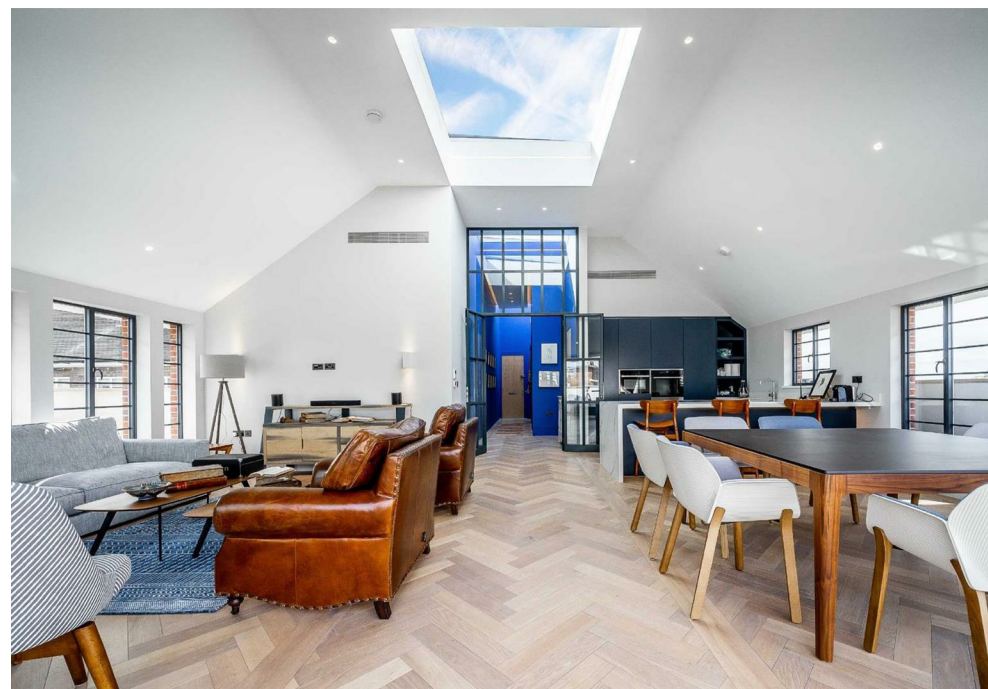
WAYNE
& SILVER

Hamilton Court, London W9 1QR

A beautifully presented three-bedroom penthouse in Hamilton Court, Maida Vale, finished to an exceptional standard. This luxurious, lateral apartment features three en-suite double bedrooms, a guest WC, and a bright open-plan reception leading to a large private terrace with panoramic London views. Additional benefits include lift access, concierge service, and secure private parking.

Beautifully designed with bespoke joinery, marble finishes, Lutron lighting, Miele appliances, and Farrow & Ball décor throughout.

Ideally located less than 0.1 mile from Maida Vale Underground (Bakerloo Line), with Clifton Road's shops and restaurants and Paddington Recreation Ground moments away.



Guide price: £2,850,000

Tenure: Share of Freehold

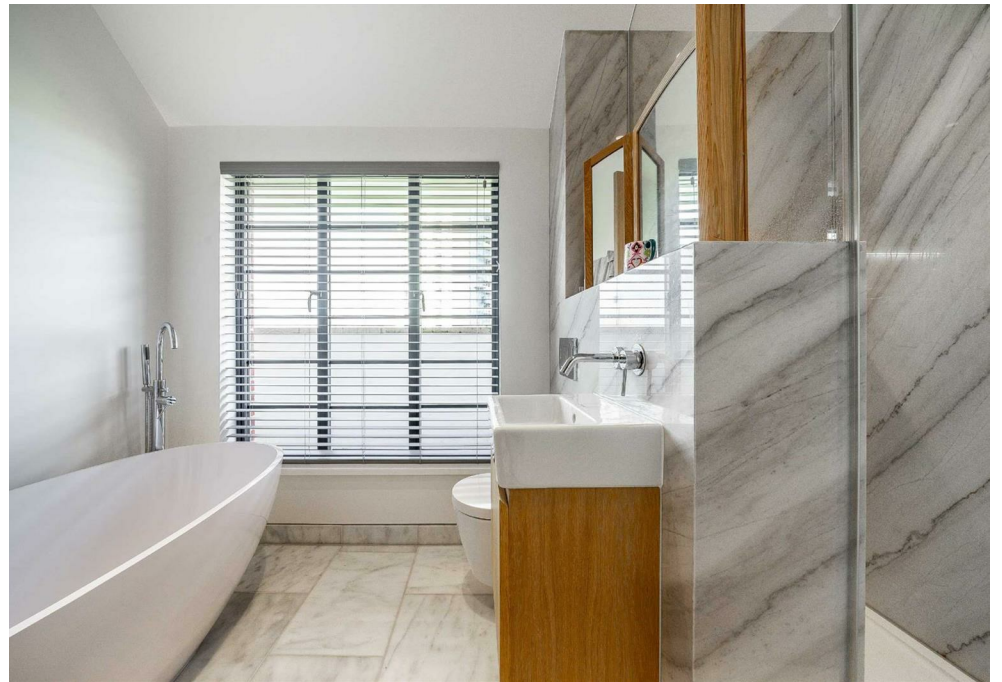
Service Charge: Add text here

Local Authority:

Council Tax Band: G







Hamilton Court, W9

Approximate Gross Internal Area = 1518 sq ft / 141.0 sq m



Illustration for identification purposes only,
measurements are approximate, not to scale. (ID436478)

41 Heath Street
Hampstead
London
NW3 6UA

We would be delighted to tell you more
020 7431 4488
info@wayne-silver.com

wayne-silver.com

Important Notice: Wayne & Silver, its clients and any joint agents give notice that 1: They are not authorised to make or give any representations or warranties in relation to the property either here or elsewhere, either on their own behalf or on behalf of their client or otherwise. They assume no responsibility for any statement that may be made in these particulars. These particulars do not form part of any offer or contract and must not be relied upon as statements or representations of fact. 2: Any areas, measurements or distances are approximate. The text, photographs and plans are for guidance only and are not necessarily comprehensive. It should not be assumed that the property has all necessary planning, building regulation or other consents and Wayne & Silver have not tested any services, equipment or facilities. Purchasers must satisfy themselves by inspection or otherwise.