



LE-ANNE COLEMAN POWERED BY **exp**™ **UK**

@ [leanne.coleman@exp.uk.com](mailto:leanne.coleman@exp.uk.com)

[leannecoleman.exp.uk.com](https://www.leannecoleman.exp.uk.com)

📞 07967 032 978

# Flat 5 Champion Court, 29 Manley Boulevard, Holborough Lakes

Guide Price £275,000

🛏️ 2 🪑 2 🚗 1



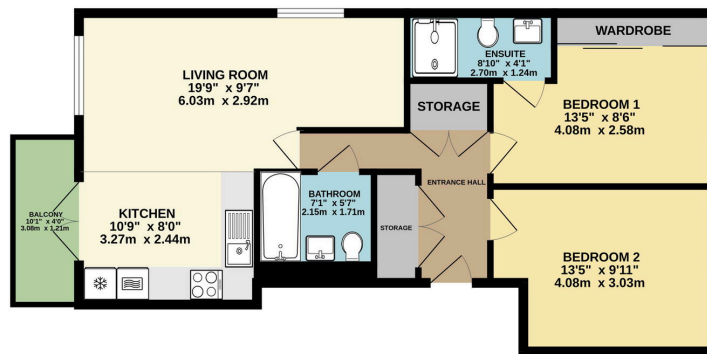
- Stunning Two Bedroom Second Floor Apartment (733 Sq.Ft)
- Beautiful Accommodation with Stylish Interiors
- Private Balcony with Excellent Views
- Residents Gym
- Ofsted Rated "Outstanding" Primary School
- Prime position overlooking the trim trail and village
- Open Plan Reception/Kitchen
- Allocated Parking For Two Cars
- Easy Access Transport Links, Road Routes and Amenities
- Please quote property Reference LC0941



Stunning two double bedroom, two bathroom, second floor apartment (733Sq.Ft) with private balcony and residents parking for two vehicles, ideally situated on the sought after Holborough Lakes development in a prime spot with beautiful views. Offering immaculate accommodation as well as access to superb on-site facilities.



2ND FLOOR  
733 sq.ft. (68.1 sq.m.) approx.



TOTAL FLOOR AREA: 733 sq ft. (68.1 sq.m.) approx.  
While every attempt has been made to ensure the accuracy of the floorplan contained here, measurements of doors, windows, rooms and any other items are approximate and no responsibility is taken for any error, omission or mis-statement. This plan is for illustrative purposes only and should be used as such by any prospective purchaser. The services, systems and appliances shown have not been tested and no guarantee as to their quantity or efficiency can be given.  
Made with Metrepro 12/2018



Energy Efficiency Rating		
	Current	Potential
Very energy efficient - lower running costs		
(92 plus) <b>A</b>		
(81-91) <b>B</b>	83	83
(69-80) <b>C</b>		
(55-68) <b>D</b>		
(39-54) <b>E</b>		
(21-38) <b>F</b>		
(1-20) <b>G</b>		
Not energy efficient - higher running costs		
<b>England &amp; Wales</b>	EU Directive 2002/91/EC	