



£4,200 PCM



CAVENDISH
LETTINGS, SALES & PROPERTY MANAGEMENT

Clenches Farm, Sevenoaks



Bedrooms: 6



Bathrooms: 3



Receptions: 3

- Desirable location
- Garden
- 6 bedrooms & 3 bathrooms
- Parking and single garage
- EPC rating: C
- Council tax band: G

Well presented and deceptively spacious house located in a sought after private road within walking distance of the station and town centre.

The accommodation comprises a large full height entrance hall with balcony, leading to a study, sitting room, family room and fully fitted kitchen, appliances include a gas hob, double oven, fridge freezer and dishwasher. Dining room off the kitchen with doors to the garden. Utility room with washing machine and tumble dryer. Pantry & cloakroom.

On the first floor there is a landing with a balcony landing leading to the master bedroom with an ensuite & walk in dressing room. Second double bedroom with ensuite, third and fourth double bedrooms & family bathroom.

On the second floor there are a further two large additional bedrooms.

OUTSIDE: Garden with patio. Parking for 2 cars and a garage.

Available: 15th May, 2026 Unfurnished

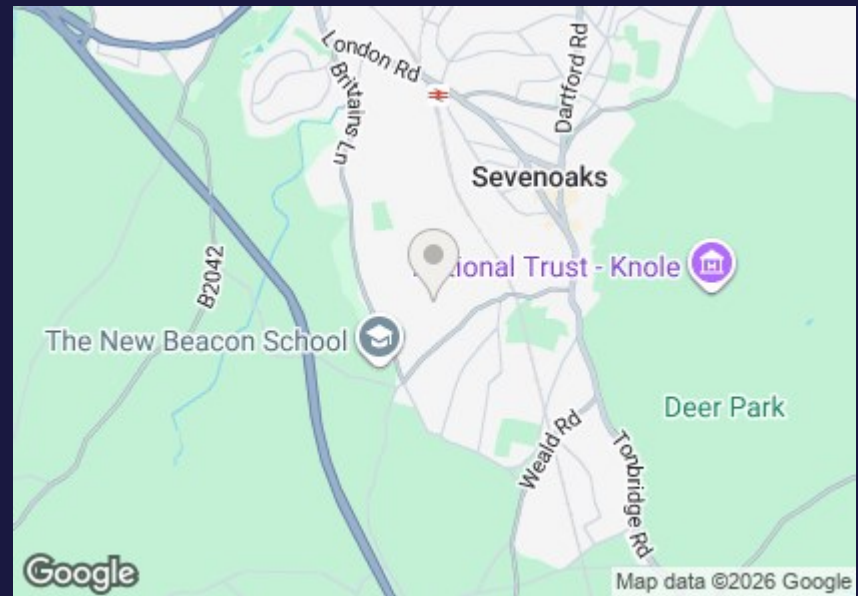
EPC rating: C

Council Tax Band: G

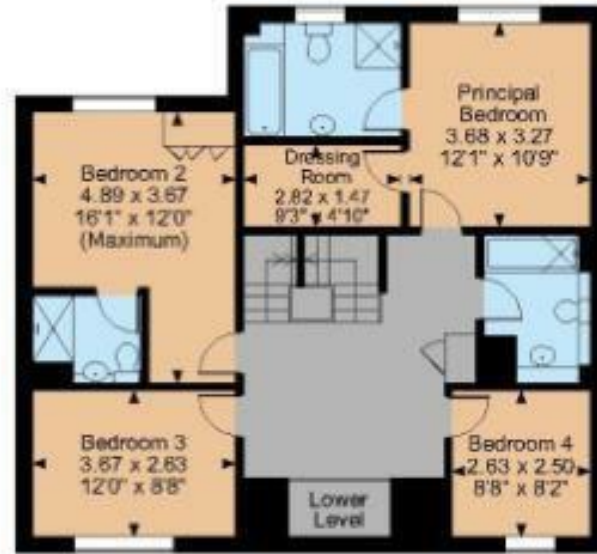
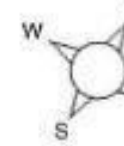
Holding Deposit: £969.00 (1 weeks rent)

Deposit payable: £4,846.00 (5 weeks rent)





Clenches Farm, Clenches Farm Road, Sevenoaks
 Internal area 2,298 sq ft (213 sq m)



nd Floor

First Floor

Second Floor

FOR ILLUSTRATIVE PURPOSES ONLY - NOT TO SCALE

The position & size of doors, windows, appliances and other features are approximate only.

☐☐☐ Denotes restricted head height

© ehouse. Unauthorised reproduction prohibited. Drawing ref. dig/8619330/SS

Energy Efficiency Rating		
	Current	Potential
Very energy efficient - lower running costs		
(92 plus) A		
(81-91) B		
(69-80) C		
(55-68) D		
(39-54) E		
(21-38) F		
(1-20) G		
Not energy efficient - higher running costs		
England & Wales	EU Directive 2002/91/EC	



CAVENDISH
 LETTINGS, SALES & PROPERTY MANAGEMENT

2 - 3 The Shambles
 Sevenoaks
 Kent
 TN13 1LJ
 01732 464498
 mail@cavendish.pro
 www.cavendish.pro