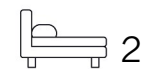




Living
made
better

Serapis House

London City Island, E14 0XL



2



2



1



B

Asking Price £635,000

Serapis House, London City Island, E14 0XL

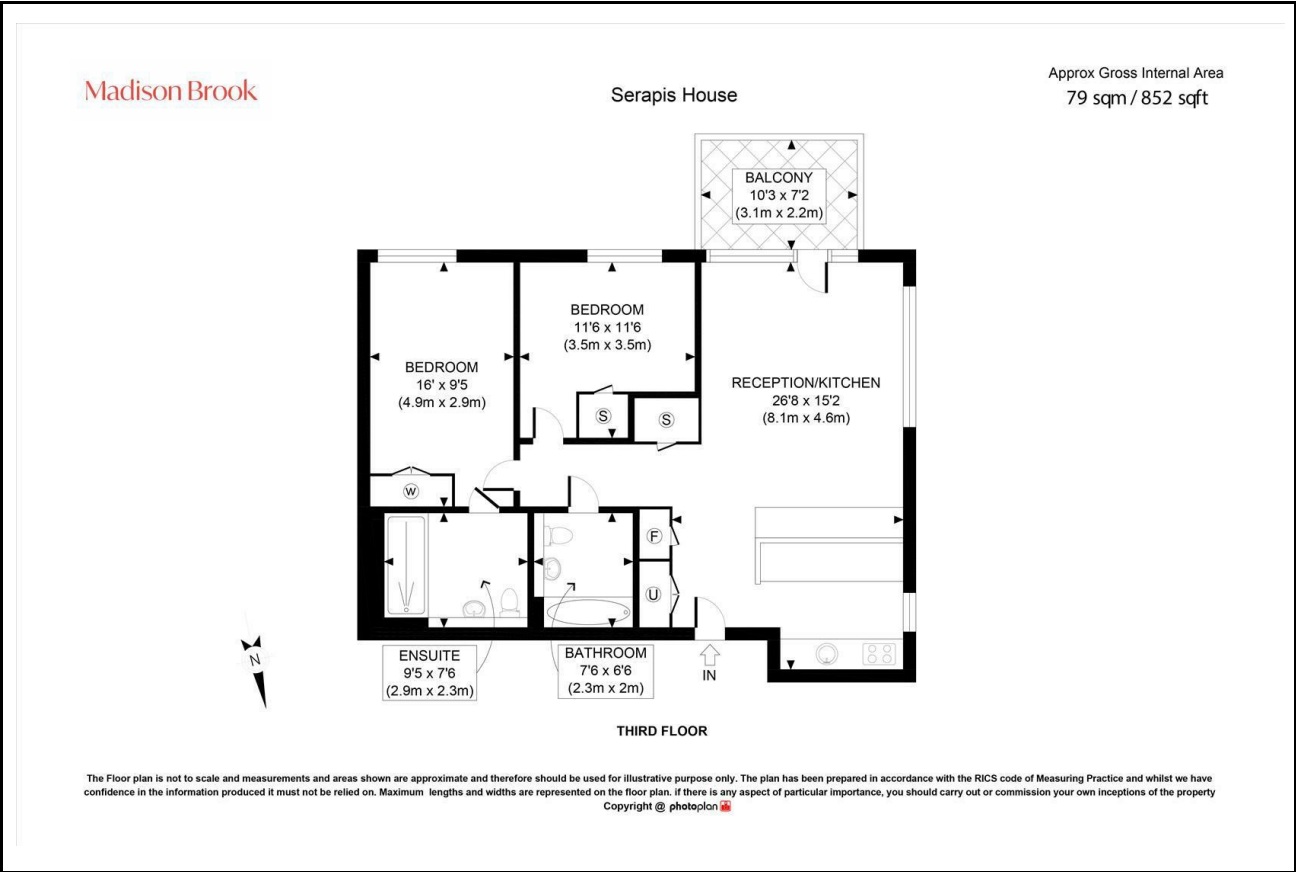
Madison Brook

Property Summary

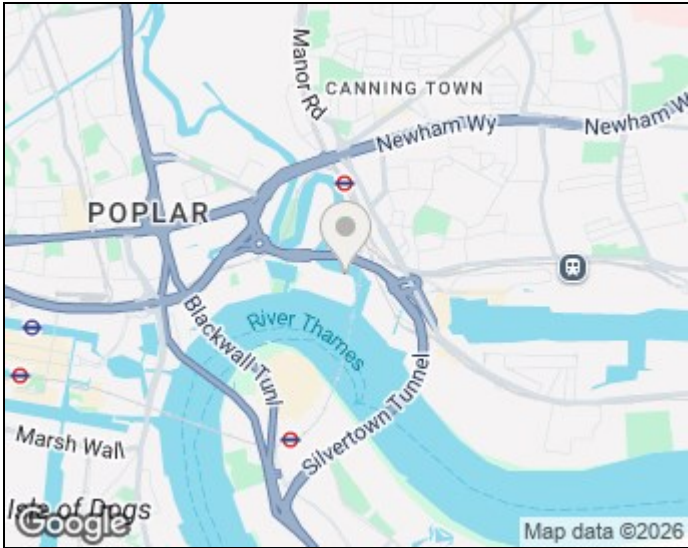
A beautifully finished two-bedroom corner apartment set on the third floor of the prestigious Goodluck Hope development. Spanning 852 sqft, the property boasts an open-plan reception with integrated kitchen, a private balcony with river and partial O2 views, and a principal bedroom with en-suite and fitted wardrobes.

Additional features include a second double bedroom, sleek main bathroom, smart lighting, and bespoke additions like a breakfast bar and wine cooler. Residents enjoy 24hr concierge, gym, pool, cinema room and excellent links via Canning Town Station.

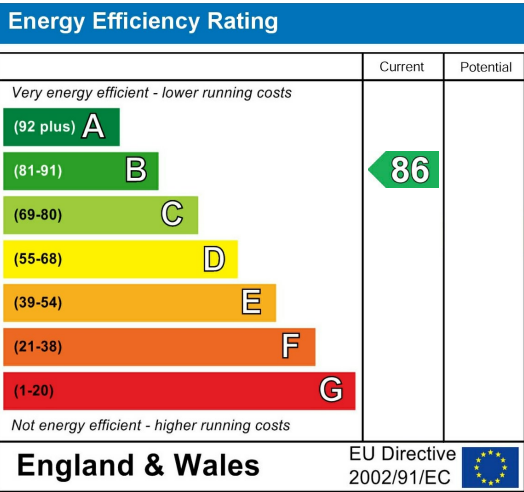
Floorplan



Area Map



Energy Efficiency Graph



These particulars, whilst believed to be accurate are set out as a general outline only for guidance and do not constitute any part of an offer or contract. Intending purchasers should not rely on them as statements of representation of fact, but must satisfy themselves by inspection or otherwise as to their accuracy. No person in this firm's employment has the authority to make or give any representation or warranty in respect of the property.

Unit B 20 Western Gateway, Royal Victoria
Dock, London, E16 1BS
Tel: 020 3946 6000 Email:
docklands@madisonbrook.com
<https://madisonbrook.com/>