

OVER 60?

Secure this property
for up to **59% less!**



Guide Price

£325,000

Freehold

3x  2x  2x 

Morton Road, Brading, Isle of Wight, PO36

Pittis 
Helping you move forwards



Main features

- Beautifully presented bungalow with walled gardens
- Equipped with family bathroom and en suite
- Spacious rooms throughout including conservatory
- Situated on a main bus route
- Perfect bungalow to move straight into

Accommodation

GROUND FLOOR

Hallway

Lounge/Dining Room: 23'3 x 11'8
(7.09m x 3.56m)

Kitchen: 11'7 x 9'9 (3.53m x 2.97m)

Conservatory: 11'7 x 7'9 (3.53m x 2.36m)

Bedroom 1: 11'9 10 x 3'0 (3.58m x 0.92m)

Bedroom 2: 10'8 x 8'9 (3.25m x 2.67m)

Bedroom 3: 9'5 x 8'8 (2.87m x 2.64m)

En Suite Shower Room

Shower Room

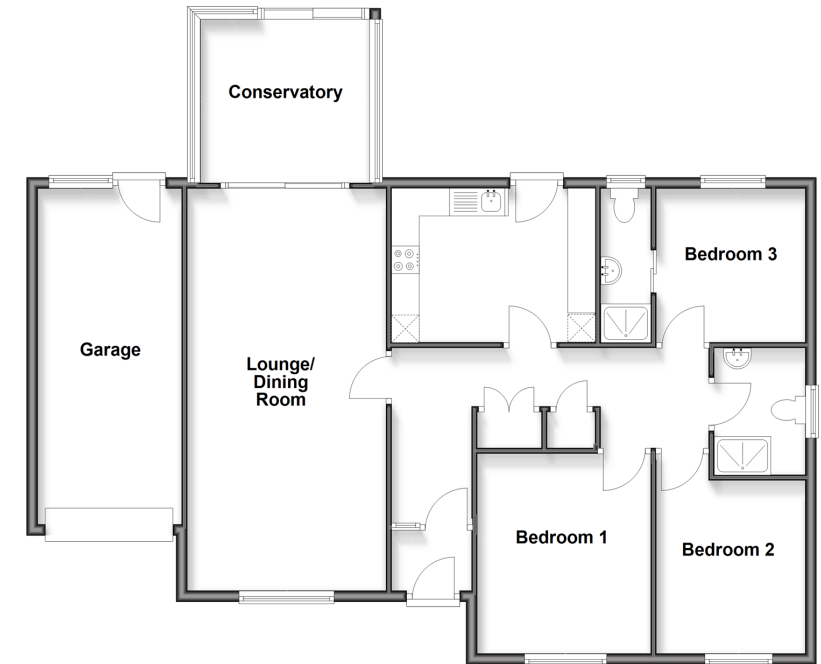
OUTSIDE

Garage & Driveway

Front & Rear Gardens

Ground Floor

Approx. 114.1 sq. metres (1228.2 sq. feet)



Call Sandown - 01983 407444 ■ pittis.co.uk

- Legal advice should be taken to verify fixtures/fittings, planning, alterations and/or lease details
- Appliances & services are untested, dimensions are approximate and floor plans are not to scale
- Through a Homewise Home For Life Plan people aged 60+ can secure this property for up to 59% less, by purchasing a Lifetime Lease



60517579/20260210/BW/JW