



## Tower Road, TW1

£2,200 Per calendar month

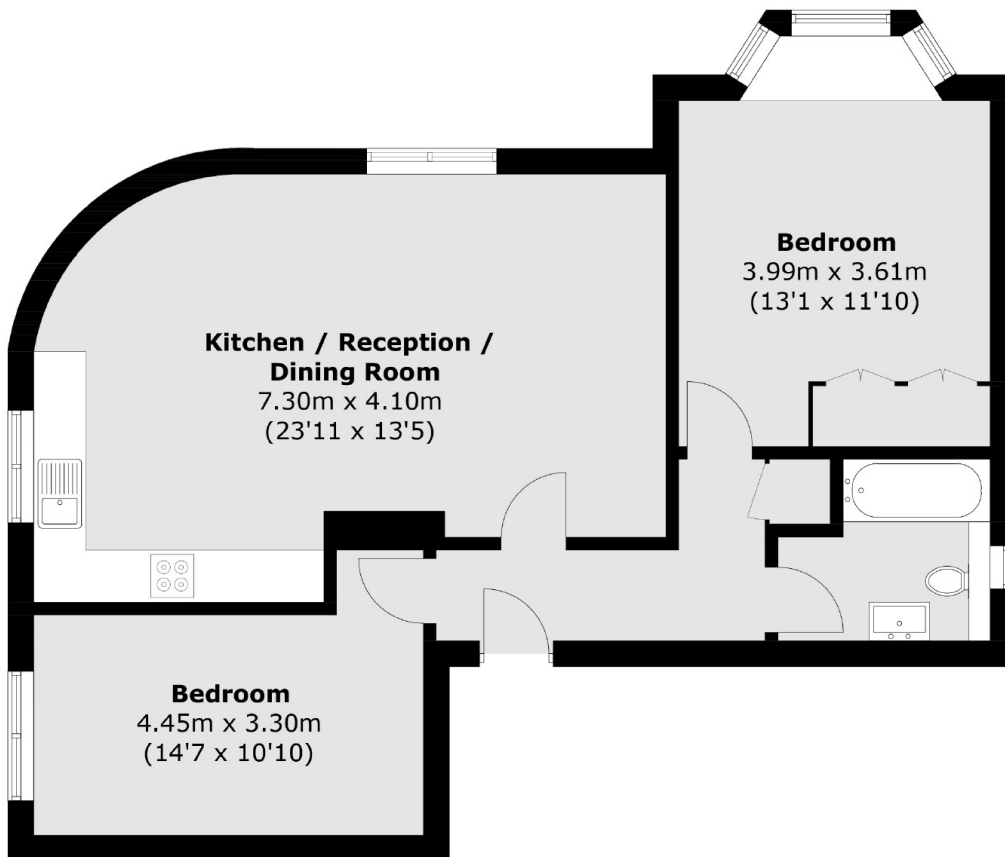
This two bedroom apartment is set in a popular development close to Strawberry Hill station and offers plenty of space, a modern eat-in kitchen and the security of gated off-street parking.

Tower Road is ideally positioned just yards from Strawberry Hill mainline station with its direct link to London Waterloo. The area is conveniently situated for access into Teddington and Twickenham town centres as well as having a number of excellent schools nearby.

### Features

- Two Double Bedrooms
- Eat-In Kitchen
- Off-Street Gated Parking
- Popular Development
- Strawberry Hill Village
- Large Reception Room

# Tower Road, Twickenham, TW1



Total area (approx.): 71.8 sq. m (772.8 sq. ft)

**Dexters**

Twickenham  
84 Heath Road  
Twickenham  
TW1 4BW  
Lettings  
020 8744 2233

Energy Rating: C. We aim to make our particulars both accurate and reliable. However they are not guaranteed; nor do they form part of an offer or contract. If you require clarification on any points then please contact us, especially if you're traveling some distance to view. Please note that appliances and heating systems have not been tested and therefore no warranties can be given as to their good working order.

 **RICS** | Regulated  
Estate Agent  
and Letting Agent

[dexters.co.uk](http://dexters.co.uk)