



**Guide Price**  
**£325,000**

**Freehold**

3x  1x  1x 

**Stopford Road,  
Gillingham, Kent, ME7**

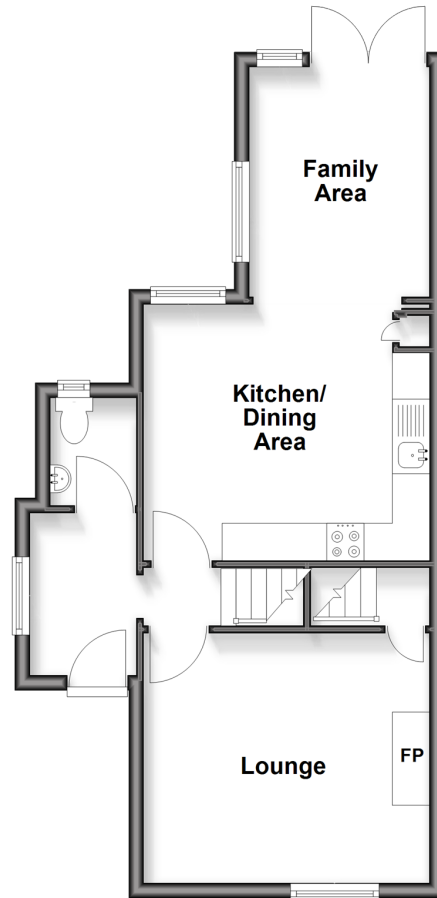
**OVER 60?**

Secure this property  
for up to **59% less!**

*Wards*  
Helping you move forwards

### Ground Floor

Approx. 42.9 sq. metres (461.6 sq. feet)



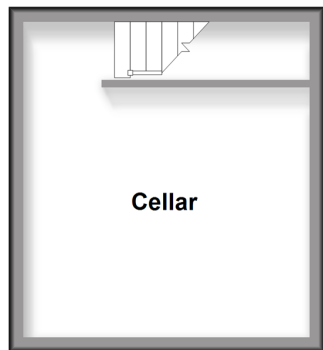
### First Floor

Approx. 40.9 sq. metres (440.0 sq. feet)



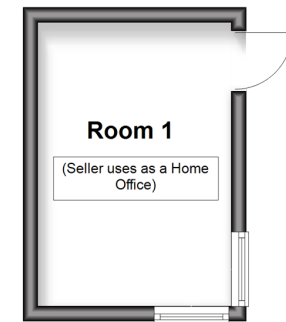
### Basement

Approx. 16.3 sq. metres (175.2 sq. feet)



### Outbuilding

Approx. 0.0 sq. metres (0.0 sq. feet)  
(excluding Room 1)



## Accommodation

### GROUND FLOOR

Entrance Hall

Lounge: 12'6 x 11'3 (3.81m x 3.43m)

Kitchen/Dining Area: 12'5 x 11'6 (3.79m x 3.51m)

Family Area: 9'11 x 7'10 (3.02m x 2.39m)

Cloakroom

### BASEMENT

Cellar: 12'8 x 8'5 (3.86m x 2.57m)

### FIRST FLOOR

Landing

Bedroom 1: 12'5 x 11'4 (3.79m x 3.46m)

Bedroom 2: 11'6 x 9'3 (3.51m x 2.82m)

Jack & Jill En-suite

Bedroom 3: 10'0 x 8'2 (3.05m x 2.49m)

### OUTBUILDING

Home Office: 12'8 x 8'5 (3.86m x 2.57m)

### OUTSIDE

Front Garden

Rear Garden



## Main features

- Beautifully refurbished, great to move straight into
- Upstairs bathroom and downstairs separate toilet
- Gas central heating and double glazing
- Large rear garden with outbuilding
- Popular Upper Gillingham location



### Nearest Schools

Primary Schools: Byron Primary 0.2 miles, Napier Community Primary and Nursery School 0.3 miles, Barnsole Junior School 0.7 miles

Secondary Schools: Brompton Academy 0.7 miles,



### Transport Information

Train Stations: Gillingham 0.7 miles, Chatham 1.9 miles, Rochester 2.5 miles



### Address

Stopford Road, Gillingham, Kent, ME7



### Directions

For directions to this property please contact us.



**Wards**  
Helping you move forwards

Call Gillingham Branch 01634 851191 ■ [wardsofkent.co.uk](http://wardsofkent.co.uk)



**Unable to display material information. Please check with the branch for material information details for this property**



11025240/20260417/HF/HF