



Rutherford Crescent, Leighton Buzzard, LU7 3GF

welcome to

Rutherford Crescent, Leighton Buzzard

A fantastic opportunity to acquire this stylish THREE-bedroom, SEMI-DETACHED family home with a PRIVATE, landscaped garden and off-street parking.

Entrance Hall

Double-glazed door to the front and stairs to the first floor.

Cloakroom

Wash hand basin and low-level WC, and integrated washing machine.

Lounge

Radiator and double-glazed window to the front.

Kitchen/Diner

Fitted with a mix of wall and base units with work surface over, sink with drainer, electric oven and gas hob with extractor fan over. Integrated dishwasher and fridge/freezer. Double-glazed window to the rear and double-glazed door leading out to the garden.

First Floor Landing

Stairs from the ground floor and stairs to the second floor. Doors to bedrooms two and three plus the family bathroom.

Bedroom Two

Radiator and double-glazed window to the rear.

Bedroom Three

Radiator and double-glazed window to the front.

Bathroom

Partially tiled with a wash hand basin, low-level WC and a bath with mixer tap. Shaver point and extractor fan.

Second Floor Landing

Stairs from the first floor and door to bedroom one.

Bedroom One

Radiator and a velux style window to the rear. Double-glazed window to the front.

En-Suite

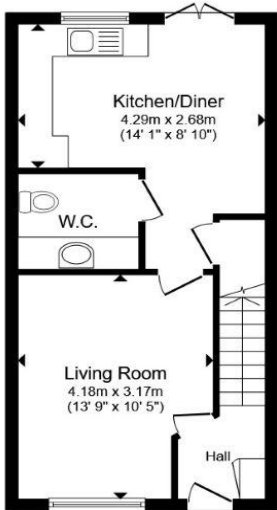
Tiled with a wash hand basin, low-level WC and a shower cubicle. Extractor fan and double-glazed obscured window to the rear.

Outside Rear Garden

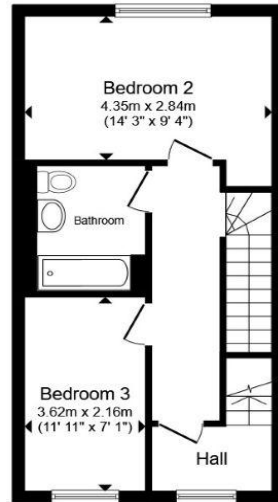
A private enclosed rear garden with a paved patio area and gated side access.

Parking

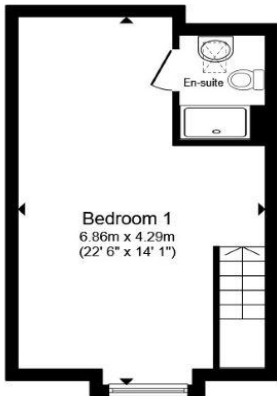
There is allocated parking for 2 cars.



Ground Floor



First Floor



Second Floor

Total floor area 103.9 m² (1,119 sq.ft.) approx

This floor plan is for illustrative purposes only. It is not drawn to scale. Any measurements, floor areas (including any total floor area), openings and orientation are approximate. No details are guaranteed, they cannot be relied upon for any purpose and they do not form part of any agreement. No liability is taken for any error, omission or misstatement. A party must rely upon its own inspection(s). Powered by www.propertybox.io



welcome to
Rutherford Crescent,
Leighton Buzzard

- MODERN FAMILY HOME
- WELL PRESENTED THROUGHOUT
- LOW MAINTENANCE GARDEN
- AMPLE OFF ROAD PARKING
- KITCHEN/DINER

Tenure: Freehold EPC Rating: B
Council Tax Band: D

guide price

£375,000



view this property online [brownandmerry.co.uk/Property/LBZ109686](https://www.brownandmerry.co.uk/Property/LBZ109686)



Property Ref:
LBZ109686 - 0007

1. MONEY LAUNDERING REGULATIONS Intending purchasers will be asked to produce identification documentation at a later stage and we would ask for your co-operation in order that there is no delay in agreeing the sale. 2. These particulars do not constitute part or all of an offer or contract. 3. The measurements indicated are supplied for guidance only and as such must be considered incorrect. Potential buyers are advised to recheck measurements before committing to any expense. 4. We have not tested any apparatus, equipment, fixtures or services and it is in the buyers interest to check the working condition of any appliances. 5. Where an EPC, or a Home Report (Scotland only) is held for this property, it is available for inspection at the branch by appointment. If you require a printed version of a Home Report, you will need to pay a reasonable production charge reflecting printing and other costs. 6. We are not able to offer an opinion either written or verbal on the content of these reports and this must be obtained from your legal representative. 7. Whilst we take care in preparing these reports, a buyer should ensure that his/her legal representative confirms as soon as possible all matters relating to title including the extent and boundaries of the property and other important matters before exchange of contracts.

Brown & Merry is a trading name of Sequence (UK) Limited which is registered in England and Wales under company number 4268443, Registered Office is Cumbria House, 16-20 Hockliffe Street, Leighton Buzzard, Bedfordshire, LU7 1GN. VAT Registration Number is 500 2481 05.

brown & merry



01525 372021



LeightonBuzzard@brownandmerry.co.uk



17 High Street, LEIGHTON BUZZARD,
Bedfordshire, LU7 1DT



[brownandmerry.co.uk](https://www.brownandmerry.co.uk)