



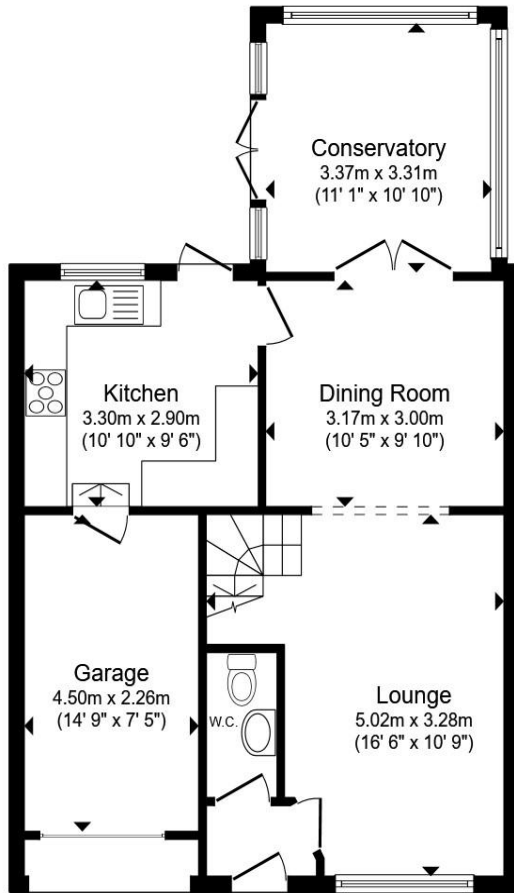
**Harper Drive, Maidenbower Crawley RH10 7LD**

**welcome to**

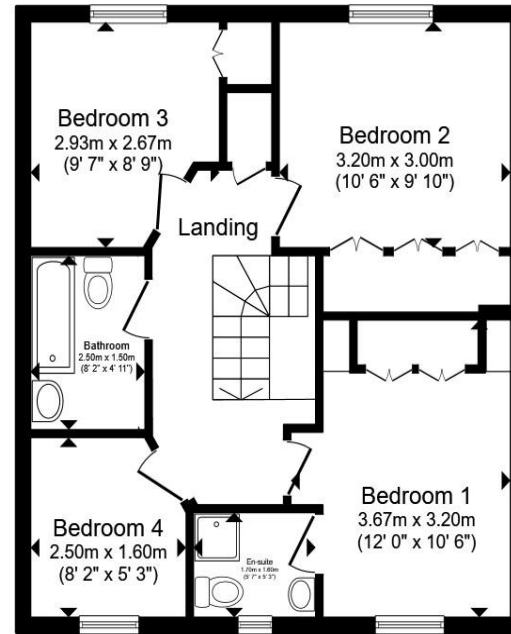
**Harper Drive, Maidenbower Crawley**

Well-presented four-bedroom detached home in a sought-after Crawley location. Offering a spacious lounge/diner, modern kitchen, conservatory, en-suite to the master, driveway and garage, plus a generous garden. Ideally placed for schools, parks, amenities and transport links.





**Ground Floor**



**First Floor**

Total floor area 116.3 m<sup>2</sup> (1,252 sq.ft.) approx

This floor plan is for illustrative purposes only. It is not drawn to scale. Any measurements, floor areas (including any total floor area), openings and orientation are approximate. No details are guaranteed, they cannot be relied upon for any purpose and they do not form part of any agreement. No liability is taken for any error, omission or misstatement. A party must rely upon its own inspection(s). Powered by [www.propertybox.io](http://www.propertybox.io)



welcome to

## Harper Drive, Maidenbower Crawley

- Four-bedroom detached family home
- Excellent, modern condition throughout
- Spacious through lounge/diner
- Light-filled conservatory opening to rear garden
- Downstairs WC

Tenure: Freehold EPC Rating: A  
Council Tax Band: E

**£625,000**



### Property Description

Presented to the market in excellent, modern condition, this impressive four-bedroom detached house occupies a prime position in Crawley, perfect for families and those seeking abundant living space. The property opens with a welcoming entrance, leading into a spacious through lounge/diner—ideal for relaxing evenings or entertaining guests. The light-filled conservatory seamlessly connects to the generous rear garden, creating the perfect space for indoor-outdoor living.

To the rear of the house, there is a modern, well-appointed kitchen complemented by a convenient downstairs WC.

Upstairs, four good-sized bedrooms await, including a master suite with its own private en-suite bathroom. Each room is perfectly finished with thoughtfully designed features, ensuring comfort and style throughout this wonderful home.

Practicality blends with kerb appeal, with a private driveway and integral garage providing ample parking. The substantial rear garden is ideal for children to play, al fresco dining, or simply enjoying some restorative peace and quiet amongst the greenery.

This location offers superb access to nearby Oriel High Oaks and the lush expanses of Maidenbower Park—ideal for dog walks, weekend strolls, or outdoor activities. With easy connections to local amenities, excellent schools, and convenient transport links throughout Crawley, the property is perfectly positioned for all aspects of modern family life.



Please note the marker reflects the postcode not the actual property

view this property online [fox-and-sons.co.uk/Property/CRA112015](https://fox-and-sons.co.uk/Property/CRA112015)



Property Ref:  
CRA112015 - 0002

1. MONEY LAUNDERING REGULATIONS Intending purchasers will be asked to produce identification documentation at a later stage and we would ask for your co-operation in order that there is no delay in agreeing the sale. 2. These particulars do not constitute part or all of an offer or contract. 3. The measurements indicated are supplied for guidance only and as such must be considered incorrect. Potential buyers are advised to recheck measurements before committing to any expense. 4. We have not tested any apparatus, equipment, fixtures or services and it is in the buyers interest to check the working condition of any appliances. 5. Where an EPC, or a Home Report (Scotland only) is held for this property, it is available for inspection at the branch by appointment. If you require a printed version of a Home Report, you will need to pay a reasonable production charge reflecting printing and other costs. 6. We are not able to offer an opinion either written or verbal on the content of these reports and this must be obtained from your legal representative. 7. Whilst we take care in preparing these reports, a buyer should ensure that his/her legal representative confirms as soon as possible all matters relating to title including the extent and boundaries of the property and other important matters before exchange of contracts.

Fox & Sons is a trading name of Sequence (UK) Limited which is registered in England and Wales under company number 4268443, Registered Office is Cumbria House, 16-20 Hockliffe Street, Leighton Buzzard, Bedfordshire, LU7 1GN. VAT Registration Number is 500 2481 05.

  
fox & sons



**01293 520521**



Crawley@fox-and-sons.co.uk



34 High Street, CRAWLEY, West Sussex, RH10 1BW



**fox-and-sons.co.uk**