

Olympic Park Avenue, London E20

£850,000 Leasehold







Description

Nestled within the prestigious Chobham Manor development, this rare-to-the-market penthouse apartment offers an unparalleled living experience overlooking the iconic Queen Elizabeth Olympic Park. With its elevated position, the property is defined by its remarkable panoramic views that stretch across the London skyline, encompassing Canary Wharf and The City.

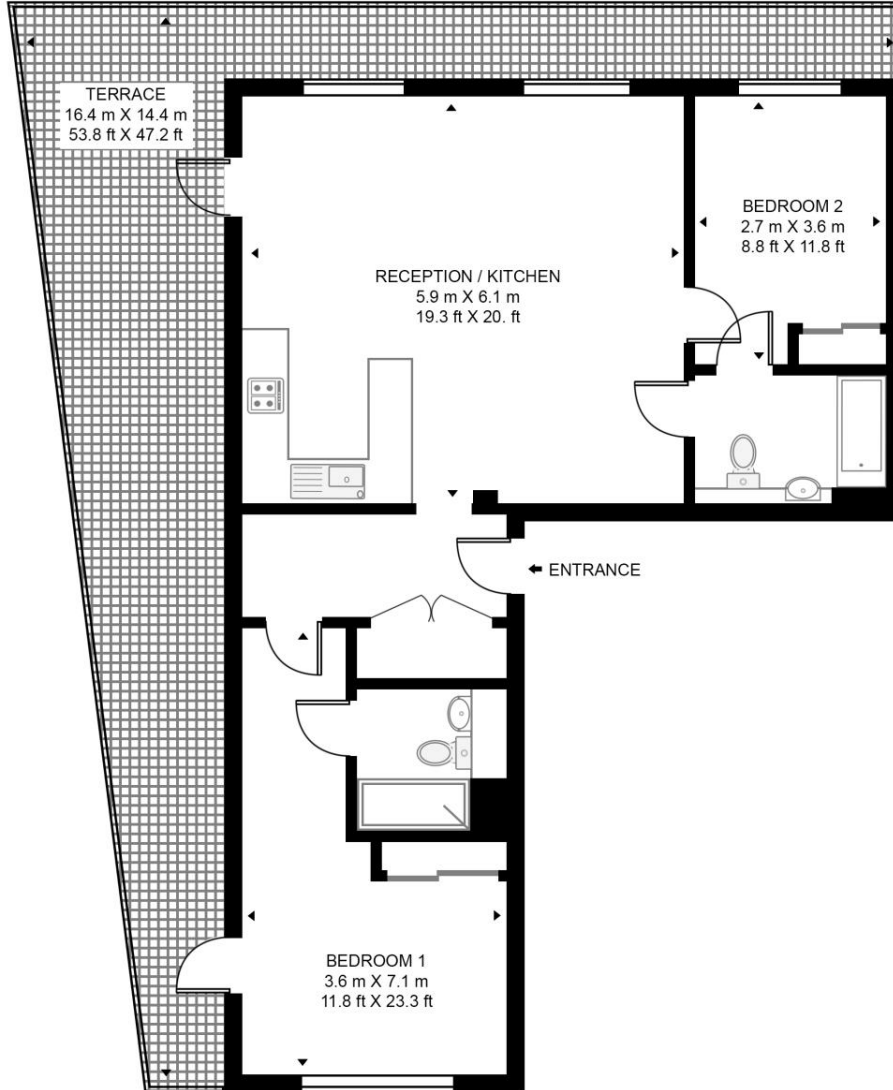
The heart of this home is the triple-aspect living area, which is bathed in natural light throughout the day. This incredible space features a state-of-the-art, fully integrated kitchen and flows seamlessly onto a magnificent wrap-around private terrace. With an exceptionally large area perfect for entertaining, this outdoor oasis provides a spectacular backdrop for hosting guests or simply enjoying the impressive cityscape.

- Stunning penthouse apartment
- Expansive wrap around terrace
- Panoramic skyline views
- Two double bedrooms
- Two modern bathrooms
- Private underground parking
- Triple aspect living space
- Prime Olympic Park location
- High specification kitchen
- Secure Chobham Manor development

Floorplan

895 sq ft | 83 sq m

CRITERIUM HOUSE, OLYMPIC PARK AVENUE
APPROXIMATE GROSS INTERNAL FLOOR AREA 895 SQ.FT (83.2 SQ.M)



FIFTH FLOOR



This floor plan has been defined by the RICS Code of Measurement. This floor plan and all others are for approximate representative purposes only and upon usage is agreed to as such by the client.

WWW: hdvirtualart.com | TEL: 0203.974.1567 | EMAIL: info@hdvirtualart.com

Stratford
5 Station Street,
London E15 1DA
+4420 3147 1500
Lettingsstratford@eu.jll.com

Urban living, your way.

jll.co.uk/residential

© 2019 Jones Lang LaSalle IP, Inc. All rights reserved. All information contained herein is from sources deemed reliable; however, no representation or warranty is made to the accuracy thereof.

