



Ibbett Mosely

Anvil House Station Road, Eynsford,
Dartford, DA4 0EW



Anvil House Station Road, Eynsford, Dartford, DA4 0EW

AN EXCEPTIONAL 4 BEDROOM DETACHED FAMILY HOUSE SITTING IN THE VERY HEART OF THE VILLAGE IN WALKING DISTANCE TO STATION - NO ONWARD CHAIN £895,000

- Master Bedroom with En Suite Bathroom
- 3 Further Bedrooms
- 2 Reception Rooms
- Cloakroom
- Kitchen
- 2 Bathrooms
- Garage & Off Road Parking
- Landscaped Garden
- Underfloor heating to Ground Floor
- VIEWING HIGHLY RECOMMENDED

AN EXCEPTIONAL PROPERTY SITTING IN THE HEART OF THE VILLAGE IN WALKING DISTANCE TO STATION - NO ONWARD CHAIN £895,000

DESCRIPTION

As Sole Agents we are delighted to present this exceptional property sitting in the very heart of the village and in walking distance to Eynsford Station. The accommodation is arranged over two floors with a light and airy Sitting Room overlooking the rear garden, Dining Room and well designed Kitchen on the Ground Floor. A Master Bedroom with En Suite on the First Floor together with 3 further Bedrooms. Anvil House is extremely well presented and has been designed with great thought and attention to detail. The rear garden is a true feature of the property with a large patio area providing a perfect setting for outdoor entertaining. Steps lead down to a well maintained lawn surrounded by a variety of shrubs. There is an attached Garage with additional space for off road parking. With NO ONWARD CHAIN we strongly recommend early viewing to fully appreciate all that Anvil House has to offer.

LOCATION

Eynsford has a thriving village community, many period

properties, castle ruins, local shops, churches, restaurants, village general store and butcher. Close by is the highly regarded Anthony Roper school. Sitting at the foot of the picturesque Darenth Valley. Eynsford Station is close by offering services to London on the London Bridge/Charing Cross Line and onto London/ Victoria. There is a bus service to a number of Secondary and Grammar schools and there are a number of activities available to all age groups in the village. For those who enjoy outdoor pursuits many walks and a golf course close by. Almost 7 miles away is the popular Bluewater Complex offering a wide range of shopping facilities, sports/cinema and restaurants. There is easy access to the M25 and M20 motorways and Sevenoaks Town Centre is only a few miles away with a wide range of shops, restaurants, cinema/theatre complex and a mainline station with fast services to London on the London Bridge/Charing Cross line and into London/Victoria.

ENTRANCE

Through solid front door into.....

ENTRANCE HALL

Small double glazed Georgian style window to front. Engineered oak flooring. Staircase leading to first floor with understairs cupboard. Down lightin.

CLOAKROOM

Small double glazed Georgian style window to front. Vanity unit with wash had basin inset. WC. Tiled floor. Down lighting. Vertical radiator.

SITTING ROOM

Double glazed bi fold doors leading out onto the Patio. Feature gas fire inset. Television point. Down lighting. Opening into:

DINING ROOM

Double glazed Georgian style window to side. Down lighting.

KITCHEN

Double glazed window and door to rear. Velux ceiling window which is electronically operated. Comprehensive range of wall and base units with granite work surfaces. Stainless steel sink unit with mixer tap. Built in double oven. 4 ring induction hob with extractor over. Integrated dish washer and American style fridge/freezer. All appliances are Siemens brand. Personal door leading to Garage.

FIRST FLOOR

LANDING

Airing cupboard. Access to loft.

MASTER BEDROOM

Double glazed Georgian style window to front with timber shutters. Fitted bedside cupboard units. Door leading to a range built in wardrobes. Down lighting, Door leading to:

EN SUITE BATHROOM

Double glazed Georgian style window to side. Walk in fully tiled shower cubicle. Panelled bath with mixer tap. Vanity unit with wash hand basin inset. WC. Tiled floor. Down Lighting.

BEDROOM/STUDY

Double glazed window to front. Radiator.

BEDROOM

Double glazed window to rear with timber shutters. Down lighting. Radiator.

BEDROOM

Double glazed window to rear with timber shutters. Down lighting. Radiator.

FAMILY BATHROOM

Double glazed Georgian style window to side. Panelled bath. Vanity unit with wash hand basin inset. WC. Vertical radiator. Down lighting.

OUTSIDE

FRONT

Space for off road parking.

ATTACHED GARAGE

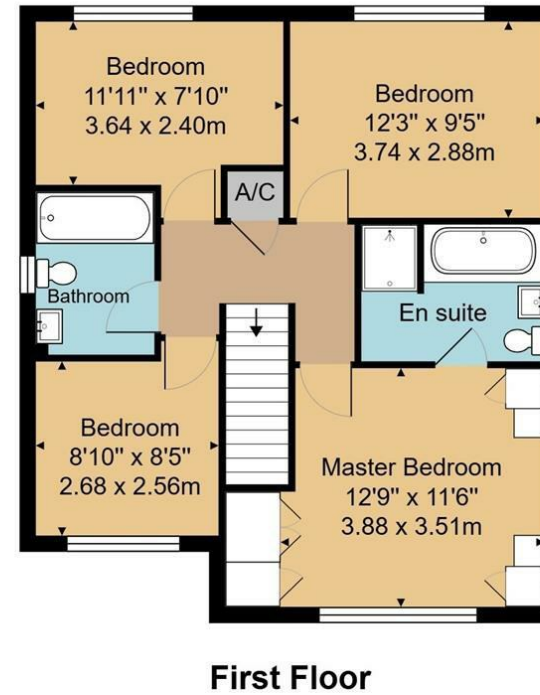
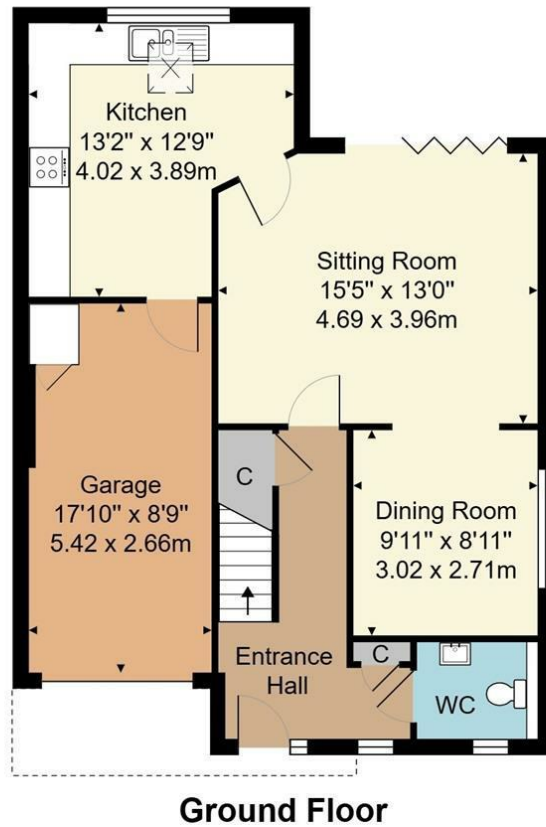
Electronically operated by remote control up and over door. Light and power. Personal door to Kitchen.

REAR GARDEN

In our opinion the rear garden is a true feature of Anvil House. A spacious decked patio providing a perfect setting for outdoor entertaining. Steps leading down to a well maintained lawn surrounded by a variety of shrubs and trees.



Approx. Gross Internal Area 1402 ft² ... 130.3 m²
(Includes Garage)



Whilst every attempt has been made to ensure the accuracy of the floor plan contained here, measurements of doors, windows, rooms and any other items are approximate and no responsibility is taken for any error, omission, or mis-statement. This plan is for illustrative purposes only and should be used as such by any prospective purchaser or tenant. The services, systems and appliances shown have not been tested and no guarantee as to their operability or efficiency can be given.

Ibbett Mosely

Otford 01959 522164

Offices at - BOROUGH GREEN - OTFORD - SEVENOAKS - SOUTHWARK
TONBRIDGE - WESTMINSTER - WESTERHAM - WEST MALLING

www.ibbettmosely.co.uk