

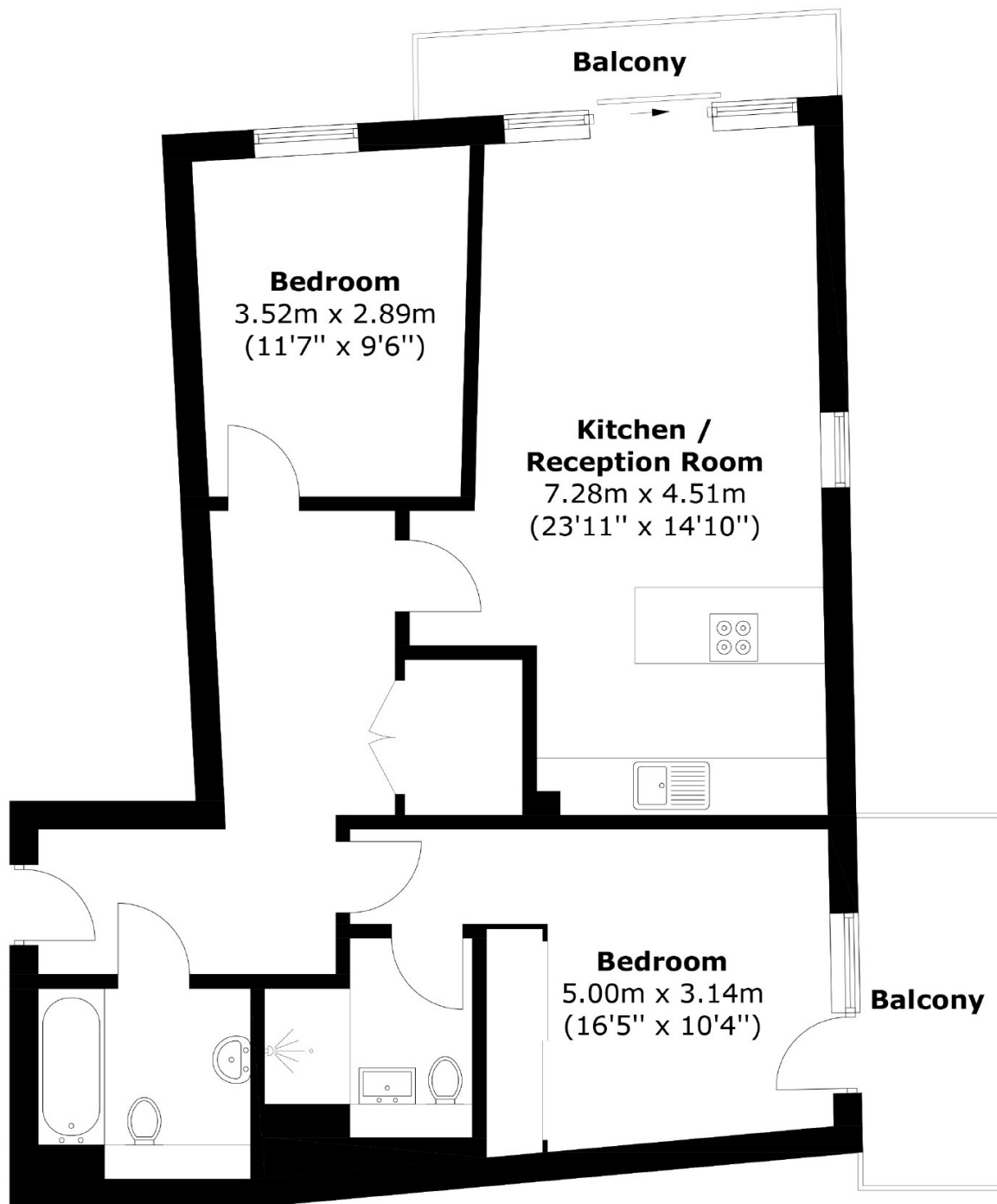


## Upper North Street, E14

£2,250 Per month

 2  1  2  B

- Two Double Bedrooms
- Two Bathroom
- Two Balconies
- Parking Available
- Wooden Flooring
- Concierge



## Second Floor

Total area: Approx. 76.4 sq. meters (822.4 sq. feet)  
 Plus Balcony, approx. 9.5 sq. meters (102.2 sq. feet)

35A Wapping High Street,  
 London, E1W 1NR  
 020 7702 3456  
[ea2group.com](http://ea2group.com)