



**Haslemere Road, Liphook, Hampshire, GU30 7UN.**  
**Price from £360,000 Leasehold.**

CLARKE  GAMMON

FLORA PLACE HASLEMERE ROAD  
LIPHOOK HAMPSHIRE GU30 7UN

Prices from £360,000 Leasehold.

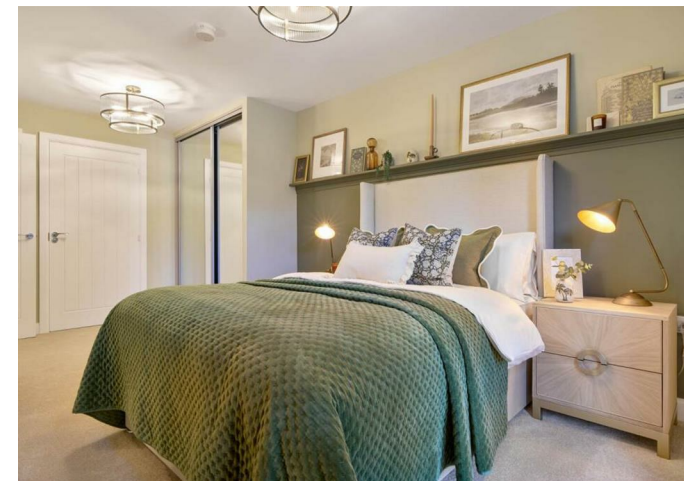
Retirement property for sale	Beautiful, energy saving, low maintenance over 60s
Stunning communal lounge	Guest suite
Lovely sociable shared landscaped gardens	amenities on the doorstep
spectacular 1 bedroom apartment in Liphook,	Pets allowed
24/7 call system	



**A fantastic opportunity to buy a brand-new retirement apartment in the centre of Liphook Village.**

**THE PROPERTY - all photos are just an insight to the quality.**

This spectacular 1 bedroom apartment in Liphook, Hampshire is part of the Flora Place development from the award-winning McCarthy Stone. A private retirement apartment, Apartment 32 is located on the second floor, is low-maintenance and contains extra safety features. See the exclusive benefits and highlights this property has to offer in the development information.



## Location

Flora Place is just a few minutes stroll from the historic village square, which is dominated by the Royal Anchor Hotel and is a designated conservation area with some of the old houses and shops dating as far back as the 16th century. Liphook offers the best of country living with the convenience of amenities such as a bank, village surgery, a supermarket, post office and bus stop. There will be plenty to tickle your tastebuds with a mix of traditional pubs, small cafés and restaurants.

Retirement property for sale and retirement properties to rent in Liphook  
Countryside living in the South Downs National Park with amenities on the doorstep  
Beautiful, energy saving, low maintenance over 60s retirement housing for stress-free living  
Dedicated manager onsite during office hours to help keep everything running smoothly

Village centre location  
Sainsburys walkable  
Doctor's Surgery walkable  
Liphook main line station easy access  
Haslemere 5 miles  
Petersfield 8 miles  
Guildford 14 miles  
Portsmouth 28 miles

All distances approximate

18  
559.10 SQFT  
51.94 SQM



Bedroom (Max)	5441mm x 2800mm	17.85 ft x 9.19 ft
Kitchen (Max)	3275mm x 2460mm	10.74 ft x 8.07 ft
Living (Max)	4443mm x 3853mm	14.58 ft x 12.64 ft
Shower Room (Max)	2200mm x 1950mm	7.22 ft x 6.40 ft

LOCAL AUTHORITY  
East Hants District Council

SERVICES  
All Main Services

16th June 2026

Energy Efficiency Rating		
	Current	Potential
Very energy efficient - lower running costs		
(92 plus) <b>A</b>		
(81-91) <b>B</b>		
(69-80) <b>C</b>		
(55-68) <b>D</b>		
(39-54) <b>E</b>		
(21-38) <b>F</b>		
(1-20) <b>G</b>		
Not energy efficient - higher running costs		
<b>England &amp; Wales</b>	EU Directive 2002/91/EC	

**CG LIPHOOK OFFICE**

2 MIDHURST ROAD, LIPHOOK, HAMPSHIRE, GU30 7ED

T: 01428 728900

E: [liphook.sales@clarkegammon.co.uk](mailto:liphook.sales@clarkegammon.co.uk)

[clarkegammon.co.uk](http://clarkegammon.co.uk)

**AGENT'S NOTE**

Whilst we endeavour to make our sales particulars accurate and reliable, we wish to inform prospective purchasers that we have not carried out a detailed survey, nor tested the services, appliances and specific fittings. If there is any point which you would like to have further clarification upon, please contact this office.

ESTATE AGENTS CHARTERED SURVEYORS VALUERS LETTINGS AUCTIONEERS

GUILDFORD OFFICE  
T: 01483 880 900

HASLEMERE OFFICE  
T: 01428 664 800

LIPHOOK OFFICE  
T: 01428 728 900

MAYFAIR OFFICE  
T: 0870 112 7099

AUCTION ROOMS  
T: 01483 223101

