



Barcombe Avenue, SW2

£399,000

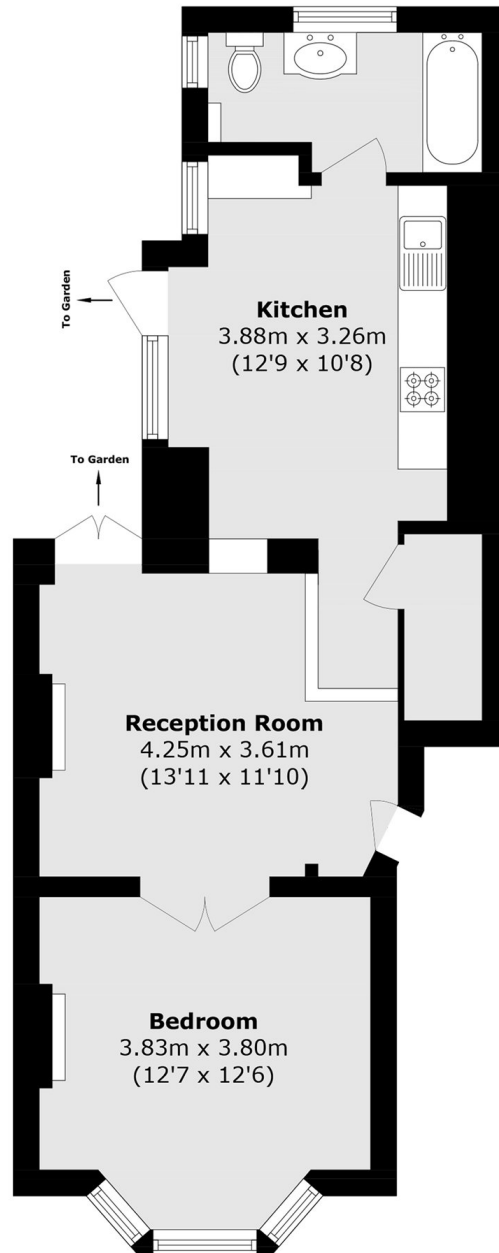
In great condition throughout is this one double bedroom period conversion. Sold with a share in the freehold, this home has a private garden, eat-in kitchen and spacious bathroom. The bedroom features the bay window and feature fireplace.

Barcombe Avenue forms part of the conservation area known locally as the ABCD roads. It is located close to Streatham Hill Overground Station which offers rail links to London Victoria (via Clapham Junction) and London Bridge, popular local schools and nurseries as well as a range of local shops, and a selection of local bars and restaurants. Brixton (Victoria Line) can be accessed via one of the many bus routes which run from Streatham Hill.

Features

- Private Garden
- Chain Free
- Share of Freehold
- Open-Plan Living
- Great Location
- Eat-in Kitchen

Barcombe Avenue, London, SW2



Total area (approx.): 51.9 sq. m (558.6 sq. ft)

Dexters

Streatham
105 Streatham Hill
London
SW2 4UG
Sales
020 8674 7400

Energy Rating: D. We aim to make our particulars both accurate and reliable. However they are not guaranteed; nor do they form part of an offer or contract. If you require clarification on any points then please contact us, especially if you're traveling some distance to view. Please note that appliances and heating systems have not been tested and therefore no warranties can be given as to their good working order.

 **RICS** | Regulated
Estate Agent
and Letting Agent

[dexters.co.uk](https://www.dexters.co.uk)