



- A well presented two bedroom mid terrace home
- Extended lounge leading into kitchen/dining room
- Walking distance to local shops and schools
- Two double bedrooms and a first floor bathroom
- Fully enclosed, low maintenance rear garden
- Offered for sale with no onward chain



***'A smart and well presented two bedroom terrace home which enjoys a fully enclosed garden and has a garage in a nearby block!'***

This two bedroom mid terraced home enjoys a tucked away position on the edge of this popular development and is a manageable walk to Midsomer Norton High Street. The accommodation comprises an entrance hallway with stairs to the first floor, an extended, generous sized lounge which then leads into a kitchen/breakfast room. At the rear there is a porch/utility area with door to the rear. On the first floor there are two double bedrooms and a shower room. GCH and double glazing. For sale with no onward chain.

Externally the property has a shallow front lawn garden and at the rear there is a fully enclosed low maintenance garden laid to a combination of decking and patio. Beyond the rear gate there is a single garage located in a block.

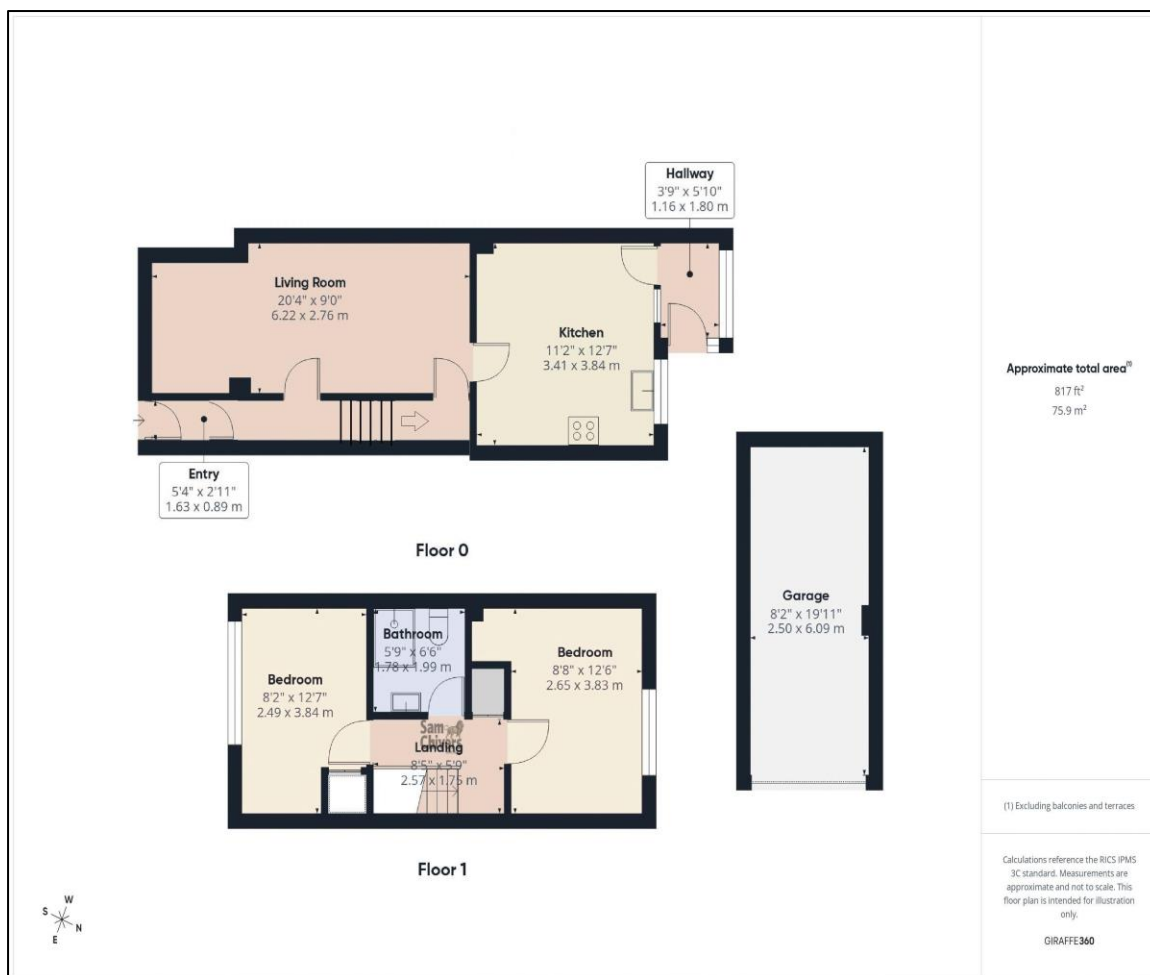
The property forms part of a development that is popular with families as it is conveniently placed for local shops, schools and public transport. As mentioned by using Midsomer Norton greenway, access to the High Street is a short distance. Bath city centre is 11 miles and Bristol city centre is 17 miles.

**Tenure:** Freehold

**Council Tax Band:** B







Find us online!



[www.samchiversproperty.co.uk](http://www.samchiversproperty.co.uk)



Facebook: Sam Chivers Estate Agents



Instagram: @samchiversestateagents

rightmove Zoopla

Score	Energy rating	Current	Potential
92+	A		
81-91	B		89 B
69-80	C	74 C	
55-68	D		
39-54	E		
21-38	F		
1-20	G		

Sam Chivers Estate Agents can also provide mortgage and conveyancing recommendations should you require such a service. Please contact our office on:

01761 411020 or email us at [sales@samchiversproperty.co.uk](mailto:sales@samchiversproperty.co.uk)

These sales particulars provide an approximate guide and form no part of a contract. It is the purchaser's responsibility to satisfy themselves that the property has been accurately described and that all fixtures and apparatus are functioning correctly. Your home may be at risk if you do not keep up repayments secured against it.