



Guide price £290,000
Southampton, SO16

Lets Rent | Lets Sell
SOUTHAMPTON



 2
Bedrooms

 1
Bathroom

15 London Road Southampton SO152AE |
enquiries@letsrentsouthampton.co.uk

02380 434448



Welcome to Hollybrook Avenue! A well-presented two-bedroom semi-detached bungalow in the ever-popular Hollybrook Avenue. Comprising lounge, kitchen/dining room, two double bedrooms and conservatory/utility room with garden access. A fantastic opportunity – early viewing highly recommended. No onward chain.

Lets Sell Southampton are proud to present to the market this charming and well-presented two-bedroom semi-detached bungalow, nestled in the highly desirable Hollybrook Avenue.

The generous lounge provides a welcoming and versatile living space, bathed in natural light and ideal for relaxing evenings at home. The kitchen/dining room is a real hub of the home – a sociable and practical space perfectly suited to everyday family life and informal entertaining alike.

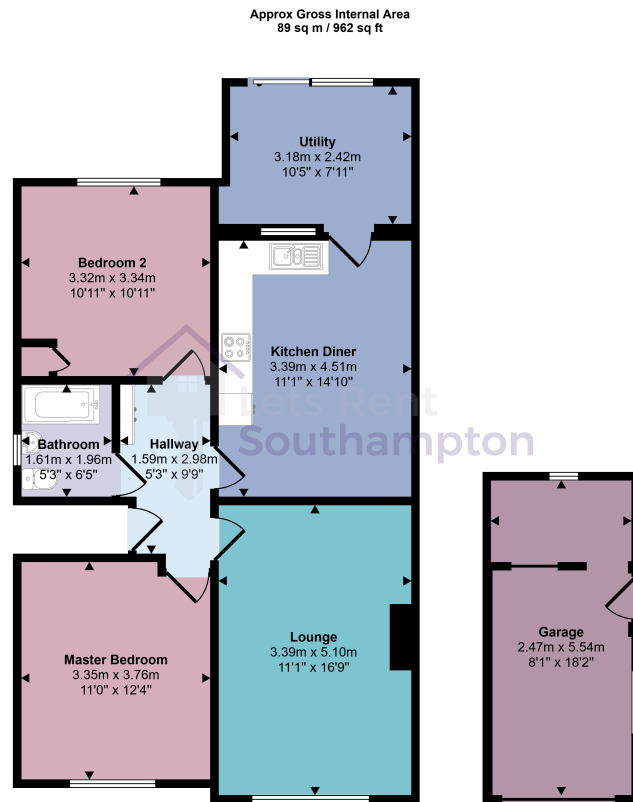
Both bedrooms are comfortably proportioned doubles, offering flexibility for a variety of buyers – whether you're downsizing without compromise, stepping onto the property ladder, or seeking a ready-to-go investment.

A light-flooded conservatory/utility room that seamlessly connects the interior of the home to the garden beyond. Step outside and you'll find a beautifully positioned, **southerly-facing rear garden** that enjoys sunshine throughout the day – an exceptional and much-coveted feature, perfect for alfresco dining, gardening enthusiasts, or simply soaking up the afternoon sun in complete privacy.

Adding further appeal is a substantial **18ft garage/workshop** – a rare and highly practical bonus that will delight hobbyists, DIY enthusiasts, or anyone in need of serious storage or a dedicated workspace.

Situated in the ever-popular Hollybrook Avenue, the property benefits from excellent access to local schools, shops, parks and transport links, placing everything you need within easy reach.

Offered to the market with **no onward chain**, this is a rare opportunity not to be missed. Early internal viewing comes very highly recommended – properties of this quality and in this location simply do not stay available for long.



This floorplan is only for illustrative purposes and is not to scale. Measurements of rooms, doors, windows, and any items are approximate and no responsibility is taken for any error, omission or mis-statement. Icons of items such as bathroom suites are representations only and may not look like the real items. Made with Made Snappy 360.

Energy Efficiency Rating		
	Current	Potential
<i>Very energy efficient - lower running costs</i>		
(92+) A		
(81-91) B		85
(69-80) C		
(55-68) D		
(39-54) E	47	
(21-38) F		
(1-20) G		
<i>Not energy efficient - higher running costs</i>		
England, Scotland & Wales		EU Directive 2002/91/EC

Address: Southampton, SO16

