



House (EPC Rating: B)

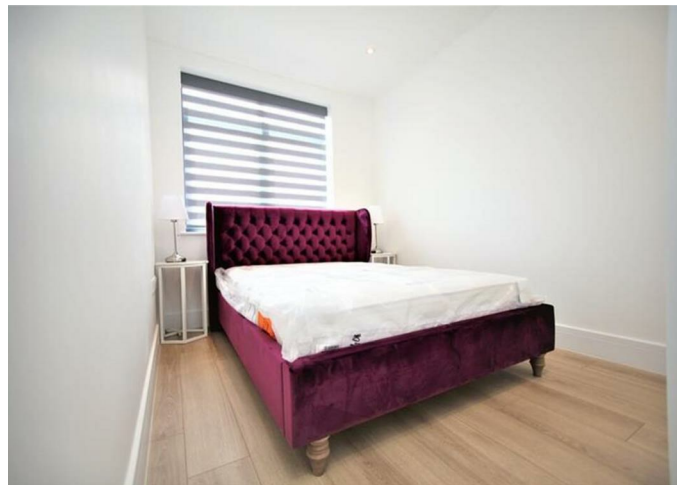
FLAT 6, 20, BRIGHTVIEW COURT FINCHLEY LANE, LONDON, NW4 1DL

Per month

£2,200

FEATURES

- 2 cosy bedrooms
- Spacious reception room
- Part Furnished
- Easy access to transport
- 1 modern bathroom
- Charming house style
- Close to local amenities
- EPC:B



WINGATE 
Estate Agents

2 Bedroom House located in London

Nestled in the charming area of Finchley Lane, London, this delightful house offers a perfect blend of comfort and convenience. Spanning an inviting 678 square feet, the property features a well-appointed reception room that serves as an ideal space for relaxation or entertaining guests.

The house boasts two spacious bedrooms, providing ample room for a small family or professionals seeking a peaceful retreat. The bathroom is thoughtfully designed, ensuring both functionality and comfort.

Finchley Lane is known for its friendly community atmosphere and excellent local amenities, making it a desirable location for those looking to enjoy the vibrant lifestyle of London while still having a tranquil home environment. With easy access to public transport and nearby parks, this property is perfectly situated for both work and leisure.

This charming house is an excellent opportunity for anyone looking to settle in a welcoming neighbourhood. Don't miss the chance to make this lovely property your new home.

Call us on

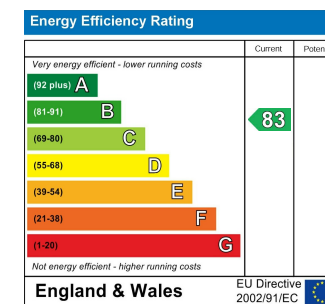
02045 310143

info@wingatestates.co.uk

<https://www.wingatestates.co.uk/>

Council Tax Band

E



Agents Note: Whilst every care has been taken to prepare these particulars, they are for guidance purposes only. All measurements are approximate and are for general guidance purposes only and whilst every care has been taken to ensure their accuracy, they should not be relied upon and potential buyers are advised to recheck the measurements.

WINGATE 
Estate Agents