



## Sion Court, Sion Road

Twickenham, TW1

£450,000

This beautifully presented two bedroom flat is set within a highly sought-after mansion block, renowned for its elegant period features and secure on-site porter service. Located on the second floor with convenient lift access, the property is offered in excellent condition throughout.

- Excellent Condition Throughout
- Beautiful Soughtafter Mansion Block with On-Site Porter
- Close to Twickenham Station & Town Centre
- No Onward Chain
- Second Floor with Lift Access
- Close to Orleans Park School
- Heating and Water Included in Service Charge
- Residents Parking
- Modern Fitted Kitchen
- Two Double Bedrooms



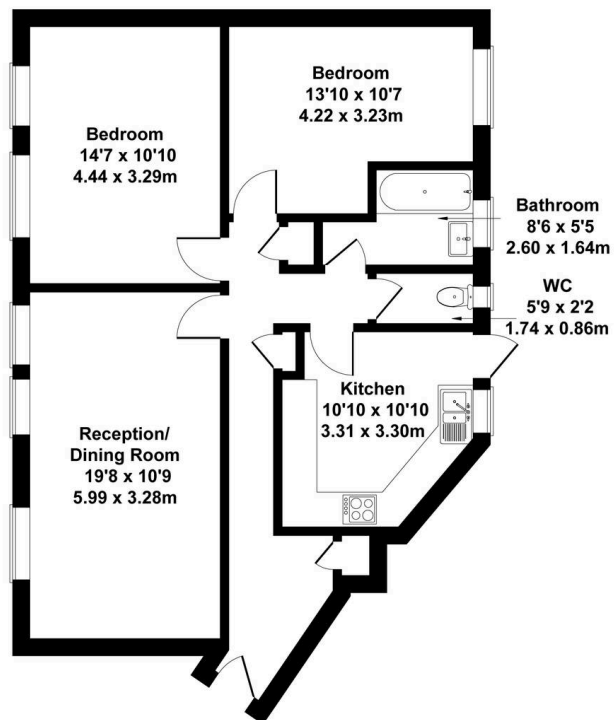
SCAN HERE  
FOR  
PROPERTY  
DETAILS



OAKHILL

## Sion Court, TW1 3DD

Approximate Gross Internal Area  
818 sq ft - 76 sq m



### SECOND FLOOR

This floorplan is for guidance only and does not form part of an offer or contract.  
Buyers or tenants should verify all details through inspection, searches, and surveys.  
Measurements are approximate and should not be relied upon for valuation or transactions.  
Produced by Plan Portal.  
[www.evolveLondon.co.uk](http://www.evolveLondon.co.uk)