



ALISTAIR SAVILLE  
Estate Agents

## Liverpool Road, Lydiate

Fixed Price £240,000

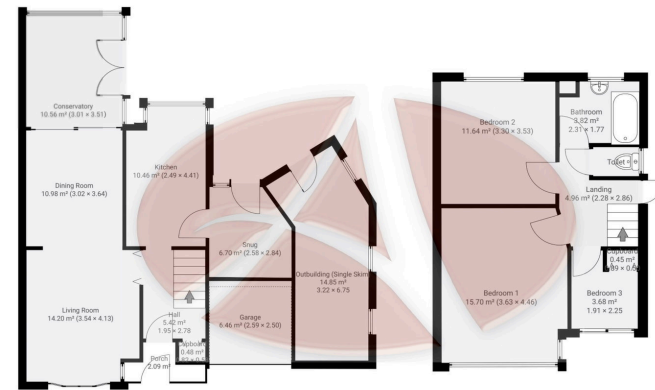
🛏 3 🚿 1 🚗 3

- Three Bedroom Semi Detached Property
- Available With No Chain
- Conservatory
- Outdoor Building With Kitchen
- Freehold
- In Need Of Modernisation
- Sun Roof Terrace
- Snug Area
- Brick Paved Drive With Parking
- EPC Rating -E, Council Tax Band - C



Discover this three bedroom semi detached home in Lydiate, offering a spacious lounge, dining room, conservatory, and an impressive roof terrace with views of the public lawn and bowling green. In need of modernisation, this property also features a single garage, driveway, and an established rear garden with an outbuilding housing a kitchen and a separate WC.





Ground Floor area 82.16m<sup>2</sup>

1st Floor area 41.49m<sup>2</sup>

116 Liverpool Road, L31 2NB

Whilst every effort is made to accurately reproduce these floor plans, measurements are approximate, not to scale and for illustrative purposes only. Measurements, floor-areas, openings and orientations are approximate. They should purpose and do not form any part of an agreement. No liability is taken for any error or mis-statement. All parties must rely on their own inspections.

