

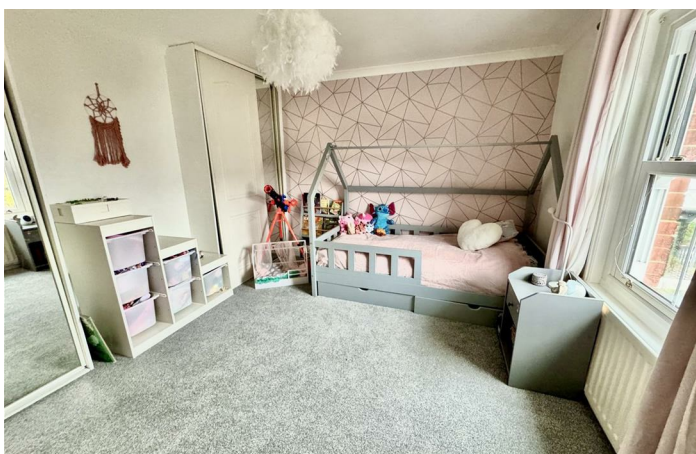


Drummond Road
, Hythe, Hampshire SO45 6BE

- DETACHED HOUSE
- 2 BATHROOMS
- PRIVATE GARDEN
 - FIREPLACE
- COSY LIVING ROOM
- 5 BEDROOMS
- OFF-ROAD PARKING
 - SHED
- SHORT WALK TO SHOPS
- OPEN PLAN KITCHEN

Offers in excess of £649,999 Freehold





Location

ENTRANCE HALL

Upon entering, an inviting and open entrance hall leads the way to the heart of the property, providing easy access to a spacious kitchen, a welcoming lounge and a well-proportioned dining room perfect for entertaining guests.

KITCHEN/DINING AREA

The charming kitchen includes a large window facing the garden as well as glass doors. With the open plan dining area, the large floor to ceiling window provides an abundance of natural light. A stone brick fireplace separates the dining area to a sitting room.

LIVING ROOM

The spacious living room has a charming fireplace, creating a cosy focal point, while a generous window bathes the space in natural light and provides tranquil views of the surroundings.

EN SUITE

The downstairs bathroom includes a large shower, sink and toilet conveniently placed by the kitchen and downstairs bedroom.

This modern and stylish room also consists of a laundry area inside large cupboards to keep it tidy, handy and out of sight.

BEDROOM FIVE/MASTER BEDROOM

The downstairs bedroom is comfortably placed by the ground floor bathroom and has large glass sliding doors leading directly out to the garden. This could easily be transform into a master en-suite room.

SITTING ROOM

At the front of the house is a pleasant sitting room with room for storage and plenty of natural light.

BEDROOMS 1, 2, 3 & 4

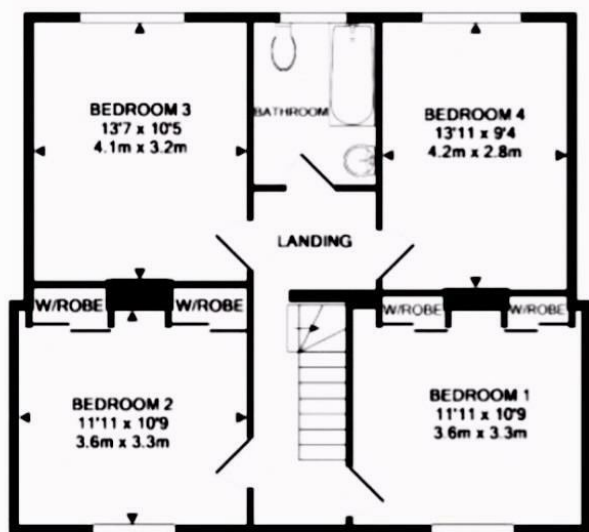
All four bedrooms upstairs have room for a double bed, each with a large window and a bathroom close by.

BATHROOM

The upstairs bathroom is well placed in between the four bedrooms. It includes a bath and a toilet and sink, with a sizable window for light and fresh air.

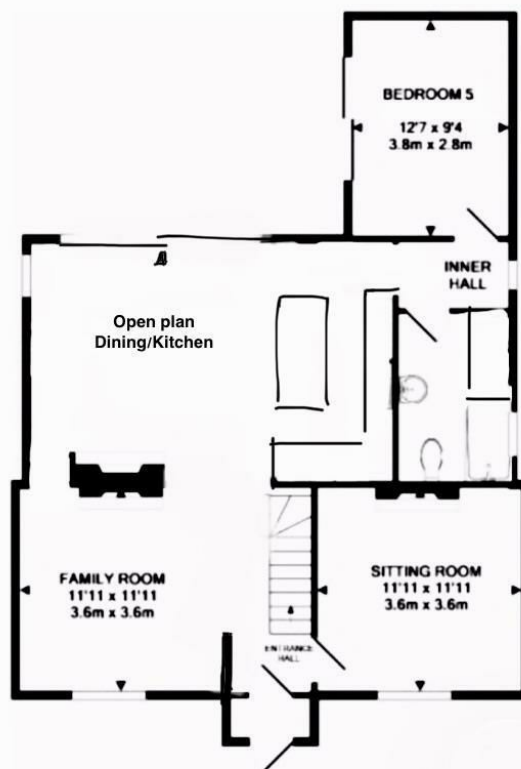


Local Authority **NFCD**
Council Tax Band **E**
EPC Rating **D**



1ST FLOOR

Whilst every attempt has been made to ensure the accuracy of the floor plan contained here, measurements of doors, windows, rooms and any other items are approximate and no responsibility is taken for any error, omission, or mis-statement. This plan is for illustrative purposes only and should be used as such by any prospective purchaser. The services, systems and appliances shown have not been tested and no guarantee



GROUND FLOOR

Citrine Estates Office

7 High Street, Hythe, Southampton,
SO45 6AG

Contact

023 81980 023
christina@citrine-estates.co.uk
www.citrine-estates.co.uk

Agents Note: Whilst every care has been taken to prepare these particulars, they are for guidance purposes only. All measurements are approximate and for general guidance purposes only and whilst every care has been taken to ensure accuracy, they should not be relied upon and potential buyers/tenants are advised to recheck the measurements.