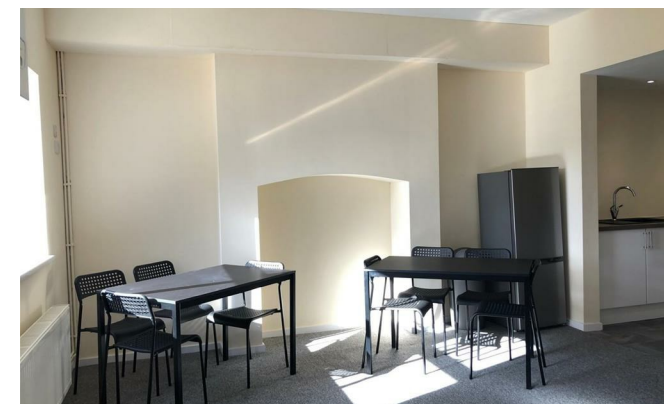
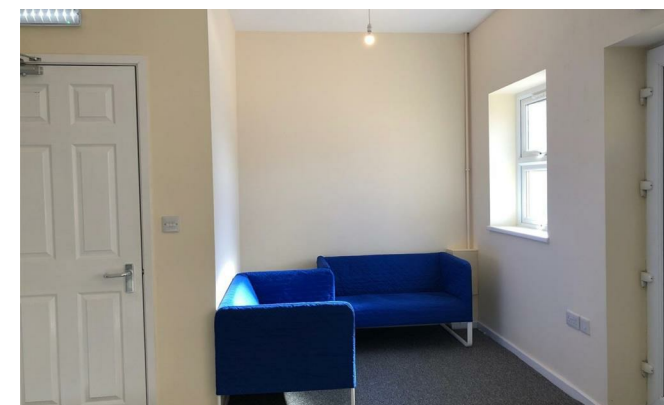


# STUART EDWARDS



## Front Street

Framwellgate Moor, Durham DH1 5EE

- 1 ROOM LEFT FROM 1ST OCTOBER 2026
- £125 PER ROOM PER WEEK INCLUSIVE OF UTILITIES
- Secure Parking
- Recently Refurbished
- Lounge/Kitchen/Diner
- 4 En-Suite Rooms
- Fully Furnished
- 2 Miles From Durham City

**£125 Per Week**

**Council Tax Band: Exempt**  
**EPC Rating:**

**FULL DESCRIPTION**

1 ROOM LEFT! ROOM 2 AVAILABLE FROM 1ST OCTOBER 2026.

£125 PER ROOM PER WEEK INCLUSIVE OF UTILITIES

Gas central heating, UPVC Double glazing and new fixtures, fittings and furnishings throughout including high speed internet in every room. Situated within 2 miles of Durham City Centre and just a 7 minute walk from Durham New College.

The living accommodation comprises: Entrance hallway, cloakroom w.c, open plan lounge, fully equipped kitchen and dining room, Bedroom 1 with en-suite shower room.

To the first floor: Landing, 5 bedrooms, 2 with shared en-suite and separate shower room.

To the second floor: Landing and a further 2 bedrooms, both having en-suite shower rooms.

Externally secure off road parking is provided.

**GROUND FLOOR**

**HALLWAY**

**CLOAKROOM/WC**

**BEDROOM 1**

**EN-SUITE SHOWER ROOM**

**COMMUNAL LOUNGE/KITCHEN/DINER**

**FIRST FLOOR LANDING**

**BEDROOM 2**

**BEDROOM 3**

**BEDROOM 4**

**BEDROOM 5**

**BEDROOM 6**

**SHARED EN-SUITE BATHROOM**

**SHOWER ROOM**

**SECOND FLOOR LANDING**

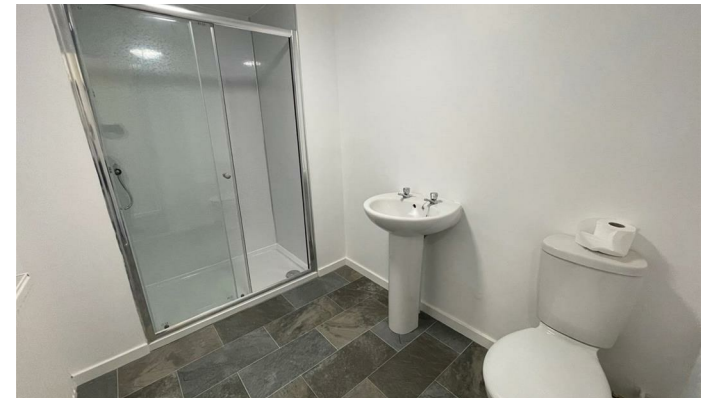
**EN SUITE SHOWER ROOM**

**BEDROOM 7**

**ROOM 8**

**EN SUITE SHOWER ROOM**

**OFF ROAD PARKING**



1 & 2 Blue Coat Buildings, Claypath,  
Durham, County Durham, DH1 1RF

0191 3848440  
enquiries@stuartedwards.com  
www.stuartedwards.com

Agents Note: Whilst every care has been taken to prepare these particulars, they are for guidance purposes only. All measurements are approximate and for general guidance purposes only and whilst every care has been taken to ensure accuracy, they should not be relied upon and potential buyers/tenants are advised to recheck the measurements.