



Lancashire Court, W1S

£6,695 Per calendar month

**Dexters**



## Lancashire Court, W1S

Impeccably presented, two bedroom triplex apartment, featuring a large open plan living space and terrace within a beautifully converted period property. Located between Brook Street and prestigious New Bond Street.

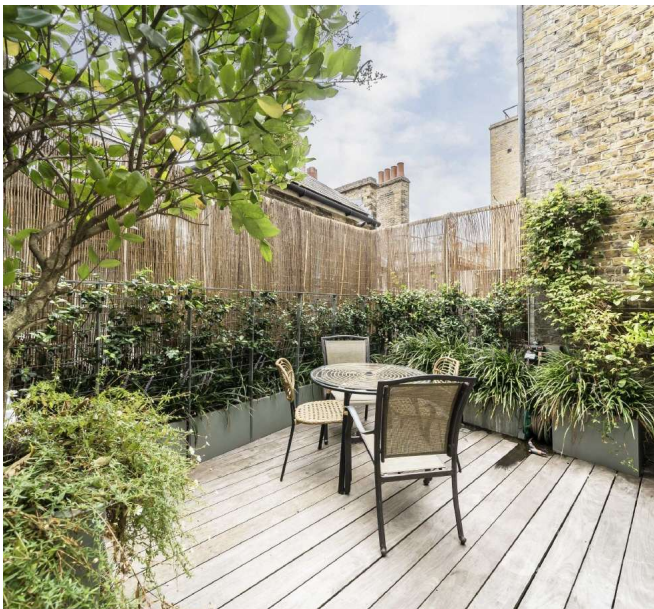
The residence boasts a spacious reception area, contemporary kitchen and a bright sun room dining area leading to a south west facing decked roof terrace.

The property comprises of two generously sized double bedrooms, each with its own modern en-suite bathroom.

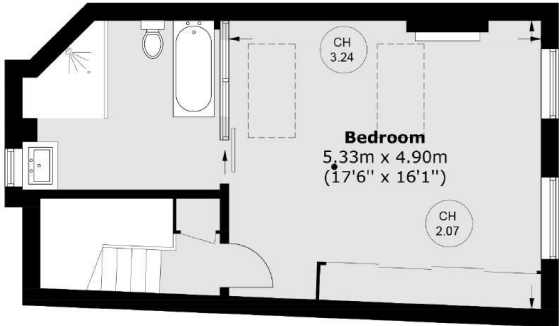
Lancashire Court is situated on a quiet pedestrianised street just off Brook Street. The property is close to both Oxford Street and the open spaces of Grosvenor Square and is well located for a number of nearby cafes, restaurants and shops.

### Features

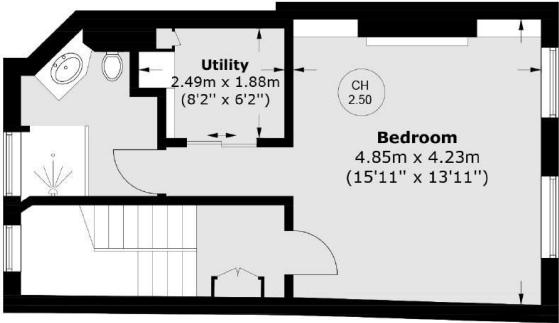
- Two Bedrooms
- Two En-Suite Bathrooms
- Terrace
- Wooden Flooring
- Air Conditioning
- Excellent Location



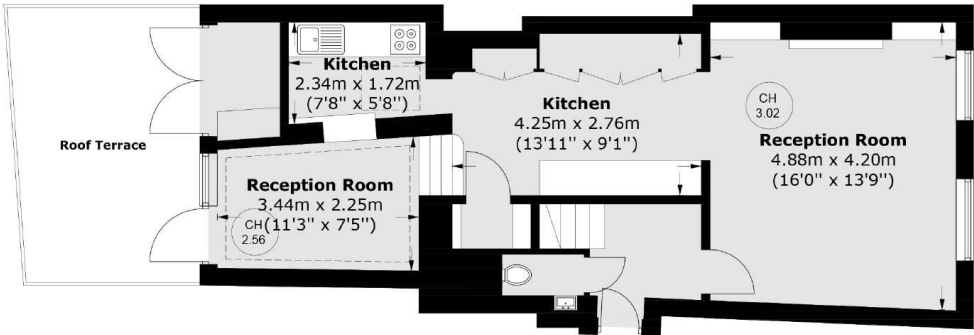
# Lancashire Court, London, W1S



**Third Floor**



**Second Floor**



**First Floor**

Total area (approx.): 139.4 sq. m (1,500.5 sq. ft)  
 Roof Terrace : 14.7 sq. m (158.2 sq. ft)



Wetherell  
 102 Mount Street  
 London  
 W1K 2TH  
 Lettings  
 020 7529 5588

Energy Rating: C. We aim to make our particulars both accurate and reliable. However they are not guaranteed; nor do they form part of an offer or contract. If you require clarification on any points then please contact us, especially if you're traveling some distance to view. Please note that appliances and heating systems have not been tested and therefore no warranties can be given as to their good working order.



dexters.co.uk