

These particulars have been prepared as accurately and as reliably as possible, but should not be relied upon as 'statement of fact', if there is any point which is of particular importance to you, please contact the office and we would be pleased to check the information. We have not tested any services, appliances, equipment or facilities and nothing in these particulars should be deemed to be a statement that they are in good working order, or that the property is in good structural condition or otherwise. Any statements contained in these particulars, floor plans or distances referred to are given only and are not precise. Purchasers must satisfy themselves by inspection or by otherwise regarding the items mentioned above and as to the correctness of each of the areas, measurements, floor plans or distances referred to in these particulars. No person in the employment of Ashtons has any authority to make or give any representation or warranty whatsoever in relation to this property or these particulars nor enter into any contract relating to the property on behalf of the vendor. Please note that some images may have been edited with the use of AI. We are legally required to carry out AML checks for all purchasers, sellers and giftors, which become mandatory once an offer has been accepted. There is a non-refundable fee of £30 + VAT per purchaser and per giftor for these checks.

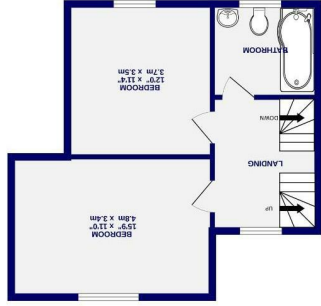
- Immaculately Presented Turkey Townhouse
- Three Double Bedrooms
- High Quality Throughout
- Shaker-Style Kitchen With Granite Worktops
- Integrated Kitchen Appliances
- Top Floor Principal Bedroom With En-Suite
- Fitted Sharps Wardrobes
- Enclosed Low-Maintenance Garden
- Ample Off-Street Parking
- EPC B

Freehold
Council Tax Band - D

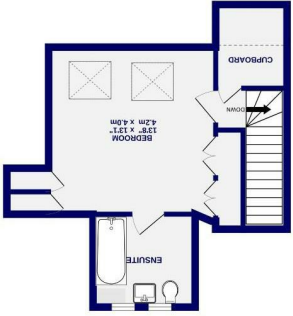
Beech Avenue Bishopthorpe, York YO23 2RL



GROUND FLOOR
460 sq ft (42.7 sq m) approx.



1ST FLOOR
469 sq ft (42.8 sq m) approx.



2ND FLOOR
342 sq ft (31.7 sq m) approx.

While every attempt has been made to ensure the accuracy of the floorplan, measurements of rooms and any other areas are approximate. It is advised to take the measurements on site and the overall floor area and no responsibility is taken for any error, omission or misstatement. This plan is for illustrative purposes only and should be used as a guide only. Any purchaser must satisfy themselves by inspection or by otherwise regarding the items mentioned above and as to the correctness of each of the areas, measurements, floor plans or distances referred to in these particulars. No person in the employment of Ashtons has any authority to make or give any representation or warranty whatsoever in relation to this property or these particulars nor enter into any contract relating to the property on behalf of the vendor. Please note that some images may have been edited with the use of AI. We are legally required to carry out AML checks for all purchasers, sellers and giftors, which become mandatory once an offer has been accepted. There is a non-refundable fee of £30 + VAT per purchaser and per giftor for these checks.

TOTAL FLOOR AREA: 1260 sq ft (117.1 sq m) approx.

Beech Avenue
Bishopthorpe, York
YO23 2RL

£425,000



Ashtons Estate Agents are delighted to offer to the market this immaculately presented, turnkey three-bedroom mid townhouse, situated in the highly sought-after village of Bishopthorpe. Ideally located close to local shops, popular amenities, and offering easy access to the A64, this stylish home has been finished to an exceptional standard throughout.

The accommodation briefly comprises a welcoming entrance hall leading to a spacious lounge/dining room, with French doors opening onto the enclosed, low-maintenance rear courtyard garden. The high-quality shaker-style kitchen features a range of wall and base units, granite worktops, and integrated oven, hob and extractor fan. A ground floor WC completes the accommodation on this level.

A striking glass and oak staircase leads to the first floor, where there are two generous double bedrooms and a sleek, contemporary family bathroom with a shower over the bath. Occupying the entire second floor is the impressive principal bedroom, complete with fitted Sharps wardrobes and a stylish en-suite bathroom, finished to the same exacting standard as the rest of the property.

The home also benefits from excellent built-in storage, including under-stairs storage and a substantial storage area on the second floor.

Externally, there is ample off-street parking to the front, while the enclosed rear garden provides a low-maintenance outdoor space, ideal for both entertaining and relaxing, and benefits from a useful garden shed.

An internal viewing is highly recommended to fully appreciate the quality of finish and accommodation on offer.

* Please note a selection of rooms have been dressed using AI for illustrative purposes.*

