



SARAH CLARK
PROPERTY CONSULTANTS

75A |
SEA MILLS LANE, BRISTOL, BS9 1DR

Available from 19th August, this beautifully presented four-bedroom detached home offers over 1,750 sq ft of stylish and versatile accommodation in the highly sought-after area of Stoke Bishop. With generous living space, a private enclosed garden and excellent access to local amenities, it is ideally suited to families and professionals seeking a high-quality long-term home.

A welcoming entrance hall leads to a bright dual-aspect sitting room, while the heart of the home is the spacious, fully equipped, open-plan kitchen and dining room, perfect for everyday living and entertaining. Double doors open into a light-filled conservatory overlooking the garden, complemented by a separate utility room and ground floor cloakroom.

Upstairs are four well-proportioned bedrooms, including a generous principal bedroom with fitted wardrobes, together with a contemporary family bathroom and separate shower room.

Outside, the enclosed rear garden offers a sunny patio, level lawn and elevated decked seating area surrounded by mature trees, creating a private and peaceful space to enjoy throughout the year. To the front is ample dedicated off-street parking.



Features

- Beautifully presented detached family home
- Spacious dual-aspect sitting room
- Open-plan kitchen/dining room
- Bright conservatory overlooking the garden
- Family bathroom plus separate shower room
- Enclosed rear garden with patio, lawn and raised deck
- Off-street parking for numerous cars

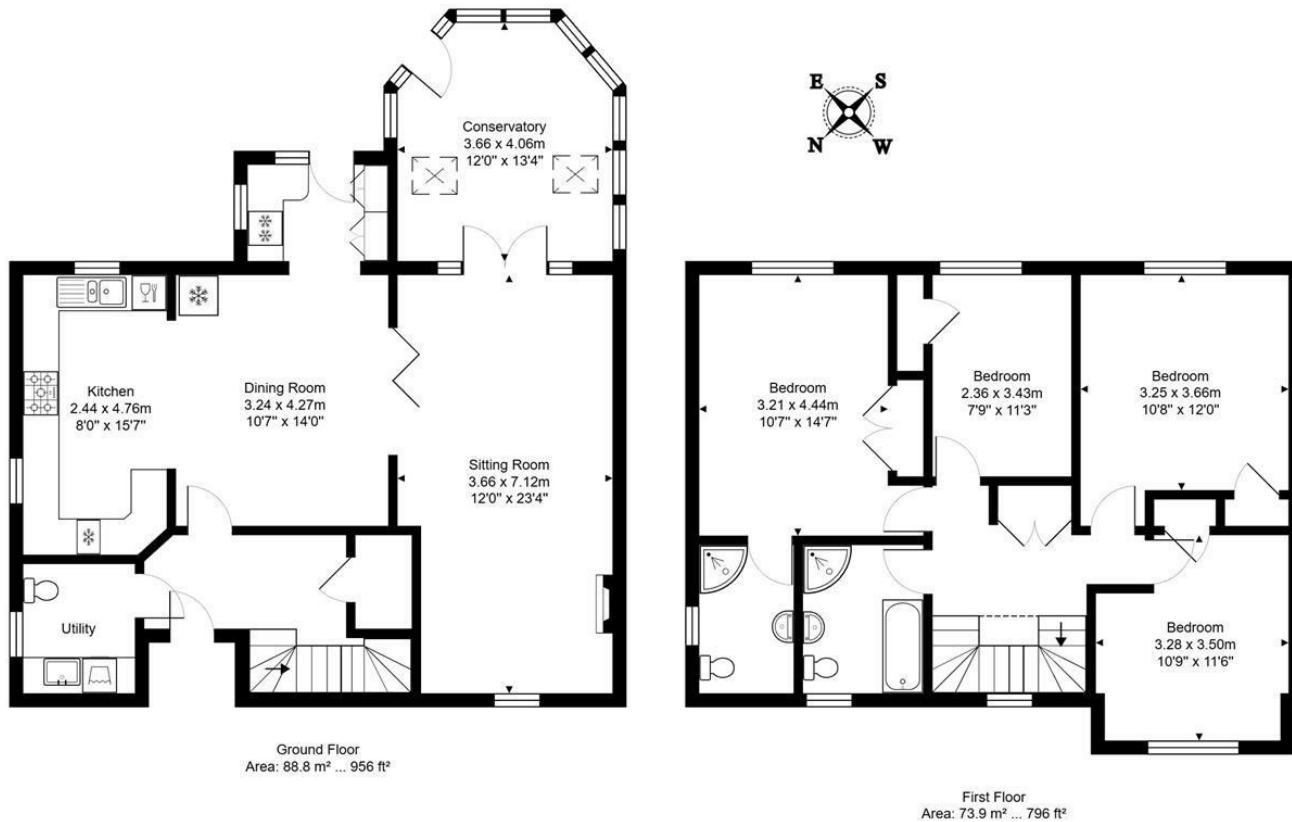




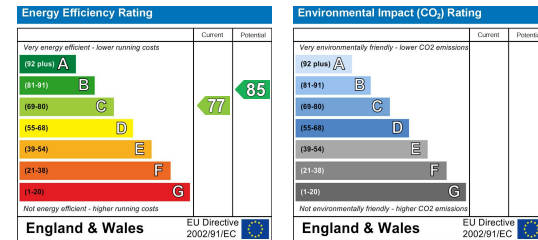
Customise to type text here

Customise to type text here

Sea Mills



All measurements of walls, doors, windows, fittings and appliances, their size and locations are approximate and cannot be regarded as being an accurate representation neither by the vendor nor their agent.
www.inovusproperty.co.uk



IMPORTANT: we would like to inform prospective purchasers that these sales particulars have been prepared as a general guide only. A detailed survey has not been carried out, nor the services, appliances and fittings tested. Room sizes should not be relied upon for furnishing purposes and are approximate. If floor plans are included, they are for guidance only and illustration purposes only and may not be to scale. If there are any important matters likely to affect your decision to buy, please contact us before viewing the property.