



Primrose Lodge

+44 (0) 1223 508050

[Lettings@cookecurtis.co.uk](mailto:Lettings@cookecurtis.co.uk)

[www.cookecurtis.co.uk](http://www.cookecurtis.co.uk)

A smart, studio flat in a purpose built block just off of Victoria Road. Available for single occupancy for a full time student only\* Inclusive of utilities. With convenient access to Cambridge City Centre as well as both Cambridge train stations. See description for conditions.

£1,200 pcm

Primrose Lodge, Cambridge  
CB4 3EH



This flat is available to a single occupant who must be a full-time student at one of the universities in Cambridge, including ARU.

Primrose Street is a quiet road just off of Victoria Road. Primrose Lodge is a block of 30 flats, there is a communal living area, communal garden, bike store, bin store and social room.

This particular flat is basement level but incredibly light. It's fully furnished and includes a double bed, a desk, fitted wardrobes, bedside table, chest of drawers, TV, kitchen table and four chairs, washing machine, fridge and microwave oven. There is a modern and private ensuite shower room and a small private terrace which is accessible via glass doors in the kitchen area.



Water, electricity, internet are all included in the rent and capped at £150pcm. Any additional usage is to be reimbursed to the Landlord, by the Tenant.

Available 19 January 2026. Student only

Please refer to the 'Tenant Guide' brochure, for more information regarding the tenancy application process, referencing, terms and conditions of the holding fee and payments due before the start of the tenancy.

Uk power networks suggest the electricity is currently supplied by:  
Octopus energy  
Ofcom suggests the maximum broadband speed is: 1000mbps





24sqm / 260sqft

---

1 bed, 1 bath, 0 recep

---

EPC - B / 81

---

Council tax band - A

---

Electric heating

---

Permit on road parking

---

Furnished

---

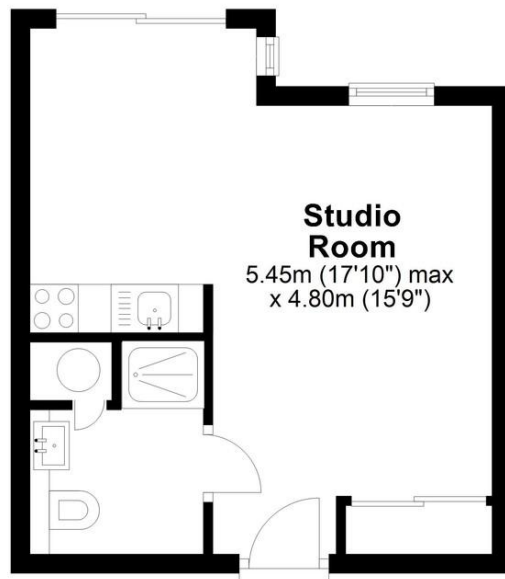
Available January 2026

---

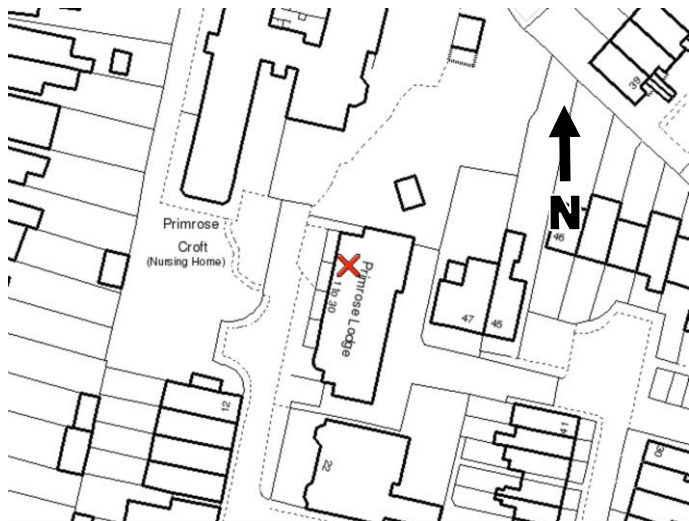


## Ground Floor

Approx. 24.2 sq. metres (260.3 sq. feet)



Total area: approx. 24.2 sq. metres (260.3 sq. feet)



Victoria Road is a pleasant road within easy reach of the City centre. With many local amenities, various shops and supermarkets only a stone's throw away including the two Michelin starred Midsummer House restaurant. Castle Hill's restaurants and public houses are about half a mile away, Magdalene Street and the bustling historic City centre full of boutique shops and eateries are only around a mile away. There are a variety of cycle and bus routes on the road itself, including links to Cambridge Railway Station and the newly opened Cambridge North Station, Science Park and Biomedical Campus. Access out to the M11 and A14 is very straightforward along neighbouring Huntingdon Road or Histon Road and The University of Cambridge and Anglia Ruskin University sites are only around a mile away.

COOKE  
CURTIS  
& CO