



## Chiswick High Road, W4

£576 Per calendar month

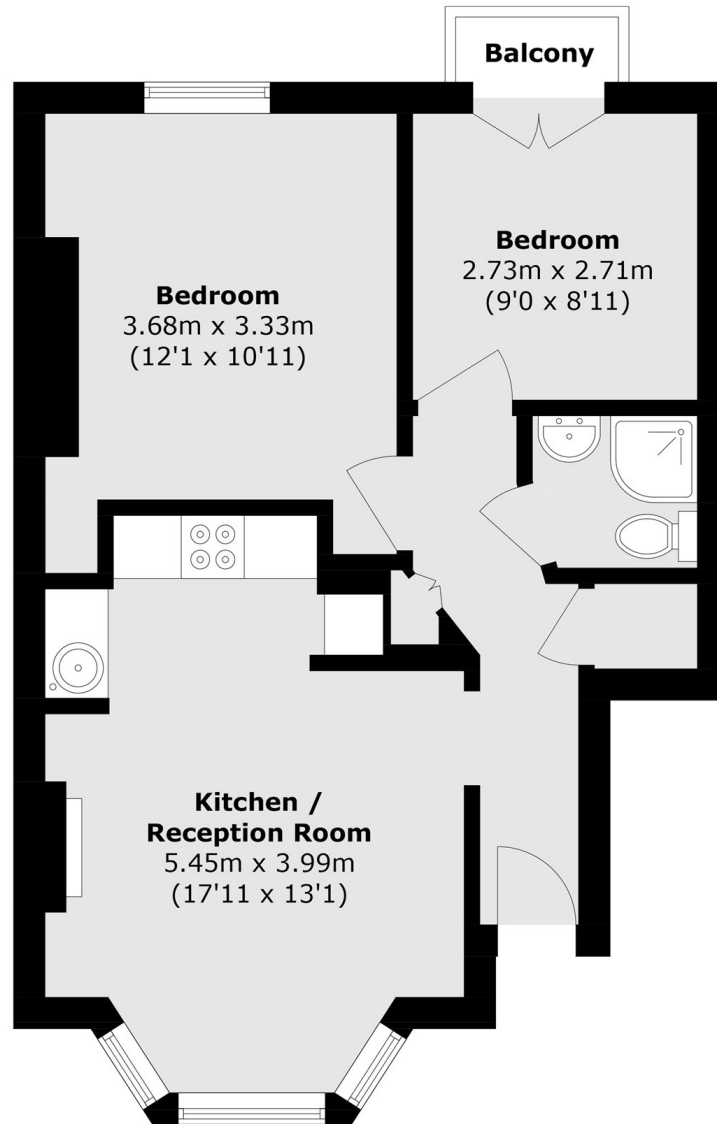
An immaculately presented and recently modernised raised ground-floor two-bedroom period conversion. Situated in a central location with great transport links, a private balcony and communal garden.

Situated within close proximity to the historic Strand-on-the-Green, Kew Bridge station, numerous bus routes as well as the extensive bars, cafés and restaurants of Chiswick High Road.

### Features

- Two Bedrooms
- Private Balcony
- Communal Garden
- Close To Transport
- Modernised Flat
- Raised Ground Floor

Chiswick High Road,  
London, W4



Total area (approx.): 49.9 sq. m (537.1 sq. ft)

Balcony area (approx.): 0.9 sq. m (9.6 sq. ft)