



546 Bristol Road Birmingham, B29 6BD

2026-2027
£1700pcm
£392.30pw
£78.46 PPPW

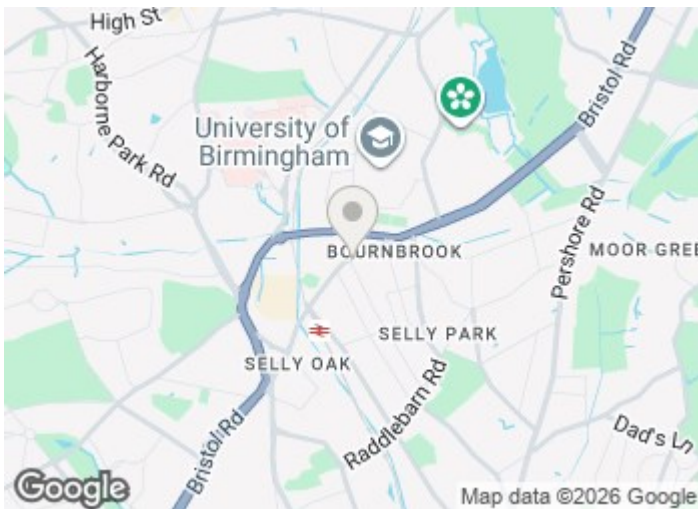
This duplex apartment offers 5 double bedrooms, a kitchen/lounge area with appliances and has new carpets throughout. Two shower rooms and a utility room. EXCELLENT LOCATION just 5 mins walk to University.

Term - 12 months.
Deposit - £392.2 pp
Council Tax Band - A (students exempt)
EPC rating E.

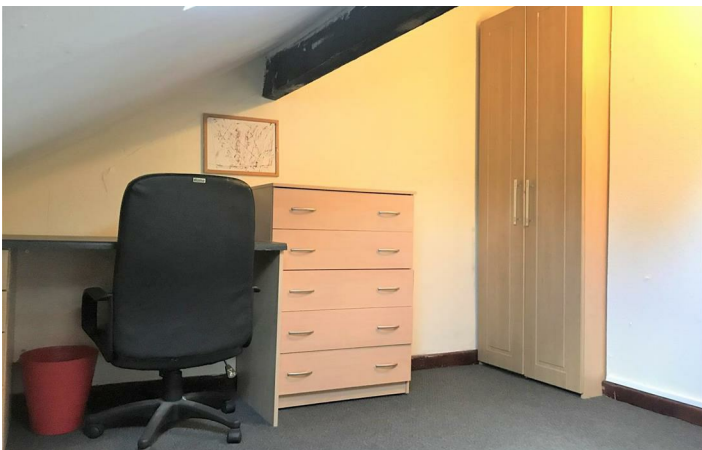
£1,700 Per Month

546 Bristol Road

Birmingham, B29 6BD

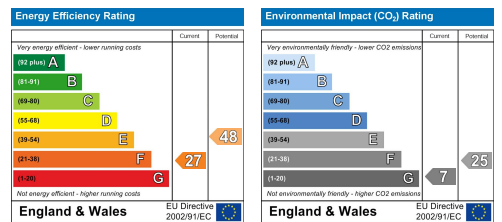


[Directions](#)



Floor Plan

These particulars, whilst believed to be accurate are set out as a general outline only for guidance and do not constitute any part of an offer or contract. Intending purchasers should not rely on them as statements of representation of fact, but must satisfy themselves by inspection or otherwise as to their accuracy. No person in this firm's employment has the authority to make or give any representation or warranty in respect of the property.



543 Bristol Road, Selly Oak, Birmingham B29 6AU. T: 0121 472 3331 Website: www.direct-housing.co.uk
 E-mail: sellyoak@direct-housing.co.uk lettings@direct-housing.co.uk accounts@direct-housing.co.uk

