



## Pleshey Road, N7

£2,750 Per week

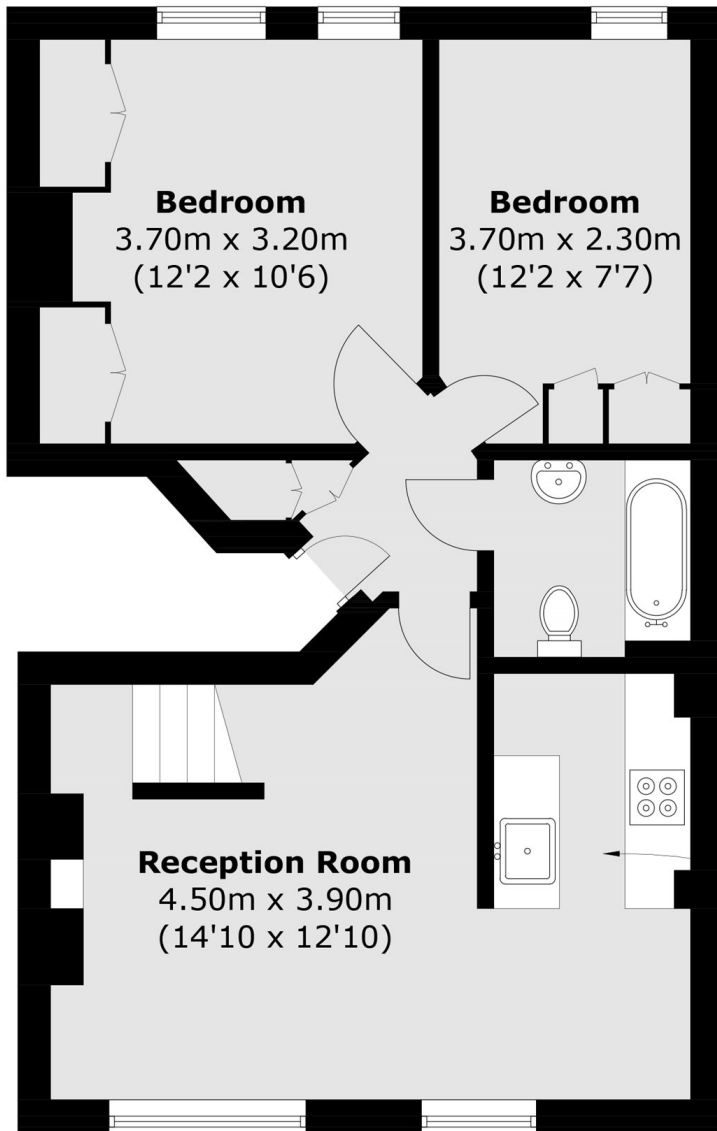
A two-bedroom split-level apartment, occupying the upper floors of a Victorian house conversion. A naturally lit open-plan reception room with impressive ceiling heights, modern kitchen, two bedrooms and versatile loft area. Further benefits include a private south-facing roof terrace.

Pleshey Road is a desirable and convenient location offering excellent access to all local amenities including the shopping and fashionable eateries of Kentish Town and Tufnell Park.

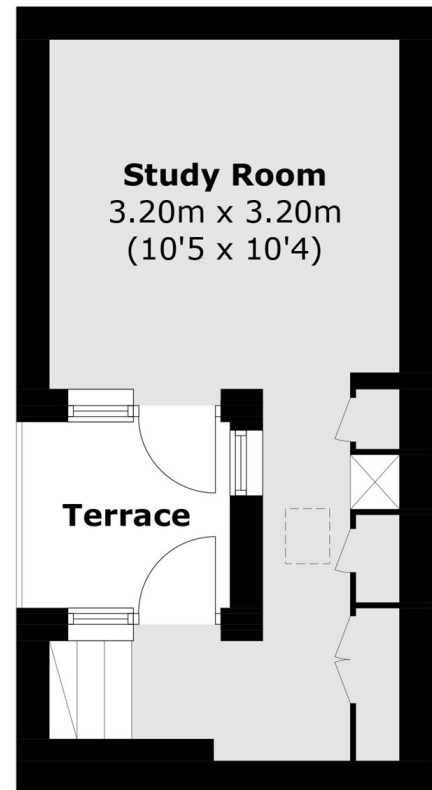
### Features

- Top Floor
- Two Bedroom
- Versatile Loft Room
- Secluded Terrace
- Period Conversion
- Close to Amenities

Pleshey Road,  
London, N7



**Second Floor**



**Third Floor**

Total area (approx.): 68.0 sq. m (732.0 sq. ft)  
Terrace: 3.2 sq. m (34.4 sq. ft)