



Flat 111 Osborne Road,, Aylesdene Court, Earlsdon - CV5 6SB

In Excess of **£135,000**

Williams.
Estate Agents



Flat 111 Osborne Road,

Aylesdene Court, Coventry

Ground floor retirement apartment in Earlsdon with stunning lounge/diner, impressive kitchen, beautiful shower room, 2 bedrooms, communal garden, warden control, private parking, and no chain - book a viewing today for stress-free living in Earlsdon!

Council Tax band: B

Tenure: Leasehold

EPC Energy Efficiency Rating: E

EPC Environmental Impact Rating: F

- Absolutely Beautiful Ground Floor Retirement Apartment
- Set In The Heart Of Earlsdon
- Stunning Lounge / Diner
- Outstanding Kitchen
- Beautiful Shower Room
- 2 Bedrooms
- Delightful Communal Garden
- Warden Controlled
- Private Parking
- EPC TBC & No Chain



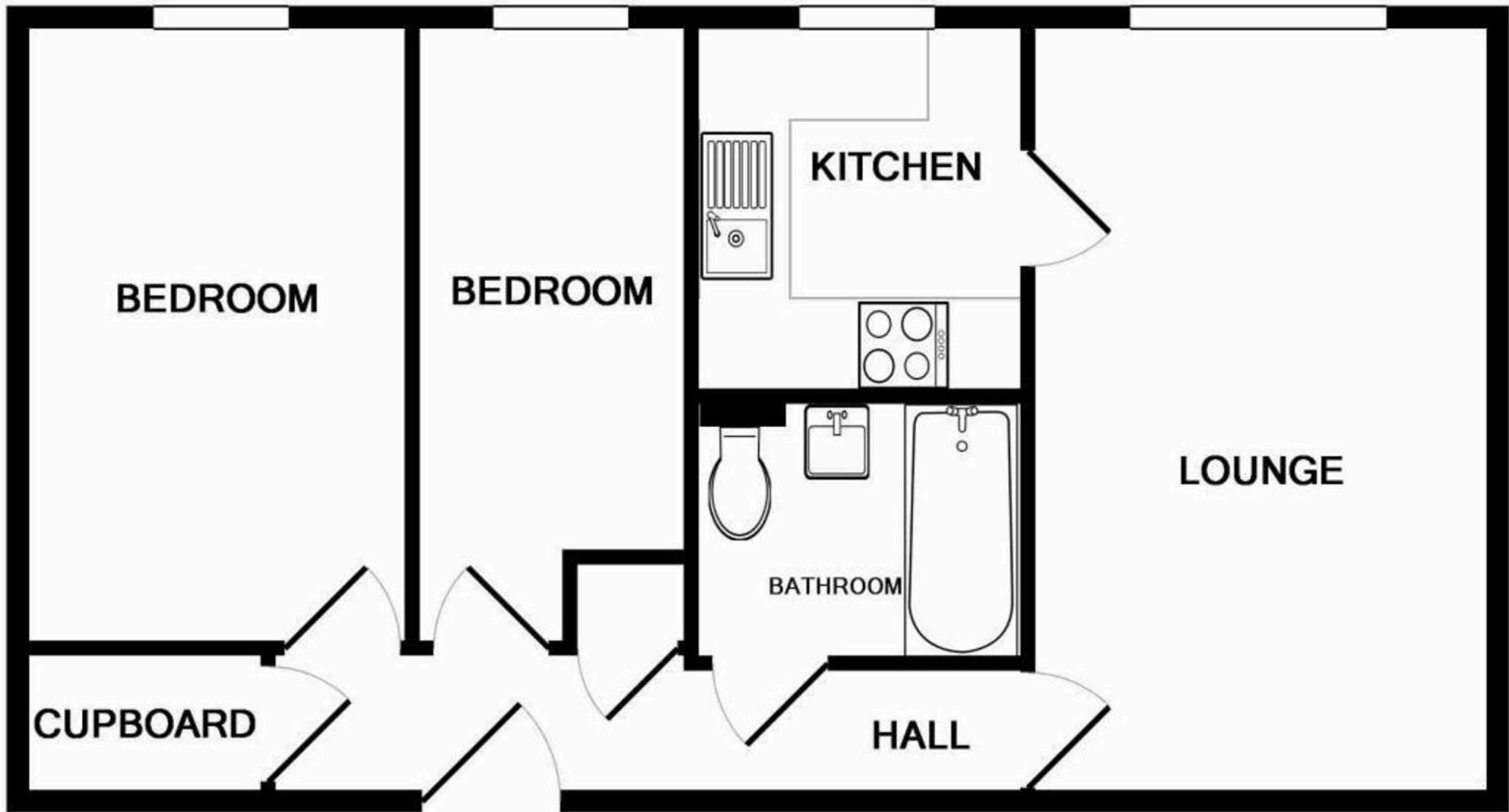
Contact us:

sales@williamsandshakespeare.co.uk

024 76 011 400

65 Earlsdon Street
Earlsdon
Coventry
CV5 6EL





TOTAL APPROX FLOOR AREA 542 SQ FT (50.3 SQ M)
Made with Metropix ©2017