



## Newman Street, W1T

£692 Per week

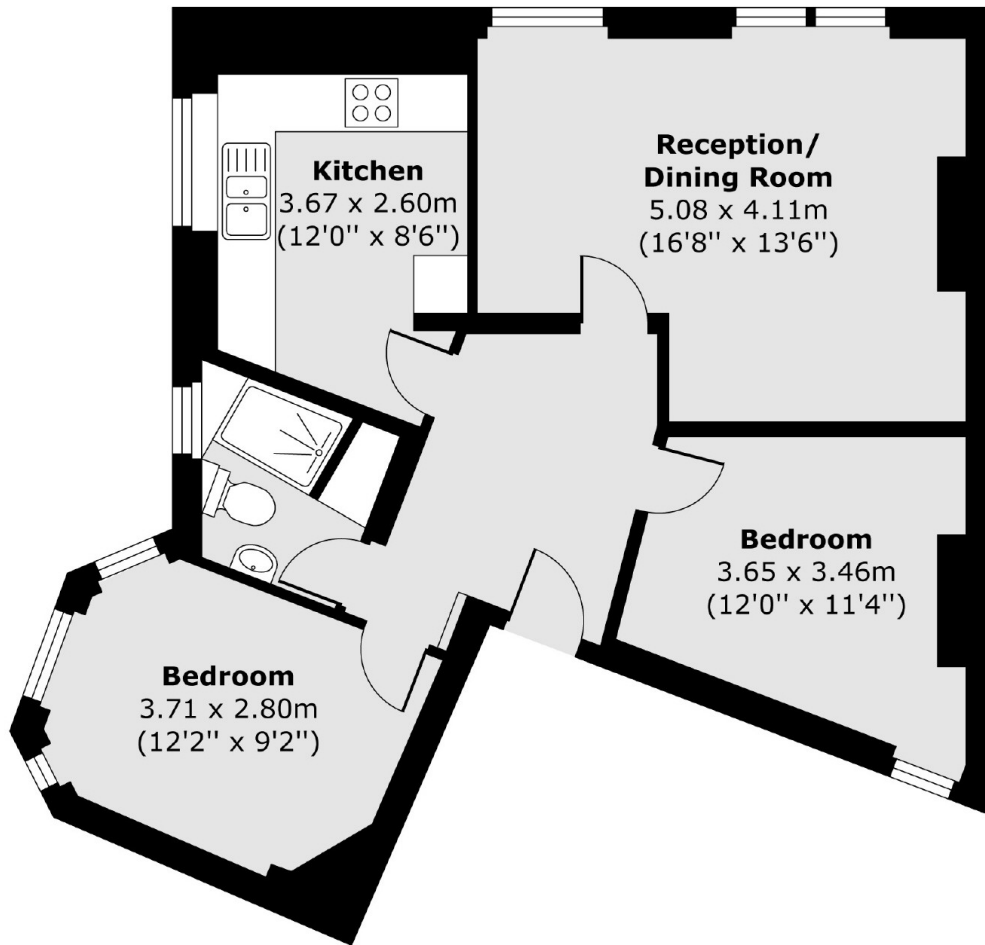
This centrally located two double bedroom apartment has wooden floors throughout the property. The apartment is exceptionally bright and spacious with ample storage space. The building also offers secure entry and lift access.

Newman Street runs north of Oxford Street and up to Goodge Street, making it an ideal location for those who want to be right in the heart of it West End.

### Features

- Two Double Bedroom
- Central Location
- Lift Access
- Second Floor
- Spacious
- Bright

# Newman Street, London, W1T



Total area (approx.) 61.15 sq. m (658 sq. ft)