



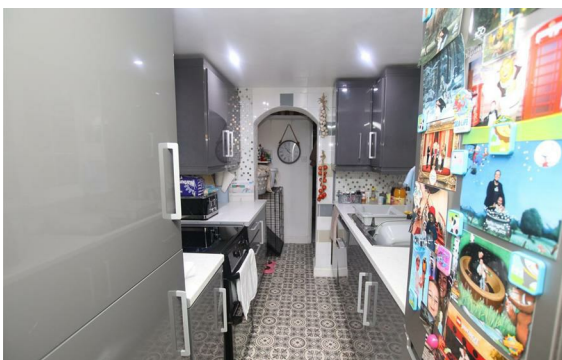
2 Bedrooms
House - Terraced
Located
in Swanscombe
£280,000



dartford@livermores.co.uk

www.livermores.co.uk

01322 228090



GUIDE PRICE £280,000 to £300,000 This mid-terrace home presents an excellent opportunity for first-time buyers seeking a property in great condition. The house boasts two spacious double bedrooms, and a first-floor bathroom. The the ground floor, there is a through reception room kitchen and very handy utility room, which adds practicality to the home, making laundry and storage a breeze. Externally there is a 25ft rear garden, which overlooks parkland. Located in a popular residential road ideally situated close to Craylands Primary School. VIEWING HIGHLY RECOMMENDED

Energy Efficiency Rating: C

Agents Note: Whilst every care has been taken to prepare these particulars, they are for guidance purposes only. All measurements are approximate and are for general guidance purposes only and whilst every care has been taken to ensure their accuracy, they should not be relied upon and potential buyers/tenants are advised to recheck the measurements.

LIVERMORES
THE ESTATE AGENTS

1 Hythe Street
Dartford
Kent
DA1 1BE

01322 228090

dartford@livermores.co.uk

www.livermores.co.uk